

GLOBUS SRL

Viale G. Fauser, 3 | 28066 Galliate (NO) - ITALY
P: +39 0321 862702 | F: +39 0321 866060 | info@globussrl.it
www.imalpai.com

SEPT 2024 **REFERENCE LIST**

THE NUMBER OF SUCCESS



DRUM CHIPPERS	79
IRON REMOVAL UNITS	414
VIBRATING MACHINES	489
RECHIPPERS	11
HEAVY PARTICLES SEPARATORS	295
CHAIN CONVEYORS	28
BELT CONVEYORS	111
KNIFE RING FLAKERS	296
DOUBLE STREAM MILLS	88
HAMMER MILLS	33
SHARPENING SYSTEMS	4
WASHING MACHINES	5
GRINDING MACHINES	5
CAM CLEANERS	4
MACHINES OPERATING WORLDWIDE	1862



MACINATORI A TAMBURO

DRUM CHIPPERS

Pos.	Cliente	Località	Paese	Anno	Codice Globus
Item	Customer	Town	Country	Year	Globus code
79	GIR D.O.O.	Kraljevo	SERBIA	2024	MTG 50.105H-10R+1
78	GRANS DEL LLUÇANÈS, S.L.	Sant Martí d'Albars	SPAIN	2024	MTG 85.145H-13R
77	PT. RIMBA PARTIKEL INDONESIA	Kendal, Central Java	INDONESIA	2023	MTG 40.105H-8R+1
76	GREENLAM	Andhra Pradesh	INDIA	2022	MTG 60.125L-10R+1
75	BAAHU PANELS (GREENPLY GROUP)	Sherpura	INDIA	2021	MTG 60.125L-10R+1
74	TABLEROS HISPANOS	Lugo	SPAIN	2021	MTG 85.125H-13R+1
73	YILDIZ ENTEGRE A.Ş.	Kartepe - Kocaeli	TURKEY	2021	MTG 105.165L-15R
72	CITADEL INTL Trading LLC	Dubai Media City	DUBAI, UAE	2020	MTG 105.145L-15R+1
71	SONAE ARAUCO PORTUGAL SA	Mangualde	PORTUGAL	2019	MTG 85.145H-13R+1
70	FICAP	Pomacle	FRANCE	2019	MTG 50.105H-10R+1
69	PT. KUTAI TIMBER INDONESIA	Probolinggo	INDONESIA	2018	MTG 50.105H-11R
68	ENDESA-BOTROSA	Quito	ECUADOR	2018	MTG 40.105H-6R+1
67	ENDESA-BOTROSA	Quito	ECUADOR	2018	MTG 40.105H-6R+1
66	THANH THANH DAT LIMITED COMPANY	Son Tho Commune	VIETNAM	2017	MTG 50.105H-10R+1
65	BORG MANUFACTURING Pty Ltd.	Oberon	AUSTRALIA	2017	MTG 105.165L-15R+1
64	METRO PARTICLE CO LTD	Bangkok	THAILAND	2016	MTG 35.085H-6R+1
63	HANWHA Corp./ SY ENERGY	Chungbuk	KOREA	2016	MTG 50.125H-10R+1
62	HANWHA Corp./ SY ENERGY	Chungbuk	KOREA	2016	MTG 24.055H-4R+1
61	FABRYKI MEBLI "FORTE" S.A.	Ostrow Mazowiecka	POLAND	2016	MTG 50.105H-10R+1
60	YILDIZ ENTEGRE	Kocaeli	TURKEY	2015	MTG 20.050H-2R
59	WOODRIMBIO	Chungbuk	KOREA	2015	MTG 50.105L-8R+1
58	WOOD RUBBER GROUP	Quang Tri	VIETNAM	2014	MTG 50.105L-8R+1
57	POOYA WOOD Co	Teheran	IRAN	2013	MTG 85.125H-13R+1
56	METRO PANEL CO LTD	Bangkok	THAILAND	2013	MTG 60.125L-10R+1
55	SANAYE KIMIA CHOOB GOLESTAN	Gorgan	IRAN	2012	MTG 35.085H-6R+1
54	SANAYE KIMIA CHOOB GOLESTAN	Gorgan	IRAN	2012	MTG 35.085H-6R+1
53	XDT	Montevideo	URUGUAY	2012	MTG 85.125H-13R+1
52	SAIB	Fossadello	ITALY	2011	MTG 60.145L-10R+1
51	DURATEX	Uberaba	BRASIL	2011	MTG 50.105L-6R+1
50	ABOLTINA	Madonas Novads	LATVIA	2011	MTG 40.085H-6R+1
49	ZIGNAGO POWER	Fossalta	ITALY	2010	MTG 60.105L-10R+1
48	DURATEX	Uberaba	BRASIL	2010	MTG 40.105L-6R+1
47	STAR PANEL BOARD	Malur	INDIA	2010	MTG 60.125H-13R+1
46	NOVOPAN DE EQUADOR	Itulcachi	ECUADOR	2010	MTG 40.085H-8R+1
45	AGLOMERADOS COTOPAXI	Cotopaxi	ECUADOR	2010	MTG 40.085H-8R+1
44	DURATEX	Taquari	BRASIL	2010	MTG 40.105L-6R+1
43	VITEBSKDREV	Vitebsk	BELARUS	2010	MTG 60.105L-10R+1
42	ROQUETTE	Beinhim	FRANCE	2010	MTG 85.125H-13R+1
41	CEB EDISON	Castellavazzo	ITALY	2009	MTG 60.105L-10R+1
40	EUCATEX	Salto	BRASIL	2009	MTG 16.055 S-2R
39	F.LLI BARBIERI	Lama Mocogno	ITALY	2009	MTG 40.105M
38	ALMUS	Tashkent	UZBEKISTAN	2009	MTG 50.105H-10R+1
37	DRAMA	Nevrokopy	GREECE	2008	MTG 85.105H-13R+1
36	IMAL	Abinsk	RUSSIA	2008	MTG 45.085*H-8R+1
35	LIGNA ENERTEC	Monfalcone	ITALY	2008	MTG 24.070
34	FOREST ENTERPRISES	Belgrad	SERBIA	2008	MTG 35.065
33	WILLIAM TELL	Johannesburg	SOUTH AFRICA	2008	MTG 35.065H-6R



MACINATORI A TAMBURO
DRUM CHIPPERS

Pos.	Cliente	Località	Paese	Anno	Codice Globus
Item	Customer	Town	Country	Year	Globus code
32	FOREST ENTERPRISES D.O.O.		RUSSIA	2008	MTG 30.065L-6R
31	INVERNIZZI	Solarolo Rainerio	ITALY	2007	MTG 40.105L-6R+1
30	NEVROKOPY	Dolni Chiflick	BULGARIA	2007	MTG 40.085H-8R+1
29	WILLIAM TELL	Johannesburg	SOUTH AFRICA	2007	MTG 40.105H-8R
28	ALFAWOOD	Pindos	GREECE	2007	MTG 85.105H-13R+1
27	PT. KUTAI TIMBER INDONESIA	Probolinggo	INDONESIA	2006	MTG 50.105H-11R
26	PT. KUTAI TIMBER INDONESIA	Probolinggo	INDONESIA	2006	MTG 30.065L-6R+1
25	VERTESI ERÖMÜ	Bokod	HUNGARY	2006	MTG 85.125H-13R+1
24	GÉPSYSTEM	Zalaegerszeg	HUNGARY	2006	MTG 85.125H-13R+1
23	INTASA	S.Sadurnino	SPAIN	2006	MTG 85.105H-13R+1
22	SUNLIGHT WOOD PRODUCTS	Karachi	PAKISTAN	2005	MTG 50.125H-11R
21	KLINKERT	Dubai	UAE	2005	MTG 40.085L-8R
20	P.G. BISON	Mpumalanga	SOUTH AFRICA	2004	MTG 85.125H-13R+1
19	KLINKERT	Guernsey	UNITED KINGDOM	2004	MTG 40.085L-8R+1
18	NEROLEGNAMI	Prato	ITALY	2004	MTG 50.105H-11R
17	AES BORSODI ENERGETIC	Kazincbarcika	HUNGARY	2003	MTG 85.125H-13R+1
16	BAKONYI ERÖMÜ ZRT.	Ajka	HUNGARY	2003	MTG 85.125H-13R+1
15	SAVOIE PAN	Tournon	FRANCE	2003	MTG 35.105L-8R
14	SUNLIGHT WOOD PRODUCTS	Karachi	PAKISTAN	2001	MTG 50.125L-11R
13	LIGNATECH	Our	FRANCE	2001	MTG 36.085L-8R
12	KLINKERT MASCHINEN	Haltheim	AUSTRIA	2001	MTG 28.065L-6R
11	BIOMASSE ITALIA	Crotone	ITALY	2000	MTG 85.125H-14R+1
10	SADEPAN L.A.	Comception	ARGENTINA	2000	MTG 50.105H-13R
9	F.LLI BARBIERI	Lama Mocogno	ITALY	1999	MTG 22.065L-6R
8	HELI ENGINEERING / CHIPBOARD	Umtata	SOUTH AFRICA	1998	MTG 50.105L-11R
7	LEGNOCHIMICA	Rende	ITALY	1998	MTG 85.125H-13R+1
6	LUEN FAT HONG	Nakay	LAOS	1997	MTG 36.085L-8R
5	VERNEA	Vinovo	ITALY	1996	MTG 85.125H-17R
4	LOMA / AL-MESH	Etiopia	ETHIOPIA	1995	MTG 35.065L-8R
3	VERNEA	Vinovo	ITALY	1995	MTG 36.105L-8R
2	KLINKERT	Waldkraiburg	GERMANY	1993	MTG 30.065L-6R
1	DAIICHI	Nonthaburi / BKK	THAILAND	1991	MTG 60.085H-17R



GRUPPI DEFERIZZATORI

IRON REMOVAL UNITS

Pos.	Ciente	Località	Paese	Anno	Codice Globus
Item	Customer	Town	Country	Year	Globus code
414	FUREN GROUP FORESTRY INDUSTRY CO.	Shaowu City, Nanping City	P.R.C.	2024	SRC 14.690-EVO4
413	COMPLY INDUSTRIES LTD.	Nakuru	KENYA	2024	SRC 14.490-EVO4
412	JIANGSU HUABAN NEW MATERIAL TECHNOLOGY	Suqian City, Jiangsu Province	P.R.C.	2024	SRC 14.690-EVO4
411	JIANGSU HUABAN NEW MATERIAL TECHNOLOGY	Suqian City, Jiangsu Province	P.R.C.	2024	SRC 14.690-EVO4
410	JIANGSU HUABAN NEW MATERIAL TECHNOLOGY	Suqian City, Jiangsu Province	P.R.C.	2024	SRC 14.690-EVO4
409	JIANGSU HUABAN NEW MATERIAL TECHNOLOGY	Suqian City, Jiangsu Province	P.R.C.	2024	SRC 14.690-EVO4
408	JIANGSU HUABAN NEW MATERIAL TECHNOLOGY	Suqian City, Jiangsu Province	P.R.C.	2024	SRC 14.690-EVO4
407	YAAN HUILONG NEW MATERIALS	YaAn industry zone, Sichuan province	P.R.C.	2023	SRC 14.690-EVO4
406	YAAN HUILONG NEW MATERIALS	YaAn industry zone, Sichuan province	P.R.C.	2023	SRC 14.690-EVO4
405	YAAN HUILONG NEW MATERIALS	YaAn industry zone, Sichuan province	P.R.C.	2023	SRC 14.690-EVO4
404	YAAN HUILONG NEW MATERIALS	YaAn industry zone, Sichuan province	P.R.C.	2023	SRC 14.690-EVO4
403	YAAN HUILONG NEW MATERIALS	YaAn industry zone, Sichuan province	P.R.C.	2023	SRC 14.690-EVO4
402	YAAN HUILONG NEW MATERIALS	YaAn industry zone, Sichuan province	P.R.C.	2023	SRC 14.690-EVO4
401	YAAN HUILONG NEW MATERIALS	YaAn industry zone, Sichuan province	P.R.C.	2023	SRC 14.690-EVO4
400	YAAN HUILONG NEW MATERIALS	YaAn industry zone, Sichuan province	P.R.C.	2023	SRC 14.690-EVO4
399	HUBEI NINGFENG	HuangGang city, Hubei province	P.R.C.	2023	SRC 14.690-EVO4
398	HUBEI NINGFENG	HuangGang city, Hubei province	P.R.C.	2023	SRC 14.690-EVO4
397	HUBEI NINGFENG	HuangGang city, Hubei province	P.R.C.	2023	SRC 14.690-EVO4
396	HUBEI NINGFENG	HuangGang city, Hubei province	P.R.C.	2023	SRC 14.690-EVO4
395	HUBEI NINGFENG	HuangGang city, Hubei province	P.R.C.	2023	SRC 14.690-EVO4
394	HUBEI NINGFENG	HuangGang city, Hubei province	P.R.C.	2023	SRC 14.690-EVO4
393	HUBEI NINGFENG	HuangGang city, Hubei province	P.R.C.	2023	SRC 14.690-EVO4
392	HUBEI NINGFENG	HuangGang city, Hubei province	P.R.C.	2023	SRC 14.690-EVO4
391	HUBEI NINGFENG	HuangGang city, Hubei province	P.R.C.	2023	SRC 14.690-EVO4
390	HUBEI NINGFENG	HuangGang city, Hubei province	P.R.C.	2023	SRC 14.690-EVO4
389	XILOPAN S.P.A.	Cigognola	ITALY	2023	SRC 14.690-EVO4
388	JINGDE BAISHIDA NEW MATERIAL CO	Xuancheng City, AnHui Province	P.R.C.	2023	SRC 14.690-EVO4
387	JINGDE BAISHIDA NEW MATERIAL CO	Xuancheng City, AnHui Province	P.R.C.	2023	SRC 14.690-EVO4
386	JINGDE BAISHIDA NEW MATERIAL CO	Xuancheng City, AnHui Province	P.R.C.	2023	SRC 14.690-EVO4
385	JINGDE BAISHIDA NEW MATERIAL CO	Xuancheng City, AnHui Province	P.R.C.	2023	SRC 14.690-EVO4
384	JINGDE BAISHIDA NEW MATERIAL CO	Xuancheng City, AnHui Province	P.R.C.	2023	SRC 14.690-EVO4
383	JINGDE BAISHIDA NEW MATERIAL CO	Xuancheng City, AnHui Province	P.R.C.	2023	SRC 14.690-EVO4
382	JINGDE BAISHIDA NEW MATERIAL CO	Xuancheng City, AnHui Province	P.R.C.	2023	SRC 14.690-EVO4
381	JINGDE BAISHIDA NEW MATERIAL CO	Xuancheng City, AnHui Province	P.R.C.	2023	SRC 14.690-EVO4
380	JINGDE BAISHIDA NEW MATERIAL CO	Xuancheng City, AnHui Province	P.R.C.	2023	SRC 14.690-EVO4
379	JINGDE BAISHIDA NEW MATERIAL CO	Xuancheng City, AnHui Province	P.R.C.	2023	SRC 14.690-EVO4
378	GUANGXI KAILI NEW MATERIAL	Hechi city, Guangxi Province	P.R.C.	2023	SRC 14.690-EVO4
377	GUANGXI KAILI NEW MATERIAL	Hechi city, Guangxi Province	P.R.C.	2023	SRC 14.690-EVO4
376	GUANGXI KAILI NEW MATERIAL	Hechi city, Guangxi Province	P.R.C.	2023	SRC 14.690-EVO4
375	ANSHAN ZHONGYUAN MDF PLANT	Anshan city, Liaoning province	P.R.C.	2023	SRC 14.690-EVO4
374	ANSHAN ZHONGYUAN MDF PLANT	Anshan city, Liaoning province	P.R.C.	2023	SRC 14.690-EVO4
373	ANSHAN ZHONGYUAN MDF PLANT	Anshan city, Liaoning province	P.R.C.	2023	SRC 14.690-EVO4
372	ANSHAN ZHONGYUAN MDF PLANT	Anshan city, Liaoning province	P.R.C.	2023	SRC 14.690-EVO4
371	ANHUI JINGXUAN NEW MATERIAL	Suzhou city, Anhui province	P.R.C.	2023	SRC 14.690-EVO4
370	ANHUI JINGXUAN NEW MATERIAL	Suzhou city, Anhui province	P.R.C.	2023	SRC 14.690-EVO4
369	ANHUI JINGXUAN NEW MATERIAL	Suzhou city, Anhui province	P.R.C.	2023	SRC 14.690-EVO4
368	ANHUI JINGXUAN NEW MATERIAL	Suzhou city, Anhui province	P.R.C.	2023	SRC 14.690-EVO4
367	ANHUI JINGXUAN NEW MATERIAL	Suzhou city, Anhui province	P.R.C.	2023	SRC 14.690-EVO4
366	ANHUI JINGXUAN NEW MATERIAL	Suzhou city, Anhui province	P.R.C.	2023	SRC 14.690-EVO4
365	ANHUI JINGXUAN NEW MATERIAL	Suzhou city, Anhui province	P.R.C.	2023	SRC 14.690-EVO4
364	ANHUI JINGXUAN NEW MATERIAL	Suzhou city, Anhui province	P.R.C.	2023	SRC 14.690-EVO4



GRUPPI DEFERIZZATORI

IRON REMOVAL UNITS

Pos.	Ciente	Località	Paese	Anno	Codice Globus
Item	Customer	Town	Country	Year	Globus code
363	SHANDONG NUOBODE NEW MATERIAL	Linyi city, Shandong province	P.R.C.	2023	SRC 14.690-EVO4
362	SHANDONG NUOBODE NEW MATERIAL	Linyi city, Shandong province	P.R.C.	2023	SRC 14.690-EVO4
361	SHANDONG NUOBODE NEW MATERIAL	Linyi city, Shandong province	P.R.C.	2023	SRC 14.690-EVO4
360	NEARKUDOS (TIELING) HIGH-TECH MATERIALS	Tieling city, Liaoning province	P.R.C.	2023	SRC 14.690-EVO4
359	NEARKUDOS (TIELING) HIGH-TECH MATERIALS	Tieling city, Liaoning province	P.R.C.	2023	SRC 14.690-EVO4
358	NEARKUDOS (TIELING) HIGH-TECH MATERIALS	Tieling city, Liaoning province	P.R.C.	2023	SRC 14.690-EVO4
357	NEARKUDOS (TIELING) HIGH-TECH MATERIALS	Tieling city, Liaoning province	P.R.C.	2023	SRC 14.690-EVO4
356	GUANGXI QUNYI NEW MATERIAL Co., Ltd	Laibin city, Guangxi province	P.R.C.	2023	SRC 14.690-EVO4
355	GUANGXI QUNYI NEW MATERIAL Co., Ltd	Laibin city, Guangxi province	P.R.C.	2023	SRC 14.690-EVO4
354	GUANGXI QUNYI NEW MATERIAL Co., Ltd	Laibin city, Guangxi province	P.R.C.	2023	SRC 14.690-EVO4
353	GUANGXI QUNYI NEW MATERIAL Co., Ltd	Laibin city, Guangxi province	P.R.C.	2023	SRC 14.690-EVO4
352	GUANGXI QUNYI NEW MATERIAL Co., Ltd	Laibin city, Guangxi province	P.R.C.	2023	SRC 14.690-EVO4
351	YILDIZ ENTEGRE A.Ş.	Uzunbey, Kartepe - Kocaeli	TURKEY	2023	MSG 1500-760-EVO4
350	JINMU MEIJIA	Tangshan city, Hebei province	P.R.C.	2023	SRC 14.690-EVO4
349	JINMU MEIJIA	Tangshan city, Hebei province	P.R.C.	2023	SRC 14.690-EVO4
348	JINMU MEIJIA	Tangshan city, Hebei province	P.R.C.	2023	SRC 14.690-EVO4
347	YUNJING FEILIN (PU'ER) NEW MATERIALS	Pu'er City, Yunnan province	P.R.C.	2023	SRC 14.690-EVO4
346	YUNJING FEILIN (PU'ER) NEW MATERIALS	Pu'er City, Yunnan province	P.R.C.	2023	SRC 14.690-EVO4
345	YUNJING FEILIN (PU'ER) NEW MATERIALS	Pu'er City, Yunnan province	P.R.C.	2023	SRC 14.690-EVO4
344	YUNJING FEILIN (PU'ER) NEW MATERIALS	Pu'er City, Yunnan province	P.R.C.	2023	SRC 14.690-EVO4
343	CHENGDE SENXI WOOD INDUSTRY	Chengde city, Hebei province	P.R.C.	2022	SRC 14.690-EVO4
342	TAIHE DONGDUN WOOD INDUSTRY	Fuyang city, Anhui province	P.R.C.	2022	SRC 14.690-EVO4
341	TAIHE DONGDUN WOOD INDUSTRY	Fuyang city, Anhui province	P.R.C.	2022	SRC 14.690-EVO4
340	HUBEI DONGLIN NEW MATERIAL	Xiaogan city, Hubei province	P.R.C.	2022	SRC 14.690-EVO4
339	HUBEI DONGLIN NEW MATERIAL	Xiaogan city, Hubei province	P.R.C.	2022	SRC 14.690-EVO4
338	HUBEI DONGLIN NEW MATERIAL	Xiaogan city, Hubei province	P.R.C.	2022	SRC 14.690-EVO4
337	HUBEI DONGLIN NEW MATERIAL	Xiaogan city, Hubei province	P.R.C.	2022	SRC 14.690-EVO4
336	HUBEI DONGLIN NEW MATERIAL	Xiaogan city, Hubei province	P.R.C.	2022	SRC 14.690-EVO4
335	HUBEI DONGLIN NEW MATERIAL	Xiaogan city, Hubei province	P.R.C.	2022	SRC 14.690-EVO4
334	GUANGXI YUANFENG NEW MATERIAL	Nanning city, Guangxi province	P.R.C.	2022	SRC 14.690-EVO4
333	GUANGXI YUANFENG NEW MATERIAL	Nanning city, Guangxi province	P.R.C.	2022	SRC 14.690-EVO4
332	GUANGXI YUANFENG NEW MATERIAL	Nanning city, Guangxi province	P.R.C.	2022	SRC 14.690-EVO4
331	HEBEI JIANFENG WOOD INDUSTRY	Tangshan city, Hebei province	P.R.C.	2022	SRC 14.690-EVO4
330	HEBEI JIANFENG WOOD INDUSTRY	Tangshan city, Hebei province	P.R.C.	2022	SRC 14.690-EVO4
329	HEBEI JIANFENG WOOD INDUSTRY	Tangshan city, Hebei province	P.R.C.	2022	SRC 14.690-EVO4
328	HEBEI JIANFENG WOOD INDUSTRY	Tangshan city, Hebei province	P.R.C.	2022	SRC 14.690-EVO4
327	CITADEL INTL Trading LLC	Dubai Media city	DUBAI, UAE	2022	RMG 600.75-3
326	SANHUAN HUALAN	Chibi city, Hubei province	P.R.C.	2022	SRC 14.690-EVO4
325	SANHUAN HUALAN	Chibi city, Hubei province	P.R.C.	2022	SRC 14.690-EVO4
324	YAAN HUILONG NEW MATERIALS	YaAn industry zone, Sichuan province	P.R.C.	2022	SRC 14.690-EVO4
323	JINYU Tiantan	Tangshan city, Hebei province	P.R.C.	2022	SRC 14.690-EVO4
322	JINYU Tiantan	Tangshan city, Hebei province	P.R.C.	2022	SRC 14.690-EVO4
321	GREENLAM	Andhra Pradesh	INDIA	2022	MSG 1500-760-EVO4
320	GREENLAM	Andhra Pradesh	INDIA	2022	MSG 1500-760-EVO4
319	GREENLAM	Andhra Pradesh	INDIA	2022	SRC 14.690-EVO4
318	GREENLAM	Andhra Pradesh	INDIA	2022	SRC 14.690-EVO4
317	GREENLAM	Andhra Pradesh	INDIA	2022	SRC 14.690-EVO4
316	HUBEI NINGFENG	HuangGang city, Hubei province	P.R.C.	2022	SRC 14.690-EVO4
315	HUBEI NINGFENG	HuangGang city, Hubei province	P.R.C.	2022	SRC 14.690-EVO4
314	HUBEI NINGFENG	HuangGang city, Hubei province	P.R.C.	2022	SRC 14.690-EVO4
313	HUBEI NINGFENG	HuangGang city, Hubei province	P.R.C.	2022	SRC 14.690-EVO4
312	HUBEI NINGFENG	HuangGang city, Hubei province	P.R.C.	2022	SRC 14.690-EVO4



GRUPPI DEFERIZZATORI

IRON REMOVAL UNITS

Pos.	Ciente	Località	Paese	Anno	Codice Globus
Item	Customer	Town	Country	Year	Globus code
311	HUBEI NINGFENG	HuangGang city, Hubei province	P.R.C.	2022	SRC 14.690-EVO4
310	HUBEI NINGFENG	HuangGang city, Hubei province	P.R.C.	2022	SRC 14.690-EVO4
309	HUBEI NINGFENG	HuangGang city, Hubei province	P.R.C.	2022	SRC 14.690-EVO4
308	HUBEI NINGFENG	HuangGang city, Hubei province	P.R.C.	2022	SRC 14.690-EVO4
307	HUBEI NINGFENG	HuangGang city, Hubei province	P.R.C.	2022	SRC 14.690-EVO4
306	ANHUI WANQING BAMBOO INDUSTRY	Liuan city, Anhui province	P.R.C.	2022	SRC 14.690-EVO4
305	GUANGXI LUBANG NEW MATERIAL	Laibin city, Guangxi province	P.R.C.	2022	SRC 14.690-EVO4
304	GUANGXI LUBANG NEW MATERIAL	Laibin city, Guangxi province	P.R.C.	2022	SRC 14.690-EVO4
303	GUANGXI LUBANG NEW MATERIAL	Laibin city, Guangxi province	P.R.C.	2022	SRC 14.690-EVO4
302	GUANGXI LUBANG NEW MATERIAL	Laibin city, Guangxi province	P.R.C.	2022	SRC 14.690-EVO4
301	PT. KUTAI TIMBER INDONESIA	Probolinggo	INDONESIA	2022	SRC 14.490-EVO4
300	GALLOWAY GROUP (DINGYUAN)	Dingyuan, Anhui province	P.R.C.	2022	MSG 1500-760-EVO4
299	GALLOWAY GROUP (DINGYUAN)	Dingyuan, Anhui province	P.R.C.	2022	MSG 1500-760-EVO4
298	GALLOWAY GROUP (DINGYUAN)	Dingyuan, Anhui province	P.R.C.	2022	MSG 1500-760-EVO4
297	GALLOWAY GROUP (DINGYUAN)	Dingyuan, Anhui province	P.R.C.	2022	SRC 14.690-EVO4
296	GALLOWAY GROUP (DINGYUAN)	Dingyuan, Anhui province	P.R.C.	2022	SRC 14.690-EVO4
295	GALLOWAY GROUP (DINGYUAN)	Dingyuan, Anhui province	P.R.C.	2022	SRC 14.690-EVO4
294	GALLOWAY GROUP (DINGYUAN)	Dingyuan, Anhui province	P.R.C.	2022	SRC 14.690-EVO4
293	GALLOWAY GROUP (DINGYUAN)	Dingyuan, Anhui province	P.R.C.	2022	SRC 14.690-EVO4
292	GALLOWAY GROUP (DINGYUAN)	Zumadian city, Henan province	P.R.C.	2022	SRC 14.690-EVO4
291	GALLOWAY GROUP (DINGYUAN)	Zumadian city, Henan province	P.R.C.	2022	SRC 14.690-EVO4
290	GALLOWAY GROUP (DINGYUAN)	Zumadian city, Henan province	P.R.C.	2022	SRC 14.690-EVO4
289	GALLOWAY GROUP (DINGYUAN)	Zumadian city, Henan province	P.R.C.	2022	SRC 14.690-EVO4
288	GALLOWAY GROUP (DINGYUAN)	Zumadian city, Henan province	P.R.C.	2022	SRC 14.690-EVO4
287	LUONING SANHUAN	Luoyang city, Henan province	P.R.C.	2022	SRC 14.690-EVO4
286	LAMINEX GROUP PTY LTD	Dardanup	AUSTRALIA	2022	MSG 1500-760-EVO4
285	ANSHAN ZHONGYUAN MDF PLANT	Anshan city, Liaoning province	P.R.C.	2022	SRC 14.690-EVO4
284	BERNECK S.A.	Curitibanos	BRAZIL	2022	MSG 1500-760-EVO4
283	BERNECK S.A.	Curitibanos	BRAZIL	2022	MSG 1500-760-EVO4
282	BERNECK S.A.	Curitibanos	BRAZIL	2022	SRC 14.690-EVO4
281	BERNECK S.A.	Curitibanos	BRAZIL	2022	SRC 14.690-EVO4
280	BERNECK S.A.	Curitibanos	BRAZIL	2022	SRC 14.690-EVO4
279	BERNECK S.A.	Curitibanos	BRAZIL	2022	SRC 14.690-EVO4
278	ANHUI LIUAN YEJI LIREN WOOD INDUSTRY	Liuan city, Anhui province	P.R.C.	2021	SRC 14.690-EVO4
277	TANGXIAN HUIYIN WOOD INDUSTRY	Baoding city, Hebei province	P.R.C.	2021	SRC 14.690-EVO4
276	BAZHONG JIANFENG NEW MATERIAL	Bazhong city, Sichuan province	P.R.C.	2021	SRC 14.690-EVO4
275	BAZHONG JIANFENG NEW MATERIAL	Bazhong city, Sichuan province	P.R.C.	2021	SRC 14.690-EVO4
274	I-PAN S.P.A.	Coniolo	ITALY	2021	PZKR 12-450
273	TABLEROS HISPANOS	Lugo	SPAIN	2021	SRC 14.690-EVO4
272	LAOHEKOU DINGFENG WOOD	Laohekou city, Xiangyang, Hubei province	P.R.C.	2021	SRC 14.690-EVO4
271	LAOHEKOU DINGFENG WOOD	Laohekou city, Xiangyang, Hubei province	P.R.C.	2021	SRC 14.690-EVO4
270	LAOHEKOU DINGFENG WOOD	Laohekou city, Xiangyang, Hubei province	P.R.C.	2021	SRC 14.690-EVO4
269	ANSHAN ZHONGYUAN MDF PLANT	Anshan city, Liaoning province	P.R.C.	2021	SRC 14.690-EVO4
268	TABLEROS HISPANOS	Lugo	SPAIN	2020	MSG 1500-760-EVO4
267	TABLEROS HISPANOS	Lugo	SPAIN	2020	MSG 1500-760-EVO4
266	SHANGQIU DINGFENG WOOD	Shangqiu city, Henan province	P.R.C.	2020	SRC 14.690-EVO4



GRUPPI DEFERIZZATORI

IRON REMOVAL UNITS

Pos.	Ciente	Località	Paese	Anno	Codice Globus
Item	Customer	Town	Country	Year	Globus code
265	BAZHONG JIANFENG NEW MATERIAL	Bazhong city, Sichuan province	P.R.C.	2020	SRC 14.690-EVO4
264	BAZHONG JIANFENG NEW MATERIAL	Bazhong city, Sichuan province	P.R.C.	2020	SRC 14.690-EVO4
263	BAZHONG JIANFENG NEW MATERIAL	Bazhong city, Sichuan province	P.R.C.	2020	SRC 14.690-EVO4
262	CHENGDE SENXI WOOD INDUSTRY	Chengde city, Hebei province	P.R.C.	2020	MSG 1500-760-EVO4
261	CHENGDE SENXI WOOD INDUSTRY	Chengde city, Hebei province	P.R.C.	2020	SRC 14.690-EVO4
260	CHENGDE SENXI WOOD INDUSTRY	Chengde city, Hebei province	P.R.C.	2020	SRC 14.690-EVO4
259	CHENGDE SENXI WOOD INDUSTRY	Chengde city, Hebei province	P.R.C.	2020	SRC 14.690-EVO4
258	LIAONING NIER KEDA ENVIRONMENTAL	Tieling city, Liaoning province	P.R.C.	2020	SRC 14.690-EVO4
257	LIAONING NIER KEDA ENVIRONMENTAL	Tieling city, Liaoning province	P.R.C.	2020	SRC 14.690-EVO4
256	LIAONING NIER KEDA ENVIRONMENTAL	Tieling city, Liaoning province	P.R.C.	2020	SRC 14.690-EVO4
255	LIUAN DONGDUN WOOD INDUSTRY	Lu'an city, Anhui province	P.R.C.	2020	SRC 14.690-EVO4
254	ANSHAN ZHONGYUAN MDF PLANT	Anshan city, Liaoning province	P.R.C.	2020	SRC 14.690-EVO4
253	YAAN HUILONG NEW MATERIALS	YaAn industry zone, Sichuan province	P.R.C.	2020	SRC 14.690-EVO4
252	YAAN HUILONG NEW MATERIALS	YaAn industry zone, Sichuan province	P.R.C.	2020	SRC 14.690-EVO4
251	YAAN HUILONG NEW MATERIALS	YaAn industry zone, Sichuan province	P.R.C.	2020	SRC 14.690-EVO4
250	YAAN HUILONG NEW MATERIALS	YaAn industry zone, Sichuan province	P.R.C.	2020	SRC 14.690-EVO4
249	RIZHAO OSBONE DECORATION MATERIAL	Rizhao city, Shandong province	P.R.C.	2020	SRC 14.690-EVO4
248	RIZHAO OSBONE DECORATION MATERIAL	Rizhao city, Shandong province	P.R.C.	2020	SRC 14.690-EVO4
247	TANGXIAN HUIYIN WOOD INDUSTRY	Baoding city, Hebei province	P.R.C.	2019	SRC 14.690-EVO4
246	NORBORD EUROPE Ltd.	Genk	BELGIUM	2019	RSG 14.690-GT
245	INDUNOR S.A.	La Escondida - Chaco	ARGENTINA	2019	MSG 1500-760-EVO3
244	INDUNOR S.A.	La Escondida - Chaco	ARGENTINA	2019	MSG 1500-760-EVO3
243	SONAE ARAUCO SA	Estación Linares-Baeza (Jaen)	SPAIN	2019	SRC 14.690-EVO4
242	HEBEI SHENGAOSONG WOOD INDUSTRY	LuanNan county, Hebei province	P.R.C.	2019	SRC 14.690-EVO4
241	HEBEI SHENGAOSONG WOOD INDUSTRY	LuanNan county, Hebei province	P.R.C.	2019	SRC 14.690-EVO4
240	HEBEI SHENGAOSONG WOOD INDUSTRY	LuanNan county, Hebei province	P.R.C.	2019	SRC 14.690-EVO4
239	OKURA INDUSTRIAL	Mitoyo-shi, Kagawa-ken	JAPAN	2019	SRC 14.690-EVO4
238	OKURA INDUSTRIAL	Mitoyo-shi, Kagawa-ken	JAPAN	2019	SRC 14.690-EVO4
237	LINYI XINGANG	Linyi city, Shandong province	P.R.C.	2018	SRC 14.690-EVO4
236	SHANDONG FENGYUAN	Zaozhuang city, Shandong province	P.R.C.	2018	RSG 14.690-GT
235	SHANDONG FENGYUAN	Zaozhuang city, Shandong province	P.R.C.	2018	RSG 14.690-GT
234	SHANDONG FENGYUAN	Zaozhuang city, Shandong province	P.R.C.	2018	RSG 14.690-GT
233	FINSA	Cella Teruel	SPAIN	2018	SRC 14.690-EVO4
232	WANHUA ECOBOARD Ltd.	Beijing city, Beijing province	P.R.C.	2018	MSG 1500-760-EVO3
231	WANHUA ECOBOARD Ltd.	Beijing city, Beijing province	P.R.C.	2018	MSG 1500-760-EVO3
230	WANHUA ECOBOARD Ltd.	Beijing city, Beijing province	P.R.C.	2018	MSG 1500-760-EVO3
229	WANHUA ECOBOARD Ltd.	Beijing city, Beijing province	P.R.C.	2018	MSG 1500-760-EVO3
228	WANHUA ECOBOARD (XINYANG)	Xinyang city, Henan province	P.R.C.	2018	MSG 1500-760-EVO3
227	WANHUA ECOBOARD (XINYANG)	Xinyang city, Henan province	P.R.C.	2018	MSG 1500-760-EVO3
226	LIUAN DONGDUN WOOD INDUSTRY	Lu'an city, Anhui province	P.R.C.	2018	SRC 14.690-EVO4
225	LIUAN DONGDUN WOOD INDUSTRY	Lu'an city, Anhui province	P.R.C.	2018	SRC 14.690-EVO4
224	LIUAN DONGDUN WOOD INDUSTRY	Lu'an city, Anhui province	P.R.C.	2018	SRC 14.690-EVO4
223	UNIBOARD PARTICLEBOARD DIVISION	Val d'Or	CANADA	2018	MSG 1500-760-EVO3
222	UNIBOARD PARTICLEBOARD DIVISION	Val d'Or	CANADA	2018	MSG 1500-760-EVO3
221	KRONOSPAN LLC	Eastaboga, AL	U.S.A.	2018	SRC 14.690-EVO4
220	KRONOSPAN LLC	Eastaboga, AL	U.S.A.	2018	SRC 14.690-EVO4
219	KRONOSPAN LLC	Eastaboga, AL	U.S.A.	2018	SRC 14.690-EVO4



GRUPPI DEFERIZZATORI

IRON REMOVAL UNITS

Pos.	Ciente	Località	Paese	Anno	Codice Globus
Item	Customer	Town	Country	Year	Globus code
218	KRONOSPAN LLC	Eastaboga, AL	U.S.A.	2018	SRC 14.690-EVO4
217	KRONOSPAN LLC	Eastaboga, AL	U.S.A.	2018	SRC 14.690-EVO4
216	KRONOSPAN LLC	Eastaboga, AL	U.S.A.	2018	SRC 14.690-EVO4
215	KRONOSPAN LLC	Eastaboga, AL	U.S.A.	2018	MSG 1500-760-EVO3
214	KRONOSPAN LLC	Eastaboga, AL	U.S.A.	2018	MSG 1500-760-EVO3
213	KRONOSPAN LLC	Eastaboga, AL	U.S.A.	2018	MSG 1500-760-EVO3
212	NOVOPAN DEL ECUADOR	Itulcachi	ECUADOR	2017	MSG 1500-760
211	NOVOPAN DEL ECUADOR	Itulcachi	ECUADOR	2017	MSG 1500-760
210	SADEPAN LATINOAMERICANA S.A.	Concepción	ARGENTINA	2017	SRC 14.490-EVO4
209	EGGER HOLZWERKSTOFFE WISMAR	Wismar	GERMANY	2017	RSG 14.690-GT
208	SHANDONG HEZE MAOSHENG WOOD	Heze city, Shandong province	CHINA	2017	SRC 14.690-EVO4
207	HENAN GALLOWAY WOOD IND.	Zumadian city, Henan province	P.R.C.	2017	SRC 14.690-EVO4
206	BORG MANUFACTURING Pty Ltd.	Oberon	AUSTRALIA	2017	MSG 1500-760
205	BORG MANUFACTURING Pty Ltd.	Oberon	AUSTRALIA	2017	MSG 1500-760
204	BORG MANUFACTURING Pty Ltd.	Oberon	AUSTRALIA	2017	SRC 14.690-EVO4
203	BORG MANUFACTURING Pty Ltd.	Oberon	AUSTRALIA	2017	SRC 14.690-EVO4
202	BORG MANUFACTURING Pty Ltd.	Oberon	AUSTRALIA	2017	SRC 14.690-EVO4
201	BORG MANUFACTURING Pty Ltd.	Oberon	AUSTRALIA	2017	SRC 14.690-EVO4
200	BORG MANUFACTURING Pty Ltd.	Oberon	AUSTRALIA	2017	SRC 14.690-EVO4
199	ALLGREEN TIMBER PRODUCTS	Segamat Johor	MALAYSIA	2017	MSG 1500-760
198	ALLGREEN TIMBER PRODUCTS	Segamat Johor	MALAYSIA	2017	SRC 14.690-EVO4
197	ALLGREEN TIMBER PRODUCTS	Segamat Johor	MALAYSIA	2017	SRC 14.690-EVO4
196	WANHUA (XINYANG) ECOBOARD	Xinyang city, Henan province	P.R.C.	2017	MSG 1500-760
195	WANHUA (XINYANG) ECOBOARD	Xinyang city, Henan province	P.R.C.	2017	MSG 1500-760
194	WANHUA (XINYANG) ECOBOARD	Xinyang city, Henan province	P.R.C.	2017	SRC 14.690-EVO4
193	WANHUA (XINYANG) ECOBOARD	Xinyang city, Henan province	P.R.C.	2017	SRC 14.690-EVO4
192	WANHUA (XINYANG) ECOBOARD	Xinyang city, Henan province	P.R.C.	2017	SRC 14.690-EVO4
191	HOTOLI GROUP ZHANJIANG RUNBAO	Zhanjiang city, Guandong province	P.R.C.	2016	SRC 14.690-EVO4
190	HOTOLI GROUP ZHANJIANG RUNBAO	Zhanjiang city, Guandong province	P.R.C.	2016	SRC 14.690-EVO4
189	HOTOLI GROUP ZHANJIANG RUNBAO	Zhanjiang city, Guandong province	P.R.C.	2016	SRC 14.690-EVO4
188	HUANING KELIN WOOD IND.	Anqing city, Anhui province	P.R.C.	2016	SRC 14.690-EVO4
187	HUANING KELIN WOOD IND.	Anqing city, Anhui province	P.R.C.	2016	SRC 14.690-EVO4
186	HUANING KELIN WOOD IND.	Anqing city, Anhui province	P.R.C.	2016	SRC 14.690-EVO4
185	UNILIN DIVISION PANELS - SPANO	Oostrozebeke	BELGIUM	2016	SRC 14.690-EVO4
184	UNILIN DIVISION PANELS - SPANO	Oostrozebeke	BELGIUM	2016	SRC 14.690-EVO4
183	XIANGHE TIANYA WOOD IND.	Langang city, Hebei province	P.R.C.	2016	MSG 1500-760
182	XIANGHE TIANYA WOOD IND.	Langang city, Hebei province	P.R.C.	2016	SRC 14.690-EVO4
181	XIANGHE TIANYA WOOD IND.	Langang city, Hebei province	P.R.C.	2016	SRC 14.690-EVO4
180	XIANGHE TIANYA WOOD IND.	Langang city, Hebei province	P.R.C.	2016	SRC 14.690-EVO4
179	HENAN GALLOWAY WOOD IND.	Zumadian city, Henan province	P.R.C.	2016	SRC 14.690-EVO4
178	HENAN GALLOWAY WOOD IND.	Zumadian city, Henan province	P.R.C.	2016	SRC 14.690-EVO4
177	HENAN GALLOWAY WOOD IND.	Zumadian city, Henan province	P.R.C.	2016	SRC 14.690-EVO4
176	FABRYKI MEBLI "FORTE"	Ostrow Mazowiecka	POLAND	2016	MSG 1500-760
175	FABRYKI MEBLI "FORTE"	Ostrow Mazowiecka	POLAND	2016	SRC 14.690-EVO4
174	FABRYKI MEBLI "FORTE"	Ostrow Mazowiecka	POLAND	2016	SRC 14.690-EVO4
173	FABRYKI MEBLI "FORTE"	Ostrow Mazowiecka	POLAND	2016	SRC 14.690-EVO4
172	FABRYKI MEBLI "FORTE"	Ostrow Mazowiecka	POLAND	2016	SRC 14.690-EVO4



GRUPPI DEFERIZZATORI

IRON REMOVAL UNITS

Pos.	Ciente	Località	Paese	Anno	Codice Globus
Item	Customer	Town	Country	Year	Globus code
171	FABRYKI MEBLI "FORTE"	Ostrow Mazowiecka	POLAND	2016	SRC 14.690-EVO4
170	PG BISON	Piet Retief	SOUTH AFRICA	2016	MSG 1500-760
169	SIT - Mauro Saviola Group	Mortara	ITALY	2016	MSG 1500-760
168	HEVEABOARD BERHAD	Gemas	MALAYSIA	2015	SRC 14.690-EVO4
167	HEVEABOARD BERHAD	Gemas	MALAYSIA	2015	SRC 14.690-EVO4
166	HEVEABOARD BERHAD	Gemas	MALAYSIA	2015	SRC 14.690-EVO4
165	ALLGREEN TIMBER PRODUCTS	Segamat Johor	MALAYSIA	2015	MSG 1500-760
164	ALLGREEN TIMBER PRODUCTS	Segamat Johor	MALAYSIA	2015	SRC 14.690-EVO4
163	ALLGREEN TIMBER PRODUCTS	Segamat Johor	MALAYSIA	2015	SRC 14.690-EVO4
162	NORBORD EUROPE Ltd.	Inverness	SCOTLAND	2015	RSG 14.690-48C
161	HEVEABOARD BERHAD	Gemas	MALAYSIA	2015	SRC 14.690-EVO4
160	TABLEROS LOSAN	Soria	SPAIN	2015	SRC 14.690-EVO4
159	D&R HENDERSON	Benalla	AUSTRALIA	2014	SRC 14.690-EVO4
158	UNILIN DIVISION PANELS - CHIPBOARDS	Wielsbeke	BELGIUM	2014	SRC 14.690 AR-54C
157	UNILIN DIVISION PANELS - CHIPBOARDS	Wielsbeke	BELGIUM	2014	SRC 14.690 AR-54C
156	STAR PARTICLE BOARD	Narayangonj	BANGLADESH	2014	MCG 510
155	KRONOSPAN OSB	Strezelce Opolskie	POLAND	2014	MSG 1500-760
154	KRONOSPAN OSB	Strezelce Opolskie	POLAND	2014	MSG 1500-760
153	KASTAMONU BULGARIA AD	Gorno Sahrane	BULGARIA	2013	SRC 14.690 AR-54C
152	KASTAMONU BULGARIA AD	Gorno Sahrane	BULGARIA	2013	SRC 14.690 AR-54C
151	KRONOSPAN Bolderaja	Bolderaja	LATVIA	2013	SRC 14.690 AR-54C
150	KRONOSPAN GmbH	Sandebeck	GERMANY	2013	SRC 14.690 AR-54C
149	KRONOSPAN GmbH	Sandebeck	GERMANY	2013	SRC 14.690 AR-54C
148	UNILIN DIVISION PANELS - CHIPBOARDS	Wielsbeke	BELGIUM	2013	SRC 14.690 AR-54C
147	SUNGCHANG	Ulsan	KOREA	2013	SRC 14.690 AR-54C
146	SUNGCHANG	Ulsan	KOREA	2013	SRC 14.690 AR-54C
145	SANAYE KIMIA CHOOB GOLESTAN	Gorgan	IRAN	2012	SRC 1400-AR-54C
144	SANAYE KIMIA CHOOB GOLESTAN	Gorgan	IRAN	2012	SRC 1400-AR-54C
143	SADEPAN LATINOAMERICANA	Conception d. U.	ARGENTINA	2012	SRC 1400-AR-48C
142	SADEPAN LATINOAMERICANA	Conception d. U.	ARGENTINA	2012	SRC 1400-AR-48C
141	KRONOSPAN SEBES SA	Sebes	ROMANIA	2012	SRC 1400-AR-54C
140	KRONOSPAN SEBES SA	Sebes	ROMANIA	2012	SRC 1400-AR-54C
139	KRONOSPAN SEBES SA	Sebes	ROMANIA	2012	SRC 1400-AR-54C
138	CMP	Bondeno	ITALY	2012	SHM 07.10
137	CMP	Bondeno	ITALY	2012	SHM 07.10
136	CMP	Bondeno	ITALY	2012	SHM 07.10
135	CMP	Bondeno	ITALY	2012	SHM 07.10
134	CMP	Bondeno	ITALY	2012	SHM 07.10
133	CMP	Bondeno	ITALY	2012	SHM 07.10
132	NOVOPAN ECUADOR	Itulcachi	ECUADOR	2012	MSG 1500-760
131	IP ALIMOV	Novosibirsk	RUSSIA	2011	SRC 1400-AR-54C
130	IP ALIMOV	Novosibirsk	RUSSIA	2011	SRC 1400-AR-54C
129	IP ALIMOV	Novosibirsk	RUSSIA	2011	SRC 1400-AR-54C
128	KRONOSPAN SEBES SA	Sebes	ROMANIA	2011	SRC 1400-AR-48C
127	NOVOPAN DEL ECUADOR	Itulcachi	ECUADOR	2010	SRC 1400-AR-54C
126	NOVOPAN DEL ECUADOR	Itulcachi	ECUADOR	2010	SRC 1400-AR-54C
125	STAR PANEL BOARD	Malur	INDIA	2010	SRC 1400-AR-54C



GRUPPI DEFERIZZATORI

IRON REMOVAL UNITS

Pos.	Ciente	Località	Paese	Anno	Codice Globus
Item	Customer	Town	Country	Year	Globus code
124	STAR PANEL BOARD	Malur	INDIA	2010	SRC 1400-AR-54C
123	STAR PANEL BOARD	Malur	INDIA	2010	SRC 1400-AR-54C
122	STAR PANEL BOARD	Malur	INDIA	2010	SRC 1400-AR-54C
121	STAR PANEL BOARD	Malur	INDIA	2010	SRC 1400-AR-54C
120	STAR PANEL BOARD	Malur	INDIA	2010	SRC 1400-AR-54C
119	EUCATEX	Salto	BRAZIL	2010	MCG 710
118	EUCATEX	Salto	BRAZIL	2010	MCG 710
117	STAR PANEL BOARD	Malur	INDIA	2010	MCG 760
116	STAR PANEL BOARD	Malur	INDIA	2010	MCG 760
115	STAR PANEL BOARD	Malur	INDIA	2010	MCG 760
114	SAIB	Caorso	ITALY	2010	MCG 710
113	KS-ALMUS	Tashkent	UZ	2009	SRC 1400-AR-54C
112	KS-ALMUS	Tashkent	UZ	2009	SRC 1400-AR-54C
111	MODUL SYSTEME	Laufen	GERMANY	2009	MCG 760
110	STAR PANEL	Karnataka	INDIA	2009	MCG 720
109	STAR PANEL	Karnataka	INDIA	2009	MCG 720
108	STAR PANEL	Karnataka	INDIA	2009	MSG 1500-760
107	ALFAWOOD BULGARIA	Dolni Chiflick	BULGARIA	2008	SRC 1400-AR-54C
106	ALFAWOOD BULGARIA	Dolni Chiflick	BULGARIA	2008	SRC 1400-AR-54C
105	WILLIAM TELL	Johannesburg	AFRICA	2008	SRC 1400-AR-54C
104	WILLIAM TELL	Johannesburg	AFRICA	2008	SRC 1400-AR-54C
103	MODUL SYSTEME	Laufen	GERMANY	2008	RCG 1200-R
102	SAIB	Caorso	ITALY	2008	MMG 12.16
101	EO2	Malakoff	FRANCE	2008	MMG 14.15*
100	DRAMA	Nevrokopi	GREECE	2008	MMG 12.16
99	MODUL SYSTEME	Laufen	GERMANY	2008	MCG 760*
98	MODUL SYSTEME	Laufen	GERMANY	2008	MCG 760*
97	WILLIAM TELL	Johannesburg	AFRICA	2008	MCG 640
96	K-SERVICE / PENZA	Novosybirsk	RUSSIA	2008	MCG 640
95	KUPELILER OTOMOTIV	Eskisehir	TURKEY	2007	RCG 1600-R/600
94	CIOP	Vicoforte	ITALY	2007	MMG 10.12
93	LATERAN	Vinkovci	UNGHERIA	2007	MMG 16.16
92	MODUL SYSTEME	Laufen	GERMANIA	2007	MMG 16.16
91	AGROHIMLES COMPANY	Pskov	RUSSIA	2007	MMG 16.16
90	FORNACI CALCE GRIGOLIN	Ponte della Priula	ITALY	2007	MMG 16.16
89	AGROHIMLES COMPANY	Pskov	RUSSIA	2007	MCG 610
88	TEVERPAN	Cerkezkoy	TURKEY	2006	SRC 1400-AR-54C
87	PT. KUTAI TIMBER INDONESIA	Probolinggo	INDONESIA	2006	SRC 1400-AR-54C
86	PT. KUTAI TIMBER INDONESIA	Probolinggo	INDONESIA	2006	RCG 1200
85	PT. KUTAI TIMBER INDONESIA	Probolinggo	INDONESIA	2006	SRC 1400-AR-54C
84	DOK	Cherkassy	UCRAINA	2006	SRC 1400-AR-54C
83	K-SERVICE/SHIRDI INDUSTRIES	Mumbai	INDIA	2006	SRC 1400-AR-54C
82	SUNLIGHT WOOD PRODUCTS	Karachi	PAKISTAN	2006	SRC 1400-AR-54C
81	DOK	Cherkassy	UCRAINA	2006	RCG 1400-AR-54C
80	BRAGA	Casalmaggiore	ITALY	2006	MMG 10.10
79	AMICO DREVO	Oravsky Podzamok	SLOVACCHIA	2006	MMG 10.10
78	BRAGA	Casalmaggiore	ITALY	2006	MMG 10.10
77	BRAGA	Casalmaggiore	ITALY	2006	MMG 10.10



GRUPPI DEFERIZZATORI

IRON REMOVAL UNITS

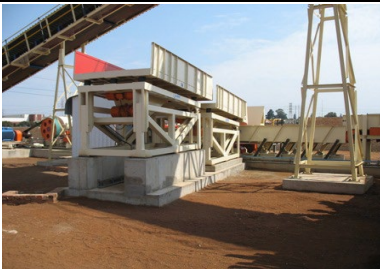
Pos. Item	Ciente Customer	Località Town	Paese Country	Anno Year	Codice Globus Globus code
76	PAL / NOVOPAN DEL ECUADOR	Quito	ECUADOR	2006	MCG 710
75	PT. KUTAI TIMBER INDONESIA	Probolinggo	INDONESIA	2006	MSG 1500-760
74	INDUSTRIA CALCE CASERTANA	Casagiove	ITALY	2006	MSG 1500-760
73	KLINKERT/SINO-PANEL	Hong Kong	HONG KONG	2005	RCG 1200-R
72	KLINKERT/SINO-PANEL	Hong Kong	HONG KONG	2005	RCG 1200-R
71	KLINKERT/SINO-PANEL	Hong Kong	HONG KONG	2005	RCG 1200-R
70	INVERNIZZI	Solarolo Rainerio	ITALY	2005	SRC 1400-AR-54C
69	BRAGA	Casalmaggiore	ITALY	2005	MMG 10.10
68	SAIB	Caorso	ITALY	2005	MMG 12.16
67	KLINKERT/SINO PANEL	Hong Kong	HONG KONG	2005	MCG 711
66	KLINKERT/SINO PANEL	Hong Kong	HONG KONG	2005	MCG 711
65	CHRIS RANDLE	Melbourne	AUSTRALIA	2004	MMG 14.16*
64	KLINKERT	St. Peter Port	UK	2004	MMG 14.18
63	BRAGA	Casalmaggiore	ITALY	2004	MMG 10.10
62	RAFOS	Braila	ROMANIA	2004	MMG 10.10
61	SAIB	Caorso	ITALY	2004	MCG 711
60	SADEPAN LATINOAMERICANA	Conception d. U.	ARGENTINA	2003	SRC 1400-AR-54C
59	FALCO	Pomposa	ITALY	2003	MSG 1500-760
58	FALCO	Pomposa	ITALY	2003	MCG 760*
57	METSO / KRASNYY OKTJABR	Tyumen	RUSSIA	2003	MCG 760
56	P.G. BISON	Mpumalanga	AFRICA	2003	MCG 640
55	KLINKERT-EVERGREEN	Parit Raja	MALESIA	2002	RCG 1200-R
54	KLINKERT-EVERGREEN	Parit Raja	MALESIA	2002	RCG 1200-R
53	BALKAN EXPORT	Thessaloniki-Veria	GREECE	2002	SRC 1400-AR.54C
52	SIT	Mortara	ITALY	2002	MSG 590
51	KLINKERT	Altheim	AUSTRIA	2001	RCG 1400
50	SUNLIGHT WOOD PRODUCTS	Karachi	PAKISTAN	2001	MMG 12.14
49	TAFISA SONAE	White River	AFRICA	2001	MCG 711
48	SAIB	Caorso	ITALY	2001	MCG 711
47	XILOPAN	Cigognola	ITALY	2001	MSG 720
46	XILOPAN	Cigognola	ITALY	2001	MSG 720
45	DEVREKTAS	Devrek	TURKEY	2000	RCG 1200-R/300
44	DEVREKTAS	Devrek	TURKEY	2000	RCG 1200-R/300
43	SADEPAN LATINOAMERICANA	Conception d. U.	ARGENTINA	2000	RCG 1400
42	SADEPAN LATINOAMERICANA	Conception d. U.	ARGENTINA	2000	RCG 1400
41	VERPAN	Villafranca	ITALY	2000	MMG 16.16
40	VERPAN	Vinovo	ITALY	2000	MMG 16.16
39	SILLA	Sustinente	ITALY	2000	MCG 720*
38	SILLA	Sustinente	ITALY	2000	MCG 720*
37	SILLA	Sustinente	ITALY	2000	MCG 720*
36	SADEPAN LATINOAMERICANA S.A.	Concepción	ARGENTINA	2000	MCG 760
35	KLINKERT	Waldkraiburg	GERMANY	1999	MMG 12.14
34	KLINKERT	Waldkraiburg	GERMANY	1999	MMG 12.14
33	KLINKERT	Waldkraiburg	GERMANY	1999	MMG 12.14
32	SIT	Mortara	ITALY	1999	MCG 720*
31	SIT	Mortara	ITALY	1999	MCG 720*
30	SIT	Mortara	ITALY	1999	MCG 720*
29	VERNEA	Vinovo	ITALY	1998	RCG 1400



GRUPPI DEFERIZZATORI

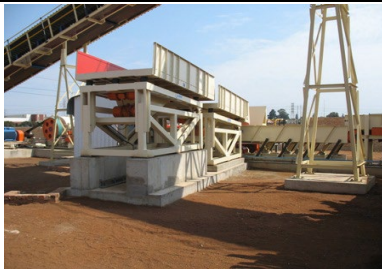
IRON REMOVAL UNITS

Pos.	Ciente	Località	Paese	Anno	Codice Globus
Item	Customer	Town	Country	Year	Globus code
28	KLINKERT	Waldkraiburg	GERMANY	1998	MMG 10.12
27	KLINKERT	Waldkraiburg	GERMANY	1998	MMG 10.12
26	SAIB	Caorso	ITALY	1998	MCG 711
25	SAIB	Caorso	ITALY	1998	MCG 711
24	PANDA	Villafranca	ITALY	1997	SRC 1400-AR
23	SACIC LEGNO	Mortara	ITALY	1997	MCG 760
22	MEDASPAN	Airuno	ITALY	1997	MCG 640*
21	PANDA	Villafranca	ITALY	1996	SRC 1400-AR
20	VERNEA	Vinovo	ITALY	1996	MCG 640
19	HELI ENGINEERING / CHIPBOARD	Umtata	AFRICA	1996	MCG 760
18	LIMBA KAYU UTAMA	Jambi	INDONESIA	1995	RCG 1200-R/300
17	LIMBA KAYU UTAMA	Jambi	INDONESIA	1995	RCG 1200-R/300
16	SIT	Mortara	ITALY	1995	MCG 720*
15	VERNEA	Vinovo	ITALY	1994	RCG 1400
14	VERNEA	Vinovo	ITALY	1993	RCG 1400
13	VERNEA	Vinovo	ITALY	1993	RCG 1400
12	IPAS	Solarolo	ITALY	1992	RCG 1000
11	KLINKERT / DAIICHI	Nonthaburi / BKK	THAILAND	1991	RCG 1400
10	KLINKERT / DAIICHI	Nonthaburi / BKK	THAILAND	1991	RCG 1400
9	PANDA	Villafranca	ITALY	1991	SRC 1400-AR
8	PANDA	Villafranca	ITALY	1991	SRC 1400-AR
7	HELI ENGINEERING / CHIPBOARD	Umtata	AFRICA	1990	RCG 1400
6	HELI ENGINEERING / CHIPBOARD	Umtata	AFRICA	1990	RCG 1400
5	SILLA	Sustinente	ITALY	1990	RCG 1400
4	MADONNINA	Borgoforte	ITALY	1989	RCG 1400
3	MADONNINA	Borgoforte	ITALY	1989	RCG 1400
2	SIA	Viadana	ITALY	1988	RCG 1400
1	SACIC LEGNO	Mortara	ITALY	1988	RCG 1400



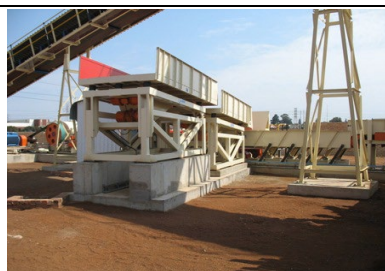
MACCHINE VIBRANTI
VIBRATING MACHINES

Pos.	Cliente	Località	Paese	Anno	Codice Globus
Item	Customer	Town	Country	Year	Globus code
489	FUREN GROUP FORESTRY INDUSTRY CO.	Shaowu City, Nanping City	P.R.C.	2024	AVG 095.235-040
488	COMPLY INDUSTRIES LTD.	Nakuru	KENYA	2024	AVG 075.235-040
487	JIANGSU HUABAN NEW MATERIAL TECHNOLOGY	Suqian City, Jiangsu Province	P.R.C.	2024	AVG 095.235-040
486	JIANGSU HUABAN NEW MATERIAL TECHNOLOGY	Suqian City, Jiangsu Province	P.R.C.	2024	AVG 095.235-040
485	JIANGSU HUABAN NEW MATERIAL TECHNOLOGY	Suqian City, Jiangsu Province	P.R.C.	2024	AVG 095.235-040
484	JIANGSU HUABAN NEW MATERIAL TECHNOLOGY	Suqian City, Jiangsu Province	P.R.C.	2024	AVG 095.235-040
483	JIANGSU HUABAN NEW MATERIAL TECHNOLOGY	Suqian City, Jiangsu Province	P.R.C.	2024	AVG 095.235-040
482	YAAN HUILONG NEW MATERIALS	YaAn industry Zone, Sichuan province	P.R.C.	2023	AVG 095.235-040
481	YAAN HUILONG NEW MATERIALS	YaAn industry Zone, Sichuan province	P.R.C.	2023	AVG 095.235-040
480	YAAN HUILONG NEW MATERIALS	YaAn industry Zone, Sichuan province	P.R.C.	2023	AVG 095.235-040
479	YAAN HUILONG NEW MATERIALS	YaAn industry Zone, Sichuan province	P.R.C.	2023	AVG 095.235-040
478	YAAN HUILONG NEW MATERIALS	YaAn industry Zone, Sichuan province	P.R.C.	2023	AVG 095.235-040
477	YAAN HUILONG NEW MATERIALS	YaAn industry Zone, Sichuan province	P.R.C.	2023	AVG 095.235-040
476	YAAN HUILONG NEW MATERIALS	YaAn industry Zone, Sichuan province	P.R.C.	2023	AVG 095.235-040
475	YAAN HUILONG NEW MATERIALS	YaAn industry Zone, Sichuan province	P.R.C.	2023	AVG 095.235-040
474	HUBEI NINGFENG	HuangGang city, Hubei province	P.R.C.	2023	AVG 095.235-040
473	HUBEI NINGFENG	HuangGang city, Hubei province	P.R.C.	2023	AVG 095.235-040
472	HUBEI NINGFENG	HuangGang city, Hubei province	P.R.C.	2023	AVG 095.235-040
471	HUBEI NINGFENG	HuangGang city, Hubei province	P.R.C.	2023	AVG 095.235-040
470	HUBEI NINGFENG	HuangGang city, Hubei province	P.R.C.	2023	AVG 095.235-040
469	HUBEI NINGFENG	HuangGang city, Hubei province	P.R.C.	2023	AVG 095.235-040
468	HUBEI NINGFENG	HuangGang city, Hubei province	P.R.C.	2023	AVG 095.235-040
467	HUBEI NINGFENG	HuangGang city, Hubei province	P.R.C.	2023	AVG 095.235-040
466	HUBEI NINGFENG	HuangGang city, Hubei province	P.R.C.	2023	AVG 095.235-040
465	HUBEI NINGFENG	HuangGang city, Hubei province	P.R.C.	2023	AVG 095.235-040
464	XILOPAN S.P.A.	Cigognola	ITALY	2023	AVG 095.235-040
463	JINGDE BAISHIDA NEW MATERIAL CO	Xuancheng City, AnHui Province	P.R.C.	2023	AVG 095.235-040
462	JINGDE BAISHIDA NEW MATERIAL CO	Xuancheng City, AnHui Province	P.R.C.	2023	AVG 095.235-040
461	JINGDE BAISHIDA NEW MATERIAL CO	Xuancheng City, AnHui Province	P.R.C.	2023	AVG 095.235-040
460	JINGDE BAISHIDA NEW MATERIAL CO	Xuancheng City, AnHui Province	P.R.C.	2023	AVG 095.235-040
459	JINGDE BAISHIDA NEW MATERIAL CO	Xuancheng City, AnHui Province	P.R.C.	2023	AVG 095.235-040
458	JINGDE BAISHIDA NEW MATERIAL CO	Xuancheng City, AnHui Province	P.R.C.	2023	AVG 095.235-040
457	JINGDE BAISHIDA NEW MATERIAL CO	Xuancheng City, AnHui Province	P.R.C.	2023	AVG 095.235-040
456	JINGDE BAISHIDA NEW MATERIAL CO	Xuancheng City, AnHui Province	P.R.C.	2023	AVG 095.235-040
455	JINGDE BAISHIDA NEW MATERIAL CO	Xuancheng City, AnHui Province	P.R.C.	2023	AVG 095.235-040
454	JINGDE BAISHIDA NEW MATERIAL CO	Xuancheng City, AnHui Province	P.R.C.	2023	AVG 095.235-040
453	GUANGXI KAILI NEW MATERIAL	Hechi city, Guangxi Province	P.R.C.	2023	AVG 095.235-040
452	GUANGXI KAILI NEW MATERIAL	Hechi city, Guangxi Province	P.R.C.	2023	AVG 095.235-040
451	GUANGXI KAILI NEW MATERIAL	Hechi city, Guangxi Province	P.R.C.	2023	AVG 095.235-040
450	ANSHAN ZHONGYUAN MDF PLANT	Anshan city, Liaoning province	P.R.C.	2023	AVG 095.235-040
449	ANSHAN ZHONGYUAN MDF PLANT	Anshan city, Liaoning province	P.R.C.	2023	AVG 095.235-040
448	ANSHAN ZHONGYUAN MDF PLANT	Anshan city, Liaoning province	P.R.C.	2023	AVG 095.235-040
447	ANSHAN ZHONGYUAN MDF PLANT	Anshan city, Liaoning province	P.R.C.	2023	AVG 095.235-040
446	ANHUI JINGXUAN NEW MATERIAL	Suzhou city, Anhui province	P.R.C.	2023	AVG 095.235-040
445	ANHUI JINGXUAN NEW MATERIAL	Suzhou city, Anhui province	P.R.C.	2023	AVG 095.235-040
444	ANHUI JINGXUAN NEW MATERIAL	Suzhou city, Anhui province	P.R.C.	2023	AVG 095.235-040
443	ANHUI JINGXUAN NEW MATERIAL	Suzhou city, Anhui province	P.R.C.	2023	AVG 095.235-040
442	ANHUI JINGXUAN NEW MATERIAL	Suzhou city, Anhui province	P.R.C.	2023	AVG 095.235-040
441	ANHUI JINGXUAN NEW MATERIAL	Suzhou city, Anhui province	P.R.C.	2023	AVG 095.235-040
440	ANHUI JINGXUAN NEW MATERIAL	Suzhou city, Anhui province	P.R.C.	2023	AVG 095.235-040
439	ANHUI JINGXUAN NEW MATERIAL	Suzhou city, Anhui province	P.R.C.	2023	AVG 095.235-040
438	SHANDONG NUOBODE NEW MATERIAL	Linyi city, Shandong province	P.R.C.	2023	AVG 095.235-040



MACCHINE VIBRANTI
VIBRATING MACHINES

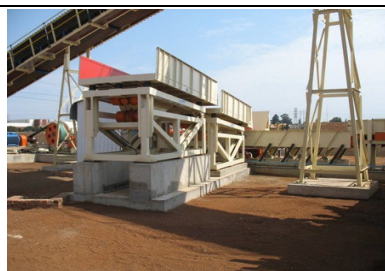
Pos.	Cliente	Località	Paese	Anno	Codice Globus
Item	Customer	Town	Country	Year	Globus code
437	SHANDONG NUOBODE NEW MATERIAL	Linyi city, Shandong province	P.R.C.	2023	AVG 095.235-040
436	SHANDONG NUOBODE NEW MATERIAL	Linyi city, Shandong province	P.R.C.	2023	AVG 095.235-040
435	NEARKUDOS (TIELING) HIGH-TECH MATERIALS	Tieling city, Liaoning province	P.R.C.	2023	AVG 095.235-040
434	NEARKUDOS (TIELING) HIGH-TECH MATERIALS	Tieling city, Liaoning province	P.R.C.	2023	AVG 095.235-040
433	NEARKUDOS (TIELING) HIGH-TECH MATERIALS	Tieling city, Liaoning province	P.R.C.	2023	AVG 095.235-040
432	NEARKUDOS (TIELING) HIGH-TECH MATERIALS	Tieling city, Liaoning province	P.R.C.	2023	AVG 095.235-040
431	GUANGXI QUNYI NEW MATERIAL	Laibin city, Guangxi province	P.R.C.	2023	AVG 095.235-040
430	GUANGXI QUNYI NEW MATERIAL	Laibin city, Guangxi province	P.R.C.	2023	AVG 095.235-040
429	GUANGXI QUNYI NEW MATERIAL	Laibin city, Guangxi province	P.R.C.	2023	AVG 095.235-040
428	GUANGXI QUNYI NEW MATERIAL	Laibin city, Guangxi province	P.R.C.	2023	AVG 095.235-040
427	GUANGXI QUNYI NEW MATERIAL	Laibin city, Guangxi province	P.R.C.	2023	AVG 095.235-040
426	YILDIZ ENTEGRE A.Ş.	Uzunbey, Kartepe - Kocaeli	TURKEY	2023	AVG 075.235-040
425	JINMU MEIJIA	Tangshan city, Hebei province	P.R.C.	2023	AVG 095.235-040
424	JINMU MEIJIA	Tangshan city, Hebei province	P.R.C.	2023	AVG 095.235-040
423	JINMU MEIJIA	Tangshan city, Hebei province	P.R.C.	2023	AVG 095.235-040
422	YUNJING FEILIN (PU'ER) NEW MATERIALS	Pu'er City, Yunnan province	P.R.C.	2023	AVG 095.235-040
421	YUNJING FEILIN (PU'ER) NEW MATERIALS	Pu'er City, Yunnan province	P.R.C.	2023	AVG 095.235-040
420	YUNJING FEILIN (PU'ER) NEW MATERIALS	Pu'er City, Yunnan province	P.R.C.	2023	AVG 095.235-040
419	YUNJING FEILIN (PU'ER) NEW MATERIALS	Pu'er City, Yunnan province	P.R.C.	2023	AVG 095.235-040
418	PT. RIMBA PARTIKEL INDONESIA	Kendal, Central Java	INDONESIA	2023	VFG 08.080-040
417	PT. RIMBA PARTIKEL INDONESIA	Kendal, Central Java	INDONESIA	2023	VTG 22.80
416	CHENGDE SENXI WOOD INDUSTRY	Chengde city, Hebei province	P.R.C.	2022	AVG 095.235-040
415	TAIHE DONGDUN WOOD INDUSTRY	Fuyang city, Anhui province	P.R.C.	2022	AVG 095.235-040
414	TAIHE DONGDUN WOOD INDUSTRY	Fuyang city, Anhui province	P.R.C.	2022	AVG 095.235-040
413	HUBEI DONGLIN NEW MATERIAL	Xiaogan city, Hubei province	P.R.C.	2022	AVG 095.235-040
412	HUBEI DONGLIN NEW MATERIAL	Xiaogan city, Hubei province	P.R.C.	2022	AVG 095.235-040
411	HUBEI DONGLIN NEW MATERIAL	Xiaogan city, Hubei province	P.R.C.	2022	AVG 095.235-040
410	HUBEI DONGLIN NEW MATERIAL	Xiaogan city, Hubei province	P.R.C.	2022	AVG 095.235-040
409	HUBEI DONGLIN NEW MATERIAL	Xiaogan city, Hubei province	P.R.C.	2022	AVG 095.235-040
408	HUBEI DONGLIN NEW MATERIAL	Xiaogan city, Hubei province	P.R.C.	2022	AVG 095.235-040
407	GUANGXI YUANFENG NEW MATERIAL	Nanning city, Guangxi province	P.R.C.	2022	AVG 095.235-040
406	GUANGXI YUANFENG NEW MATERIAL	Nanning city, Guangxi province	P.R.C.	2022	AVG 095.235-040
405	GUANGXI YUANFENG NEW MATERIAL	Nanning city, Guangxi province	P.R.C.	2022	AVG 095.235-040
404	HEBEI JIANFENG WOOD INDUSTRY	Tangshan city, Hebei province	P.R.C.	2022	AVG 095.235-040
403	HEBEI JIANFENG WOOD INDUSTRY	Tangshan city, Hebei province	P.R.C.	2022	AVG 095.235-040
402	HEBEI JIANFENG WOOD INDUSTRY	Tangshan city, Hebei province	P.R.C.	2022	AVG 095.235-040
401	HEBEI JIANFENG WOOD INDUSTRY	Tangshan city, Hebei province	P.R.C.	2022	AVG 095.235-040
400	CITADEL INTL Trading LLC	Dubai Media City	DUBAI, UAE	2022	AVG 075.235-040
399	SANHUAN HUALAN	Chibi City, Hubei province	P.R.C.	2022	AVG 095.235-040
398	SANHUAN HUALAN	Chibi City, Hubei province	P.R.C.	2022	AVG 095.235-040
397	YAAN HUILONG NEW MATERIALS	YaAn industry zone, Sichuan province	P.R.C.	2022	AVG 095.235-040
396	JINYU Tiantan	Tangshan City, Hebei province	P.R.C.	2022	AVG 095.235-040
395	JINYU Tiantan	Tangshan City, Hebei province	P.R.C.	2022	AVG 095.235-040
394	GREENLAM	Andhra Pradesh	INDIA	2022	AVG 075.235-040
393	GREENLAM	Andhra Pradesh	INDIA	2022	AVG 075.235-040
392	GREENLAM	Andhra Pradesh	INDIA	2022	AVG 095.235-040
391	GREENLAM	Andhra Pradesh	INDIA	2022	AVG 095.235-040
390	GREENLAM	Andhra Pradesh	INDIA	2022	AVG 095.235-040
389	GREENLAM	Andhra Pradesh	INDIA	2022	VTG 40.40
388	GREENLAM	Andhra Pradesh	INDIA	2022	VTG 40.80
387	GREENLAM	Andhra Pradesh	INDIA	2022	VFG 13.120-085
386	HUBEI NINGFENG	HuangGang city, Hubei province	P.R.C.	2022	AVG 095.235-040



MACCHINE VIBRANTI

VIBRATING MACHINES

Pos.	Cliente	Località	Paese	Anno	Codice Globus
Item	Customer	Town	Country	Year	Globus code
385	HUBEI NINGFENG	HuangGang city, Hubei province	P.R.C.	2022	AVG 095.235-040
384	HUBEI NINGFENG	HuangGang city, Hubei province	P.R.C.	2022	AVG 095.235-040
383	HUBEI NINGFENG	HuangGang city, Hubei province	P.R.C.	2022	AVG 095.235-040
382	HUBEI NINGFENG	HuangGang city, Hubei province	P.R.C.	2022	AVG 095.235-040
381	HUBEI NINGFENG	HuangGang city, Hubei province	P.R.C.	2022	AVG 095.235-040
380	HUBEI NINGFENG	HuangGang city, Hubei province	P.R.C.	2022	AVG 095.235-040
379	HUBEI NINGFENG	HuangGang city, Hubei province	P.R.C.	2022	AVG 095.235-040
378	HUBEI NINGFENG	HuangGang city, Hubei province	P.R.C.	2022	AVG 095.235-040
377	HUBEI NINGFENG	HuangGang city, Hubei province	P.R.C.	2022	AVG 095.235-040
376	ANHUI WANQING BAMBOO INDUSTRY	Liuan city, Anhui province	P.R.C.	2022	AVG 095.235-040
375	GUANGXI LUBANG NEW MATERIAL	Laibin city, Guangxi province	P.R.C.	2022	AVG 095.235-040
374	GUANGXI LUBANG NEW MATERIAL	Laibin city, Guangxi province	P.R.C.	2022	AVG 095.235-040
373	GUANGXI LUBANG NEW MATERIAL	Laibin city, Guangxi province	P.R.C.	2022	AVG 095.235-040
372	GUANGXI LUBANG NEW MATERIAL	Laibin city, Guangxi province	P.R.C.	2022	AVG 095.235-040
371	PT. KUTAI TIMBER INDONESIA	Probolinggo	INDONESIA	2022	AVG 075.235-040
370	GALLOWAY GROUP (DINGYUAN)	Dingyuan, Anhui province	P.R.C.	2022	AVG 075.235-040
369	GALLOWAY GROUP (DINGYUAN)	Dingyuan, Anhui province	P.R.C.	2022	AVG 075.235-040
368	GALLOWAY GROUP (DINGYUAN)	Dingyuan, Anhui province	P.R.C.	2022	AVG 075.235-040
367	GALLOWAY GROUP (DINGYUAN)	Dingyuan, Anhui province	P.R.C.	2022	AVG 095.235-040
366	GALLOWAY GROUP (DINGYUAN)	Dingyuan, Anhui province	P.R.C.	2022	AVG 095.235-040
365	GALLOWAY GROUP (DINGYUAN)	Dingyuan, Anhui province	P.R.C.	2022	AVG 095.235-040
364	GALLOWAY GROUP (DINGYUAN)	Dingyuan, Anhui province	P.R.C.	2022	AVG 095.235-040
363	GALLOWAY GROUP (DINGYUAN)	Dingyuan, Anhui province	P.R.C.	2022	AVG 095.235-040
362	GALLOWAY GROUP (DINGYUAN)	Zumadian city, Henan province	P.R.C.	2022	AVG 095.235-040
361	GALLOWAY GROUP (DINGYUAN)	Zumadian city, Henan province	P.R.C.	2022	AVG 095.235-040
360	GALLOWAY GROUP (DINGYUAN)	Zumadian city, Henan province	P.R.C.	2022	AVG 095.235-040
359	GALLOWAY GROUP (DINGYUAN)	Zumadian city, Henan province	P.R.C.	2022	AVG 095.235-040
358	GALLOWAY GROUP (DINGYUAN)	Zumadian city, Henan province	P.R.C.	2022	AVG 095.235-040
357	LUONING SANHUAN	Luoyang city, Henan province	P.R.C.	2022	AVG 095.235-040
356	LAMINEX GROUP PTY LTD	Dardanup	AUSTRALIA	2022	AVG 075.235-040
355	ANSHAN ZHONGYUAN MDF PLANT	Anshan city, Liaoning province	P.R.C.	2022	AVG 095.235-040
354	BERNECK S.A.	Curitibanos	BRAZIL	2022	AVG 075.235-040
353	BERNECK S.A.	Curitibanos	BRAZIL	2022	AVG 075.235-040
352	BERNECK S.A.	Curitibanos	BRAZIL	2022	AVG 095.235-040
351	BERNECK S.A.	Curitibanos	BRAZIL	2022	AVG 095.235-040
350	BERNECK S.A.	Curitibanos	BRAZIL	2022	AVG 095.235-040
349	BERNECK S.A.	Curitibanos	BRAZIL	2022	AVG 095.235-040
348	ANHUI LIUAN YEJI LIREN WOOD INDUSTRY	Liuan City, Anhui Province	P.R.C.	2021	AVG 095.235-040
347	BAAHU PANELS (GREEN PLY GROUP)	Sherpura	INDIA	2021	VFG 13.120-085
346	BAAHU PANELS (GREEN PLY GROUP)	Sherpura	INDIA	2021	VTG 40.80
345	TANGXIAN HUIYIN WOOD INDUSTRY	Baoding city, Hebei province	P.R.C.	2021	AVG 095.235-040
344	BAZHONG JIANFENG NEW MATERIAL	Bazhong city, Sichuan province	P.R.C.	2021	AVG 095.235-040
343	BAZHONG JIANFENG NEW MATERIAL	Bazhong city, Sichuan province	P.R.C.	2021	AVG 095.235-040
342	I-PAN S.P.A.	Coniolo	ITALY	2021	AVG 075.235-040
341	TABLEROS HISPANOS	Lugo	SPAIN	2021	AVG 095.235-040
340	LAOHEKOU DINGFENG WOOD	Laohekou city,Xiangyang, Hubei province	P.R.C.	2021	AVG 095.235-040
339	LAOHEKOU DINGFENG WOOD	Laohekou city,Xiangyang, Hubei province	P.R.C.	2021	AVG 095.235-040
338	LAOHEKOU DINGFENG WOOD	Laohekou city,Xiangyang, Hubei province	P.R.C.	2021	AVG 095.235-040



MACCHINE VIBRANTI

VIBRATING MACHINES

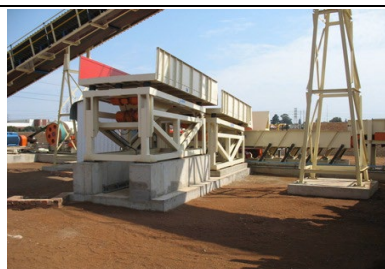
Pos.	Cliente	Località	Paese	Anno	Codice Globus
Item	Customer	Town	Country	Year	Globus code
337	ANSHAN ZHONGYUAN MDF PLANT	Anshan city, Liaoning province	P.R.C.	2021	AVG 095.235-040
336	TABLEROS HISPANOS	Lugo	SPAIN	2020	AVG 075.235-040
335	TABLEROS HISPANOS	Lugo	SPAIN	2020	AVG 075.235-040
334	SHANGQIU DINGFENG WOOD	Shangqiu city, Henan province	P.R.C.	2020	AVG 095.235-040
333	BAZHONG JIANFENG NEW MATERIAL	Bazhong city, Sichuan province	P.R.C.	2020	AVG 095.235-040
332	BAZHONG JIANFENG NEW MATERIAL	Bazhong city, Sichuan province	P.R.C.	2020	AVG 095.235-040
331	BAZHONG JIANFENG NEW MATERIAL	Bazhong city, Sichuan province	P.R.C.	2020	AVG 095.235-040
330	CHENGDE SENXI WOOD INDUSTRY	Chengde city, Hebei province	P.R.C.	2020	AVG 075.235-040
329	CHENGDE SENXI WOOD INDUSTRY	Chengde city, Hebei province	P.R.C.	2020	AVG 095.235-040
328	CHENGDE SENXI WOOD INDUSTRY	Chengde city, Hebei province	P.R.C.	2020	AVG 095.235-040
327	CHENGDE SENXI WOOD INDUSTRY	Chengde city, Hebei province	P.R.C.	2020	AVG 095.235-040
326	ALFA WOOD	Nevrokopi	GREECE	2020	AVG 140.280-040
325	CITADEL INTL Trading LLC	Dubai Media City	DUBAI, UAE	2020	AVG 150.600-050
324	LIAONING NIER KEDA ENVIRONMENTAL	Tieling city, Liaoning province	P.R.C.	2020	AVG 095.235-040
323	LIAONING NIER KEDA ENVIRONMENTAL	Tieling city, Liaoning province	P.R.C.	2020	AVG 095.235-040
322	LIAONING NIER KEDA ENVIRONMENTAL	Tieling city, Liaoning province	P.R.C.	2020	AVG 095.235-040
321	LIUAN DONGDUN WOOD INDUSTRY	Lu'an city, Anhui province	P.R.C.	2020	AVG 095.235-040
320	ANSHAN ZHONGYUAN MDF PLANT	Anshan city, Liaoning province	P.R.C.	2020	AVG 095.235-040
319	YAAN HUILONG NEW MATERIALS	YaAn industry zone, Sichuan province	P.R.C.	2020	AVG 095.235-040
318	YAAN HUILONG NEW MATERIALS	YaAn industry zone, Sichuan province	P.R.C.	2020	AVG 095.235-040
317	YAAN HUILONG NEW MATERIALS	YaAn industry zone, Sichuan province	P.R.C.	2020	AVG 095.235-040
316	YAAN HUILONG NEW MATERIALS	YaAn industry zone, Sichuan province	P.R.C.	2020	AVG 095.235-040
315	RIZHAO OSBONE DECORATION MATERIAL	Rizhao city, Shandong province	P.R.C.	2020	AVG 095.235-040
314	RIZHAO OSBONE DECORATION MATERIAL	Rizhao city, Shandong province	P.R.C.	2020	AVG 095.235-040
313	TANGXIAN HUIYIN WOOD INDUSTRY	Baoding city, Hebei province	P.R.C.	2019	AVG 095.235-040
312	LEDOGA S.R.L.	San Michele Mondovi	ITALY	2019	AVG 095.235-040
311	NORBORD EUROPE Ltd.	Genk	BELGIUM	2019	AVG 095.235-040
310	INDUNOR S.A.	La Escondida - Chaco	ARGENTINA	2019	AVG 075.235-040
309	INDUNOR S.A.	La Escondida - Chaco	ARGENTINA	2019	AVG 075.235-040
308	SONAE ARAUCO SA	Estación Linares-Baeza (Jaen)	SPAIN	2019	AVG 095.235-040
307	HEBEI SHENGAOSONG WOOD INDUSTRY	LuanNan county, Hebei province	P.R.C.	2019	AVG 095.235-040
306	HEBEI SHENGAOSONG WOOD INDUSTRY	LuanNan county, Hebei province	P.R.C.	2019	AVG 095.235-040
305	HEBEI SHENGAOSONG WOOD INDUSTRY	LuanNan county, Hebei province	P.R.C.	2019	AVG 095.235-040
304	OKURA INDUSTRIAL Co., Ltd.	Mitoyo-shi, Kagawa-ken	JAPAN	2019	AVG 095.235-040
303	OKURA INDUSTRIAL Co., Ltd.	Mitoyo-shi, Kagawa-ken	JAPAN	2019	AVG 095.235-040
302	TAKHTE FESHORDE PAKCHOOB	Khouzestan	IRAN	2019	AVG 150.600-050
301	LINYI XINGANG	Linyi city, Shandong province	P.R.C.	2018	AVG 095.235-040
300	SHANDONG FENGYUAN	Zaozhuang city, Shandong province	P.R.C.	2018	AVG 095.235-040
299	SHANDONG FENGYUAN	Zaozhuang city, Shandong province	P.R.C.	2018	AVG 095.235-040
298	SHANDONG FENGYUAN	Zaozhuang city, Shandong province	P.R.C.	2018	AVG 095.235-040
297	FINSA	Cella Teruel	SPAIN	2018	AVG 095.235-040
296	WANHUA ECOBOARD Ltd.	Beijing city, Beijing province	P.R.C.	2018	AVG 075.235-040
295	WANHUA ECOBOARD Ltd.	Beijing city, Beijing province	P.R.C.	2018	AVG 075.235-040
294	WANHUA ECOBOARD Ltd.	Beijing city, Beijing province	P.R.C.	2018	AVG 075.235-040
293	WANHUA ECOBOARD Ltd.	Beijing city, Beijing province	P.R.C.	2018	AVG 075.235-040
292	WANHUA ECOBOARD (XINYANG)	Xinyang city, Henan province	P.R.C.	2018	AVG 075.235-040
291	WANHUA ECOBOARD (XINYANG)	Xinyang city, Henan province	P.R.C.	2018	AVG 075.235-040



MACCHINE VIBRANTI

VIBRATING MACHINES

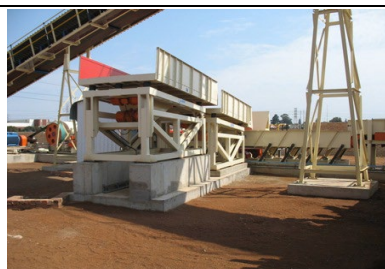
Pos.	Cliente	Località	Paese	Anno	Codice Globus
Item	Customer	Town	Country	Year	Globus code
290	LIUAN DONGDUN WOOD INDUSTRY	Lu'an city, Anhui province	P.R.C.	2018	AVG 095.235-040
289	LIUAN DONGDUN WOOD INDUSTRY	Lu'an city, Anhui province	P.R.C.	2018	AVG 095.235-040
288	LIUAN DONGDUN WOOD INDUSTRY	Lu'an city, Anhui province	P.R.C.	2018	AVG 095.235-040
287	UNIBOARD PARTICLEBOARD DIVISION	Val d'Or	CANADA	2018	AVG 075.235-040
286	UNIBOARD PARTICLEBOARD DIVISION	Val d'Or	CANADA	2018	AVG 075.235-040
285	SIA "KRONOSPAN Riga"	Riga	LETTONIA	2018	AVG 150.700-040
284	KRONOSPAN LLC	Eastaboga, AL	U.S.A.	2018	AVG 095.235-040
283	KRONOSPAN LLC	Eastaboga, AL	U.S.A.	2018	AVG 095.235-040
282	KRONOSPAN LLC	Eastaboga, AL	U.S.A.	2018	AVG 095.235-040
281	KRONOSPAN LLC	Eastaboga, AL	U.S.A.	2018	AVG 095.235-040
280	KRONOSPAN LLC	Eastaboga, AL	U.S.A.	2018	AVG 095.235-040
279	KRONOSPAN LLC	Eastaboga, AL	U.S.A.	2018	AVG 095.235-040
278	KRONOSPAN LLC	Eastaboga, AL	U.S.A.	2018	AVG 075.235-040
277	KRONOSPAN LLC	Eastaboga, AL	U.S.A.	2018	AVG 075.235-040
276	KRONOSPAN LLC	Eastaboga, AL	U.S.A.	2018	AVG 075.235-040
275	NOVOPAN DEL ECUADOR	Itulcachi	ECUADOR	2017	AVG 075.235-040
274	NOVOPAN DEL ECUADOR	Itulcachi	ECUADOR	2017	AVG 075.235-040
273	SADEPAN LATINOAMERICANA S.A.	Concepción	ARGENTINA	2017	AVG 075.235-040
272	EGGER HOLZWERKSTOFFE WISMAR	Wismar	GERMANY	2017	AVG 095.235-040
271	SHANDONG HEZE MAOSHENG WOOD	Heze City, Shandong province	P.R.C.	2017	AVG 095.235-040
270	HENAN GALLOWAY WOOD IND.	Zumadian city, Henan province	P.R.C.	2017	AVG 095.235-040
269	BORG MANUFACTURING Pty Ltd.	Oberon	AUSTRALIA	2017	AVG 075.235-040
268	BORG MANUFACTURING Pty Ltd.	Oberon	AUSTRALIA	2017	AVG 075.235-040
267	BORG MANUFACTURING Pty Ltd.	Oberon	AUSTRALIA	2017	AVG 095.235-040
266	BORG MANUFACTURING Pty Ltd.	Oberon	AUSTRALIA	2017	AVG 095.235-040
265	BORG MANUFACTURING Pty Ltd.	Oberon	AUSTRALIA	2017	AVG 095.235-040
264	BORG MANUFACTURING Pty Ltd.	Oberon	AUSTRALIA	2017	AVG 095.235-040
263	BORG MANUFACTURING Pty Ltd.	Oberon	AUSTRALIA	2017	AVG 095.235-040
262	ALLGREEN TIMBER PRODUCTS	Segamat Johor	MALAYSIA	2017	AVG 075.235-040
261	ALLGREEN TIMBER PRODUCTS	Segamat Johor	MALAYSIA	2017	AVG 095.235-040
260	ALLGREEN TIMBER PRODUCTS	Segamat Johor	MALAYSIA	2017	AVG 095.235-040
259	WANHUA (XINYANG) ECOBOARD	Xinyang city, Henan province	P.R.C.	2017	AVG 075.235-040
258	WANHUA (XINYANG) ECOBOARD	Xinyang city, Henan province	P.R.C.	2017	AVG 075.235-040
257	WANHUA (XINYANG) ECOBOARD	Xinyang city, Henan province	P.R.C.	2017	AVG 095.235-040
256	WANHUA (XINYANG) ECOBOARD	Xinyang city, Henan province	P.R.C.	2017	AVG 095.235-040
255	WANHUA (XINYANG) ECOBOARD	Xinyang city, Henan province	P.R.C.	2017	AVG 095.235-040
254	POWERCROP RUSSI S.R.L.	Russi	ITALY	2017	AVG 120.700-040
253	POWERCROP RUSSI S.R.L.	Russi	ITALY	2017	AVG 120.700-040
252	POWERCROP RUSSI S.R.L.	Russi	ITALY	2017	AVG 120.670-040
251	POWERCROP RUSSI S.R.L.	Russi	ITALY	2017	AVG 120.670-040
250	BOLIDEN BERGSOE	Landskrona	SVEZIA	2017	AVE 107
249	HOTOLI GROUP ZHANJIANG RUNBAO	Zhanjiang city, Guandong province	P.R.C.	2016	AVG 095.235-040
248	HOTOLI GROUP ZHANJIANG RUNBAO	Zhanjiang city, Guandong province	P.R.C.	2016	AVG 095.235-040
247	HOTOLI GROUP ZHANJIANG RUNBAO	Zhanjiang city, Guandong province	P.R.C.	2016	AVG 095.235-040
246	HUANING KELIN WOOD IND.	Anqing city, Anhui province	P.R.C.	2016	AVG 095.235-040
245	HUANING KELIN WOOD IND.	Anqing city, Anhui province	P.R.C.	2016	AVG 095.235-040
244	HUANING KELIN WOOD IND.	Anqing city, Anhui province	P.R.C.	2016	AVG 095.235-040



MACCHINE VIBRANTI

VIBRATING MACHINES

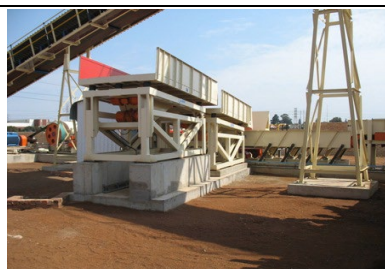
Pos.	Cliente	Località	Paese	Anno	Codice Globus
Item	Customer	Town	Country	Year	Globus code
243	METRO PANEL CO LTD	Bangkok	THAILAND	2016	VFG 08.120-080
242	METRO PANEL CO LTD	Bangkok	THAILAND	2016	VTG 22.80
241	METRO PARTICLE CO LTD	Bangkok	THAILAND	2016	VFG 08.080-055
240	METRO PARTICLE CO LTD	Bangkok	THAILAND	2016	VTG 22.80
239	UNILIN DIVISION PANELS - SPANO	Oostrozebeke	BELGIUM	2016	AVG 095.235-040
238	UNILIN DIVISION PANELS - SPANO	Oostrozebeke	BELGIUM	2016	AVG 095.235-040
237	XIANGHE TIANYA WOOD IND.	Langang city, Hebei province	P.R.C.	2016	AVG 095.235-040
236	XIANGHE TIANYA WOOD IND.	Langang city, Hebei province	P.R.C.	2016	AVG 095.235-040
235	XIANGHE TIANYA WOOD IND.	Langang city, Hebei province	P.R.C.	2016	AVG 095.235-040
234	XIANGHE TIANYA WOOD IND.	Langang city, Hebei province	P.R.C.	2016	AVG 095.235-040
233	HENAN GALLOWAY WOOD IND.	Zumadian city, Henan province	P.R.C.	2016	AVG 095.235-040
232	HENAN GALLOWAY WOOD IND.	Zumadian city, Henan province	P.R.C.	2016	AVG 095.235-040
231	HENAN GALLOWAY WOOD IND.	Zumadian city, Henan province	P.R.C.	2016	AVG 095.235-040
230	FABRYKI MEBLI "FORTE" S.A.	Ostrow Mazowiecka	POLAND	2016	AVG 095.235-040
229	FABRYKI MEBLI "FORTE" S.A.	Ostrow Mazowiecka	POLAND	2016	AVG 095.235-040
228	FABRYKI MEBLI "FORTE" S.A.	Ostrow Mazowiecka	POLAND	2016	AVG 095.235-040
227	FABRYKI MEBLI "FORTE" S.A.	Ostrow Mazowiecka	POLAND	2016	AVG 095.235-040
226	FABRYKI MEBLI "FORTE" S.A.	Ostrow Mazowiecka	POLAND	2016	AVG 095.235-040
225	FABRYKI MEBLI "FORTE" S.A.	Ostrow Mazowiecka	POLAND	2016	AVG 095.235-040
224	PG BISON	Piet Retief	SOUTH AFRICA	2016	AVG 095.235-040
223	SIT - Mauro Saviola Group	Mortara	ITALY	2016	AVG 095.235-040
222	HEVEABOARD BERHAD	Gemas	MALAYSIA	2015	AVG 095.235-040
221	HEVEABOARD BERHAD	Gemas	MALAYSIA	2015	AVG 095.235-040
220	HEVEABOARD BERHAD	Gemas	MALAYSIA	2015	AVG 095.235-040
219	ALLGREEN TIMBER PRODUCTS	Segamat Johor	MALAYSIA	2015	AVG 095.235-040
218	ALLGREEN TIMBER PRODUCTS	Segamat Johor	MALAYSIA	2015	AVG 095.235-040
217	ALLGREEN TIMBER PRODUCTS	Segamat Johor	MALAYSIA	2015	AVG 095.235-040
216	NORBORD EUROPE Ltd.	Inverness	SCOTLAND	2015	AVG 095.235-040
215	HEVEABOARD BERHAD	Gemas	MALAYSIA	2015	AVG 095.235-040
214	TABLEROS LOSAN	Soria	SPAIN	2015	AVG 095.235-040
213	D&R HENDERSON	Benalla	AUSTRALIA	2014	AVG 095.235-040
212	ENGITEC TECHNOLOGIES	Berriane	ALGERIA	2014	AVE 106
211	JSC "URALELEKTROMED"	Verkhnyaya Pyshma	RUSSIA	2014	AVE 101
210	TRASMEC/OSB Poland	Casalbuttano	ITALY	2014	AVG 095.34-40
209	UNILIN DIVISION PANELS - CHIPBOARDS	Wielsbeke	BELGIUM	2014	AVG 095.235-040
208	UNILIN DIVISION PANELS - CHIPBOARDS	Wielsbeke	BELGIUM	2014	AVG 095.235-040
207	KRONOSPAN OSB	Strezelce Opolskie	POLAND	2014	AVG 075.235-040
206	KRONOSPAN OSB	Strezelce Opolskie	POLAND	2014	AVG 075.235-040
205	ENGITEC TECHNOLOGIES	Ciniega de Flores	MEXICO	2014	AVE 105
204	ENGITEC TECHNOLOGIES	Ciniega de Flores	MEXICO	2014	AVE 104
203	STAR PARTICLE BOARD	Narayangonj	BANGLADESH	2014	AVG 55.20.030
202	JASZ PLASZTIK	Jaszbereny	HUNGARY	2014	AVE 200
201	JASZ PLASZTIK	Jaszbereny	HUNGARY	2014	AVE 102
200	KASTAMONU BULGARIA AD	Gorno Sahrane	BULGARIA	2013	AVG 950 x 2350
199	KASTAMONU BULGARIA AD	Gorno Sahrane	BULGARIA	2013	AVG 950 x 2350
198	KRONOSPAN Bolderaja	Bolderaja	LATVIA	2013	AVG 950 x 2350
197	KRONOSPAN GmbH	Sandebeck	GERMANY	2013	AVG 950 x 2350



MACCHINE VIBRANTI

VIBRATING MACHINES

Pos.	Cliente	Località	Paese	Anno	Codice Globus
Item	Customer	Town	Country	Year	Globus code
196	KRONOSPAN GmbH	Sandebeck	GERMANY	2013	AVG 950 x 2350
195	TRASMEC/VYNCKE	Casalbuttano	ITALY	2013	AVG 120.70-60
194	TRASMEC/DIEFFENBACHER	Casalbuttano	ITALY	2013	AVG 120.70-60
193	ENGITEC TECHNOLOGIES	Novate Milanese	ITALY	2013	AVE 101
192	UNILIN DIVISION PANELS - CHIPBOARDS	Wielsbeke	BELGIUM	2013	AVG 950 x 2350
191	SUNGCHANG	Ulsan	KOREA	2013	AVG 950 x 2350
190	SUNGCHANG	Ulsan	KOREA	2013	AVG 950 x 2350
189	SANAYE KIMIA CHOOB GOLESTAN	Gorgan	IRAN	2012	VTG 25.80
188	SANAYE KIMIA CHOOB GOLESTAN	Gorgan	IRAN	2012	VTG 25.80
187	SANAYE KIMIA CHOOB GOLESTAN	Gorgan	IRAN	2012	VFG 09.080-40
186	SANAYE KIMIA CHOOB GOLESTAN	Gorgan	IRAN	2012	VFG 09.080-40
185	SADEPAN LATINOAMERICANA	Conception d.U.	ARGENTINA	2012	AVG 075.235-040
184	KRONOSPAN SEBES SA	Sebes	ROMANIA	2012	AVG 075.235-040
183	SPIK IVERICA/FANTONI	Ivanjica	SERBIA	2012	AVG 075.20-040
182	NOVOPAN DEL ECUADOR	Itulcachi	ECUADOR	2012	AVG 075.235-040
181	KRONOSPAN SEBES SA	Sebes	ROMANIA	2012	AVG 095.235-040
180	KRONOSPAN SEBES SA	Sebes	ROMANIA	2012	AVG 095.235-040
179	KRONOSPAN SEBES SA	Sebes	ROMANIA	2012	AVG 095.235-040
178	NOVOPAN DEL ECUADOR	Itulcachi	ECUADOR	2011	AVG 095.24.40
177	NOVOPAN DEL ECUADOR	Itulcachi	ECUADOR	2011	AVG 095.24.40
176	TRASMEC	Casalbuttano	ITALY	2011	AVG 120.70-40
175	IP ALIMOV MURAT SURATOVICH	Novosibirsk	RUSSIA	2011	AVG 075.235-040
174	IP ALIMOV MURAT SURATOVICH	Novosibirsk	RUSSIA	2011	AVG 075.235-040
173	EMG do Brasil	Curitiba	BRAZIL	2011	VFG 1310/50
172	EMG do Brasil	Curitiba	BRAZIL	2011	VTG 40.40
171	SAIB	Caorso	ITALY	2010	FGG 160.40-40
170	AGLOMERADOS COTOPAXI	Cotopaxi	ECUADOR	2010	VFG 10.80-40
169	AGLOMERADOS COTOPAXI	Cotopaxi	ECUADOR	2010	VTG 40.80
168	NOVOPAN DEL ECUADOR	Itulcachi	ECUADOR	2010	VTG 25.80
167	NOVOPAN DEL ECUADOR	Itulcachi	ECUADOR	2010	VFG 09.080/40
166	NOVOPAN DEL ECUADOR	Itulcachi	ECUADOR	2010	AVG 095.235-040
165	K-SERVICE	Mulheim	GERMANY	2009	AVG 075.25
164	NOVOPAN DEL ECUADOR	Itulcachi	ECUADOR	2009	AVG 075.25
163	STAR PANEL BOARD	Malur	INDIA	2009	AVG 075.25
162	STAR PANEL BOARD	Malur	INDIA	2009	AVG 075.25
161	STAR PANEL BOARD	Malur	INDIA	2009	AVG 075.25
160	FALCONI ENGINEERING	Credaro	ITALY	2009	FGG 075.235-040
159	FALCONI ENGINEERING	Credaro	ITALY	2009	VSG 120.370-2D
158	STAR PANEL BOARD	Malur	INDIA	2009	AVG 100.30
157	STAR PANEL BOARD	Malur	INDIA	2009	AVG 100.30
156	STAR PANEL BOARD	Malur	INDIA	2009	AVG 100.30
155	STAR PANEL BOARD	Malur	INDIA	2009	AVG 100.30
154	STAR PANEL BOARD	Malur	INDIA	2009	AVG 100.30
153	STAR PANEL BOARD	Malur	INDIA	2009	AVG 100.30
152	ALMUS	Tashkent	UZ	2009	FGG 075.235-040
151	ALMUS	Tashkent	UZ	2009	FGG 075.235-040
150	STAR PANEL BOARD	Malur	INDIA	2009	VTG 40.45



MACCHINE VIBRANTI

VIBRATING MACHINES

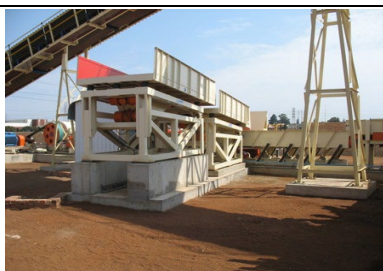
Pos.	Cliente	Località	Paese	Anno	Codice Globus
Item	Customer	Town	Country	Year	Globus code
149	STAR PANEL BOARD	Malur	INDIA	2009	VFG 13.120/85
148	EO2	Malakoff	FRANCE	2008	FGG 100.27-40
147	FOREST ENTERPRISES D.O.O.	Pukovac	SERBIA	2008	VFG 09.060/30
146	MODUL SYSTEME	Laufen	GERMANY	2008	AVG 075.20
145	MODUL SYSTEME	Laufen	GERMANY	2008	AVG 075.20
144	ALFA WOOD	Nevrokopi	GREECE	2008	AVG 140.30
143	SAMEC	Castelverde	ITALY	2008	AVG 100.58
142	LATERAN	Vinkovci	HUNGARY	2007	
141	INSTALMEC	San Giorgio N.	ITALY	2007	AVG 050.12
140	ENERLES	Pivka	SLOVENIA	2007	AVG 055.20
139	CIOP	Vicoforte	ITALY	2007	AVG 100.25
138	MODUL SYSTEME	Laufen/...	GERMANY	2007	AVG 750 X 2000
137	INSTALMEC	San Giorgio N.	ITALY	2007	AVG 160.25
136	XILOPAN	Cigognola	ITALY	2007	AVG 190.30
135	XILOPAN	Cigognola	ITALY	2007	AVG 190.30
134	XILOPAN	Cigognola	ITALY	2007	AVG 190.30
133	MODUL SYSTEME/SPIK IVERICA	-	SERBIA	2007	AVG 140.30
132	K-SERVICE	Muhleim	AUSTRIA	2007	AVG 140.25
131	SPIK IVERICA/FANTONI	Ivanjica	SERBIA	2007	AVG 075.20
130	SPIK IVERICA/FANTONI	Ivanjica	SERBIA	2007	AVG 075.20
129	SPIK IVERICA/FANTONI	Ivanjica	SERBIA	2007	AVG 075.20
128	SAMEC/TEGRA HOLZ & ENERGIE	Domat/Ems	SVIZZERA	2007	AVG 120.67
127	SAMEC/TEGRA HOLZ & ENERGIE	Domat/Ems	SVIZZERA	2007	AVG 120.67
126	ALFAWOOD BULGARIA	Dolni Chiflick	BULGARIA	2007	AVG 075.25
125	ALFAWOOD BULGARIA	Dolni Chiflick	BULGARIA	2007	AVG 075.25
124	WILLIAM TELL	Johannesburg	SOUTH AFRICA	2007	VFG 13.100/50
123	WILLIAM TELL	Johannesburg	SOUTH AFRICA	2007	VTG 22.80
122	WILLIAM TELL	Johannesburg	SOUTH AFRICA	2007	AVG 075.25
121	WILLIAM TELL	Johannesburg	SOUTH AFRICA	2007	AVG 075.25
120	AGROHIMLES COMPANY	Pskov	RUSSIA	2007	AVG 055.20
119	MODUL SYSTEME	Laufen	GERMANY	2007	AVG 055.20
118	MODUL SYSTEME	Laufen	GERMANY	2007	AVG 055.20
117	FORNACI CALCE GRIGOLIN	Ponte della Priula	ITALY	2007	FGG 160.40-40
116	KUPELILER OTOMOTIV	Eskisehir	TURKEY	2007	FGG 095.235-030
115	MODUL SYSTEME ENG.	Laufen	GERMANY	2006	AVG 550x2000
114	MODUL SYSTEME ENG.	Laufen	GERMANY	2006	AVG 550x2000
113	MODUL SYSTEME ENG.	Laufen	GERMANY	2006	AVG 550x2000
112	MODUL SYSTEME ENG.	Laufen	GERMANY	2006	AVG 550x2000
111	PAL / NOVOPAN	Quito	ECUADOR	2006	AVG 750x2500
110	PT. KUTAI TIMBER INDONESIA	Probolinggo	INDONESIA	2006	VFG 14.100/65+WZ
109	PT. KUTAI TIMBER INDONESIA	Probolinggo	INDONESIA	2006	AVG 750x2500
108	PT. KUTAI TIMBER INDONESIA	Probolinggo	INDONESIA	2006	AVG 750x2500
107	PT. KUTAI TIMBER INDONESIA	Probolinggo	INDONESIA	2006	AVG 750x2500
106	PT. KUTAI TIMBER INDONESIA	Probolinggo	INDONESIA	2006	AVG 550x2000
105	PT. KUTAI TIMBER INDONESIA	Probolinggo	INDONESIA	2006	VTG 45.45
104	K-SERVICE/SHIRDI INDUSTRIES	Mumbai	INDIA	2006	AVG 750x2500
103	AMICO DREVO	Oravsky Podzamok	SLOVAKIA	2006	



MACCHINE VIBRANTI

VIBRATING MACHINES

Pos.	Cliente	Località	Paese	Anno	Codice Globus
Item	Customer	Town	Country	Year	Globus code
102	BRAGA	Casalmaggiore	ITALY	2006	
101	BRAGA	Casalmaggiore	ITALY	2006	
100	BRAGA	Casalmaggiore	ITALY	2006	
99	DOK	Cherkassy	UCRAINA	2006	AVG 750x2500
98	ENERLES	Pivka	SLOVENIA	2006	AVG 750x2500
97	MODUL SYSTEME	Laufen	GERMANY	2006	AVG 550 X 2000
96	MODUL SYSTEME	Laufen	GERMANY	2006	AVG 550 X 2000
95	MODUL SYSTEME	Laufen	GERMANY	2006	AVG 550 X 2000
94	MODUL SYSTEME	Laufen	GERMANY	2006	AVG 550 X 2000
93	ENERLES	Pivka	SLOVENIA	2006	AVG 550 X 2000
92	ENERLES	Pivka	SLOVENIA	2006	AVG 550 X 2000
91	MODUL SYSTEME	Laufen	GERMANY	2006	AVG 550 X 2000
90	MODUL SYSTEME	Laufen	GERMANY	2006	AVG 550 X 2000
89	MODUL SYSTEME	Laufen	GERMANY	2006	AVG 550 X 2000
88	INDUSTRIA CALCE CASERTANA	Casagiove	ITALY	2006	AVG 075.25 + TM
87	K.SERVICE	Muhleim	AUSTRIA	2005	VF 20.75
86	SUNLIGHT WOOD PRODUCTS	Karachi	PAKISTAN	2005	VFG 13.120/65
85	TEVERPAN AGAC SANAYII A.S.	Istanbul	TURKEY	2005	AVG 750x2500
84	PAL / ATC PANELS	Moncure	USA	2005	AVG 750x2000
83	INVERNIZZI	Solarolo Rainerio	ITALY	2005	AVG 750x2500
82	SADEPAN LATINOAMERICANA	Conception d.U.	ARGENTINA	2004	VF 25.10
81	SAIB	Caorso	ITALY	2004	
80	KLINKERT	Guesney	UK	2004	VF 20.5
79	BRAGA	Casalmaggiore	ITALY	2004	
78	RAFOS	Braila	ROMANIA	2004	
77	CHRIS RANDLE	Melbourne	AUSTRALIA	2004	
76	KLINKERT	Guesney	UK	2004	VF 20.5
75	P.G. BISON	Mpumalanga	SOUTH AFRICA	2003	
74	FALCO	Pomposa	ITALY	2003	VF 20.7
73	FALCO	Pomposa	ITALY	2003	VF 20.7
72	METSO PB / KRASNYJ OKTJABR	Tyumen	RUSSIA	2003	VF 20.5
71	SADEPAN LATINOAMERICANA	Conception d.U.	ARGENTINA	2003	VF 15.5
70	SIT - Mauro Saviola Group	Mortara	ITALY	2002	
69	SAVOIE PAN GROUPE	Tournon	FRANCE	2002	VFG 14.10/80+WZ
68	KLINKERT-EVERGREEN	Parit Raja	MALAYSIA	2002	
67	KLINKERT-EVERGREEN	Parit Raja	MALAYSIA	2002	
66	BALKAN EXPORT	Thessaloniki-Veria	GREECE	2002	
65	TAFISA SONAE	White River	SOUTH AFRICA	2001	
64	SAMEC/BIOMASSE ITALIA	Crotone	ITALY	2001	VFG 10.10
63	SAIB	Caorso	ITALY	2001	
62	SUNLIGHT WOOD PRODUCTS	Karachi	PAKISTAN	2001	VFG 13.12/65+WZ
61	SAMEC/SADEPAN CHIMICA	Viadana	ITALY	2001	VFG 40.50
60	SAMEC /SADEPAN CHIMICA	Viadana	ITALY	2001	VFG 40.50
59	XILOPAN	Cigognola	ITALY	2001	
58	XILOPAN	Cigognola	ITALY	2001	
57	LIGNATECH FRANCHE COMTE	Our	FRANCE	2001	VFG 10.12/65+WZ
56	LIGNATECH FRANCHE COMTE	Our	FRANCE	2001	VTG 40.45



MACCHINE VIBRANTI

VIBRATING MACHINES

Pos.	Cliente	Località	Paese	Anno	Codice Globus
Item	Customer	Town	Country	Year	Globus code
55	INVERNIZZI	Solarolo Rainerio	ITALY	2001	VF 15.4
54	KLINKERT	Altheim	AUSTRIA	2001	
53	DEVREKTAS	Devrek	TURKEY	2000	
52	DEVREKTAS	Devrek	TURKEY	2000	
51	SUNLIGHT WOOD PRODUCTS	Karachi	PAKISTAN	2000	VF 25.12
50	SILLA	Sustinente	ITALY	2000	
49	VERPAN	Vinovo	ITALY	2000	
48	SILLA	Sustinente	ITALY	2000	
47	PANDA	Villafranca	ITALY	2000	VF 20.14
46	SILLA	Sustinente	ITALY	2000	
45	SAMEC./DANIELI	Buttrio	ITALY	2000	VF 42.08
44	VERNEA	Vinovo	ITALY	2000	VF 30.14
43	VERNEA	Vinovo	ITALY	2000	VTG 40.45
42	SADEPAN LATINOAMERICANA	Concepcion	ARGENTINA	2000	
41	VERNEA	Vinovo	ITALY	2000	VTG 40.45
40	SIT - Mauro Saviola Group	Mortara	ITALY	1999	
39	SIT - Mauro Saviola Group	Mortara	ITALY	1999	
38	SIT - Mauro Saviola Group	Mortara	ITALY	1999	
37	PANDA	Villafranca	ITALY	1998	VF 20.5
36	SAIB	Caorso	ITALY	1998	VF 15.5
35	SAIB	Caorso	ITALY	1998	
34	SAIB	Caorso	ITALY	1998	
33	SAIB	Caorso	ITALY	1998	VF 15.5
32	KLINKERT	Waldkraiburg	GERMANY	1999	
31	KLINKERT	Waldkraiburg	GERMANY	1999	
30	KLINKERT	Waldkraiburg	GERMANY	1999	
29	KLINKERT	Waldkraiburg	GERMANY	1999	
28	KLINKERT	Waldkraiburg	GERMANY	1999	
27	VERNEA	Vinovo	ITALY	1998	
26	PANDA	Villafranca	ITALY	1997	VF 20.8
25	PANDA	Villafranca	ITALY	1997	VF 20.5
24	PANDA	Villafranca	ITALY	1997	VF 20.10
23	SACIC LEGNO	Mortara	ITALY	1997	
22	MEDASPAN	Airuno	ITALY	1997	
21	PANDA	Villafranca	ITALY	1996	VF 20.5
20	VERNEA	Vinovo	ITALY	1996	
19	HELI ENGINEERING/CHIPBOARD	Umtata	SOUTH AFRICA	1996	
18	SIT - Mauro Saviola Group	Mortara	ITALY	1995	
17	LIMBA KAYU UTAMA	Jambi	INDONESIA	1995	
16	LIMBA KAYU UTAMA	Jambi	INDONESIA	1995	
15	VERNEA	Vinovo	ITALY	1994	
14	VERNEA	Vinovo	ITALY	1993	
13	VERNEA	Vinovo	ITALY	1993	
12	IPAS	Solarolo Rainerio	ITALY	1992	
11	KLINKERT / DAIICHI	Nonthaburi	THAILAND	1991	
10	KLINKERT / DAIICHI	Nonthaburi	THAILAND	1991	
9	PANDA	Villafranca	ITALY	1991	



MACCHINE VIBRANTI
VIBRATING MACHINES

Pos.	Cliente	Località	Paese	Anno	Codice Globus
Item	Customer	Town	Country	Year	Globus code
8	PANDA	Villafranca	ITALY	1991	
7	HELI ENGINEERING/CHIPBOARD	Umtata	SOUTH AFRICA	1990	
6	HELI ENGINEERING/CHIPBOARD	Umtata	SOUTH AFRICA	1990	
5	SILLA	Sustinente	ITALY	1990	
4	MADONNINA	Borgoforte	ITALY	1989	
3	MADONNINA	Borgoforte	ITALY	1989	
2	SACIC LEGNO	Mortara	ITALY	1988	
1	SIA	Viadana	ITALY	1988	



RECHIPPERS

Pos.	Cliente	Località	Paese	Anno	Codice Globus
Item	Customer	Town	Country	Year	Globus code
11	CITADEL INTL Trading LLC	Dubai Media City	DUBAI, UAE	2022	RMG 600.75-3
10	GREENLAM	Andhra Pradesh	INDIA	2022	RMG 600.75-3
9	BAAHU PANELS (GREENPLY GROUP)	Sherpura	INDIA	2021	RMG 600.75-3
8	TABLEROS HISPANOS	Lugo	SPAIN	2021	RMG 600.75-3
7	METRO PARTICLE CO. LTD	Bangkok	THAILAND	2016	RMG 600.75-2
6	BORG MANUFACTURING PTY	Oberon	AUSTRALIA	2016	RMG 600.75-3
5	WOOD RUBBER GROUP	Quang Tri	VIETNAM	2014	RMG 600.75-3
4	CMC TEXPAN	Colzate	ITALY	2013	RMG 600.72-2
3	LESONIT	Ilirska Bistrica	SLOVENIA	2002	RMG 600.75
2	FANTONI	Osoppo	ITALY	2001	RMG 600.75
1	SAVOIE PAN GROUPE	Tournon	FRANCE	2001	RMG 600.75



SEPARATORI DINAMICI
HEAVY PARTICLE SEPARATORS

Pos. Cliente	Località	Paese	Anno	Codice Globus
Item Customer	Town	Country	Year	Globus code
295 FUREN GROUP FORESTRY INDUSTRY CO.	Shaowu City, Nanping City	P.R.C.	2024	ACG 800-T
294 COMPLY INDUSTRIES LTD.	Nakuru	KENYA	2024	ACG 600-T
293 JIANGSU HUABAN NEW MATERIAL TECHNOLOGY	Suqian City, Jiangsu Province	P.R.C.	2024	ACG 800-T
292 JIANGSU HUABAN NEW MATERIAL TECHNOLOGY	Suqian City, Jiangsu Province	P.R.C.	2024	ACG 800-T
291 JIANGSU HUABAN NEW MATERIAL TECHNOLOGY	Suqian City, Jiangsu Province	P.R.C.	2024	ACG 800-T
290 JIANGSU HUABAN NEW MATERIAL TECHNOLOGY	Suqian City, Jiangsu Province	P.R.C.	2024	ACG 800-T
289 JIANGSU HUABAN NEW MATERIAL TECHNOLOGY	Suqian City, Jiangsu Province	P.R.C.	2024	ACG 800-T
288 YAAN HUILONG NEW MATERIALS	YaAn industry zone, Sichuan province	P.R.C.	2023	ACG 800-T
287 YAAN HUILONG NEW MATERIALS	YaAn industry zone, Sichuan province	P.R.C.	2023	ACG 800-T
286 YAAN HUILONG NEW MATERIALS	YaAn industry zone, Sichuan province	P.R.C.	2023	ACG 800-T
285 YAAN HUILONG NEW MATERIALS	YaAn industry zone, Sichuan province	P.R.C.	2023	ACG 800-T
284 YAAN HUILONG NEW MATERIALS	YaAn industry zone, Sichuan province	P.R.C.	2023	ACG 800-T
283 YAAN HUILONG NEW MATERIALS	YaAn industry zone, Sichuan province	P.R.C.	2023	ACG 800-T
282 YAAN HUILONG NEW MATERIALS	YaAn industry zone, Sichuan province	P.R.C.	2023	ACG 800-T
281 YAAN HUILONG NEW MATERIALS	YaAn industry zone, Sichuan province	P.R.C.	2023	ACG 800-T
280 HUBEI NINGFENG	HuangGang city, Hubei province	P.R.C.	2023	ACG 800-T
279 HUBEI NINGFENG	HuangGang city, Hubei province	P.R.C.	2023	ACG 800-T
278 HUBEI NINGFENG	HuangGang city, Hubei province	P.R.C.	2023	ACG 800-T
277 HUBEI NINGFENG	HuangGang city, Hubei province	P.R.C.	2023	ACG 800-T
276 HUBEI NINGFENG	HuangGang city, Hubei province	P.R.C.	2023	ACG 800-T
275 HUBEI NINGFENG	HuangGang city, Hubei province	P.R.C.	2023	ACG 800-T
274 HUBEI NINGFENG	HuangGang city, Hubei province	P.R.C.	2023	ACG 800-T
273 HUBEI NINGFENG	HuangGang city, Hubei province	P.R.C.	2023	ACG 800-T
272 HUBEI NINGFENG	HuangGang city, Hubei province	P.R.C.	2023	ACG 800-T
271 HUBEI NINGFENG	HuangGang city, Hubei province	P.R.C.	2023	ACG 800-T
270 GUANGXI KAILI NEW MATERIAL	Hechi city, Guangxi Province	P.R.C.	2023	ACG 800-T
269 XILOPAN S.P.A.	Cigognola	ITALY	2023	ACG 800-T
268 JINGDE BAISHIDA NEW MATERIAL CO	Xuancheng City, AnHui Province	P.R.C.	2023	ACG 800-T
267 JINGDE BAISHIDA NEW MATERIAL CO	Xuancheng City, AnHui Province	P.R.C.	2023	ACG 800-T
266 JINGDE BAISHIDA NEW MATERIAL CO	Xuancheng City, AnHui Province	P.R.C.	2023	ACG 800-T
265 JINGDE BAISHIDA NEW MATERIAL CO	Xuancheng City, AnHui Province	P.R.C.	2023	ACG 800-T
264 JINGDE BAISHIDA NEW MATERIAL CO	Xuancheng City, AnHui Province	P.R.C.	2023	ACG 800-T
263 JINGDE BAISHIDA NEW MATERIAL CO	Xuancheng City, AnHui Province	P.R.C.	2023	ACG 800-T
262 JINGDE BAISHIDA NEW MATERIAL CO	Xuancheng City, AnHui Province	P.R.C.	2023	ACG 800-T
261 JINGDE BAISHIDA NEW MATERIAL CO	Xuancheng City, AnHui Province	P.R.C.	2023	ACG 800-T
260 JINGDE BAISHIDA NEW MATERIAL CO	Xuancheng City, AnHui Province	P.R.C.	2023	ACG 800-T
259 JINGDE BAISHIDA NEW MATERIAL CO	Xuancheng City, AnHui Province	P.R.C.	2023	ACG 800-T
258 GUANGXI KAILI NEW MATERIAL	Hechi city, Guangxi Province	P.R.C.	2023	ACG 800-T
257 GUANGXI KAILI NEW MATERIAL	Hechi city, Guangxi Province	P.R.C.	2023	ACG 800-T
256 GUANGXI KAILI NEW MATERIAL	Hechi city, Guangxi Province	P.R.C.	2023	ACG 800-T
255 ANSHAN ZHONGYUAN MDF PLANT	Anshan city, Liaoning province	P.R.C.	2023	ACG 800-T
254 ANSHAN ZHONGYUAN MDF PLANT	Anshan city, Liaoning province	P.R.C.	2023	ACG 800-T
253 ANSHAN ZHONGYUAN MDF PLANT	Anshan city, Liaoning province	P.R.C.	2023	ACG 800-T
252 ANSHAN ZHONGYUAN MDF PLANT	Anshan city, Liaoning province	P.R.C.	2023	ACG 800-T
251 ANHUI JINGXUAN NEW MATERIAL	Suzhou city, Anhui province	P.R.C.	2023	ACG 800-T
250 ANHUI JINGXUAN NEW MATERIAL	Suzhou city, Anhui province	P.R.C.	2023	ACG 800-T
249 ANHUI JINGXUAN NEW MATERIAL	Suzhou city, Anhui province	P.R.C.	2023	ACG 800-T
248 ANHUI JINGXUAN NEW MATERIAL	Suzhou city, Anhui province	P.R.C.	2023	ACG 800-T
247 ANHUI JINGXUAN NEW MATERIAL	Suzhou city, Anhui province	P.R.C.	2023	ACG 800-T
246 ANHUI JINGXUAN NEW MATERIAL	Suzhou city, Anhui province	P.R.C.	2023	ACG 800-T
245 ANHUI JINGXUAN NEW MATERIAL	Suzhou city, Anhui province	P.R.C.	2023	ACG 800-T



SEPARATORI DINAMICI
HEAVY PARTICLE SEPARATORS

Pos. Cliente	Località	Paese	Anno	Codice Globus
Item Customer	Town	Country	Year	Globus code
244 ANHUI JINGXUAN NEW MATERIAL	Suzhou city, Anhui province	P.R.C.	2023	ACG 800-T
243 SHANDONG NUOBODE NEW MATERIAL	Linyi city, Shandong province	P.R.C.	2023	ACG 800-T
242 SHANDONG NUOBODE NEW MATERIAL	Linyi city, Shandong province	P.R.C.	2023	ACG 800-T
241 SHANDONG NUOBODE NEW MATERIAL	Linyi city, Shandong province	P.R.C.	2023	ACG 800-T
240 NEARKUDOS (TIELING) HIGH-TECH MATERIALS	Tieling city, Liaoning province	P.R.C.	2023	ACG 800-T
239 NEARKUDOS (TIELING) HIGH-TECH MATERIALS	Tieling city, Liaoning province	P.R.C.	2023	ACG 800-T
238 NEARKUDOS (TIELING) HIGH-TECH MATERIALS	Tieling city, Liaoning province	P.R.C.	2023	ACG 800-T
237 NEARKUDOS (TIELING) HIGH-TECH MATERIALS	Tieling city, Liaoning province	P.R.C.	2023	ACG 800-T
236 GUANGXI QUNYI NEW MATERIAL	Laibin city, Guangxi province	P.R.C.	2023	ACG 800-T
235 GUANGXI QUNYI NEW MATERIAL	Laibin city, Guangxi province	P.R.C.	2023	ACG 800-T
234 GUANGXI QUNYI NEW MATERIAL	Laibin city, Guangxi province	P.R.C.	2023	ACG 800-T
233 GUANGXI QUNYI NEW MATERIAL	Laibin city, Guangxi province	P.R.C.	2023	ACG 800-T
232 GUANGXI QUNYI NEW MATERIAL	Laibin city, Guangxi province	P.R.C.	2023	ACG 800-T
231 YILDIZ ENTEGRE A.Ş.	Uzunbey, Kartepe - Kocaeli	TURKEY	2023	ACG 600-T
230 JINMU MEIJIA	Tangshan city, Hebei province	P.R.C.	2023	ACG 800-T
229 JINMU MEIJIA	Tangshan city, Hebei province	P.R.C.	2023	ACG 800-T
228 JINMU MEIJIA	Tangshan city, Hebei province	P.R.C.	2023	ACG 800-T
227 YUNJING FEILIN (PU'ER) NEW MATERIALS	Pu'er City, Yunnan province	P.R.C.	2023	ACG 800-T
226 YUNJING FEILIN (PU'ER) NEW MATERIALS	Pu'er City, Yunnan province	P.R.C.	2023	ACG 800-T
225 YUNJING FEILIN (PU'ER) NEW MATERIALS	Pu'er City, Yunnan province	P.R.C.	2023	ACG 800-T
224 YUNJING FEILIN (PU'ER) NEW MATERIALS	Pu'er City, Yunnan province	P.R.C.	2023	ACG 800-T
223 CHENGDE SENXI WOOD INDUSTRY	Chengde city, Hebei province	P.R.C.	2022	ACG 800-T
222 TAIHE DONGDUN WOOD INDUSTRY	Fuyang city, Anhui province	P.R.C.	2022	ACG 800-T
221 TAIHE DONGDUN WOOD INDUSTRY	Fuyang city, Anhui province	P.R.C.	2022	ACG 800-T
220 HUBEI DONGLIN NEW MATERIAL	Xiaogan city, Hubei province	P.R.C.	2022	ACG 800-T
219 HUBEI DONGLIN NEW MATERIAL	Xiaogan city, Hubei province	P.R.C.	2022	ACG 800-T
218 HUBEI DONGLIN NEW MATERIAL	Xiaogan city, Hubei province	P.R.C.	2022	ACG 800-T
217 HUBEI DONGLIN NEW MATERIAL	Xiaogan city, Hubei province	P.R.C.	2022	ACG 800-T
216 HUBEI DONGLIN NEW MATERIAL	Xiaogan city, Hubei province	P.R.C.	2022	ACG 800-T
215 HUBEI DONGLIN NEW MATERIAL	Xiaogan city, Hubei province	P.R.C.	2022	ACG 800-T
214 GUANGXI YUANFENG NEW MATERIAL	Nanning city, Guangxi province	P.R.C.	2022	ACG 800-T
213 GUANGXI YUANFENG NEW MATERIAL	Nanning city, Guangxi province	P.R.C.	2022	ACG 800-T
212 GUANGXI YUANFENG NEW MATERIAL	Nanning city, Guangxi province	P.R.C.	2022	ACG 800-T
211 HEBEI JIANFENG WOOD INDUSTRY	Tangshan city, Hebei province	P.R.C.	2022	ACG 800-T
210 HEBEI JIANFENG WOOD INDUSTRY	Tangshan city, Hebei province	P.R.C.	2022	ACG 800-T
209 HEBEI JIANFENG WOOD INDUSTRY	Tangshan city, Hebei province	P.R.C.	2022	ACG 800-T
208 HEBEI JIANFENG WOOD INDUSTRY	Tangshan city, Hebei province	P.R.C.	2022	ACG 800-T
207 SANHUAN HUALAN	Chibi city, Hubei Province	P.R.C.	2022	ACG 800-T
206 SANHUAN HUALAN	Chibi city, Hubei Province	P.R.C.	2022	ACG 800-T
205 YAAN HUILONG NEW MATERIALS	YaAn industry zone, Sichuan province	P.R.C.	2022	ACG 800-T
204 JINYU TIANTAN	Tangshan city, Hebei Province	P.R.C.	2022	ACG 800-T
203 JINYU TIANTAN	Tangshan city, Hebei Province	P.R.C.	2022	ACG 800-T
202 GREENLAM	Andhra Pradesh	INDIA	2022	ACG 600-T
201 GREENLAM	Andhra Pradesh	INDIA	2022	ACG 600-T
200 GREENLAM	Andhra Pradesh	INDIA	2022	ACG 800-T
199 GREENLAM	Andhra Pradesh	INDIA	2022	ACG 800-T
198 GREENLAM	Andhra Pradesh	INDIA	2022	ACG 800-T
197 HUBEI NINGFENG	HuangGang city, Hubei province	P.R.C.	2022	ACG 800-T
196 HUBEI NINGFENG	HuangGang city, Hubei province	P.R.C.	2022	ACG 800-T
195 HUBEI NINGFENG	HuangGang city, Hubei province	P.R.C.	2022	ACG 800-T
194 HUBEI NINGFENG	HuangGang city, Hubei province	P.R.C.	2022	ACG 800-T



SEPARATORI DINAMICI
HEAVY PARTICLE SEPARATORS

Pos. Cliente	Località	Paese	Anno	Codice Globus
Item Customer	Town	Country	Year	Globus code
193 HUBEI NINGFENG	HuangGang city, Hubei province	P.R.C.	2022	ACG 800-T
192 HUBEI NINGFENG	HuangGang city, Hubei province	P.R.C.	2022	ACG 800-T
191 HUBEI NINGFENG	HuangGang city, Hubei province	P.R.C.	2022	ACG 800-T
190 HUBEI NINGFENG	HuangGang city, Hubei province	P.R.C.	2022	ACG 800-T
189 HUBEI NINGFENG	HuangGang city, Hubei province	P.R.C.	2022	ACG 800-T
188 HUBEI NINGFENG	HuangGang city, Hubei province	P.R.C.	2022	ACG 800-T
187 ANHUI WANQING BAMBOO INDUSTRY	Liuan city, Anhui province	P.R.C.	2022	ACG 800-T
186 GUANGXI LUBANG NEW MATERIAL	Laibin city, Guangxi province	P.R.C.	2022	ACG 800-T
185 GUANGXI LUBANG NEW MATERIAL	Laibin city, Guangxi province	P.R.C.	2022	ACG 800-T
184 GUANGXI LUBANG NEW MATERIAL	Laibin city, Guangxi province	P.R.C.	2022	ACG 800-T
183 GUANGXI LUBANG NEW MATERIAL	Laibin city, Guangxi province	P.R.C.	2022	ACG 800-T
182 PT. KUTAI TIMBER INDONESIA	Probolinggo	INDONESIA	2022	ACG 600-T
181 GALLOWAY GROUP (DINGYUAN)	Dingyuan, Anhui province	P.R.C.	2022	ACG 600-T
180 GALLOWAY GROUP (DINGYUAN)	Dingyuan, Anhui province	P.R.C.	2022	ACG 600-T
179 GALLOWAY GROUP (DINGYUAN)	Dingyuan, Anhui province	P.R.C.	2022	ACG 600-T
178 GALLOWAY GROUP (DINGYUAN)	Dingyuan, Anhui province	P.R.C.	2022	ACG 800-T
177 GALLOWAY GROUP (DINGYUAN)	Dingyuan, Anhui province	P.R.C.	2022	ACG 800-T
176 GALLOWAY GROUP (DINGYUAN)	Dingyuan, Anhui province	P.R.C.	2022	ACG 800-T
175 GALLOWAY GROUP (DINGYUAN)	Dingyuan, Anhui province	P.R.C.	2022	ACG 800-T
174 GALLOWAY GROUP (DINGYUAN)	Dingyuan, Anhui province	P.R.C.	2022	ACG 800-T
173 GALLOWAY GROUP (DINGYUAN)	Zumadian city, Henan province	P.R.C.	2022	ACG 800-T
172 GALLOWAY GROUP (DINGYUAN)	Zumadian city, Henan province	P.R.C.	2022	ACG 800-T
171 GALLOWAY GROUP (DINGYUAN)	Zumadian city, Henan province	P.R.C.	2022	ACG 800-T
170 GALLOWAY GROUP (DINGYUAN)	Zumadian city, Henan province	P.R.C.	2022	ACG 800-T
169 GALLOWAY GROUP (DINGYUAN)	Zumadian city, Henan province	P.R.C.	2022	ACG 800-T
168 LUONING SANHUAN	Luoyang city, Henan province	P.R.C.	2022	ACG 800-T
167 LAMINEX GROUP PTY LTD	Dardanup	AUSTRALIA	2022	ACG 600-T
166 ANSHAN ZHONGYUAN MDF PLANT	Anshan city, Liaoning province	P.R.C.	2022	ACG 800-T
165 BERNECK S.A.	Curitibanos	BRAZIL	2022	ACG 600-T
164 BERNECK S.A.	Curitibanos	BRAZIL	2022	ACG 600-T
163 BERNECK S.A.	Curitibanos	BRAZIL	2022	ACG 800-T
162 BERNECK S.A.	Curitibanos	BRAZIL	2022	ACG 800-T
161 BERNECK S.A.	Curitibanos	BRAZIL	2022	ACG 800-T
160 BERNECK S.A.	Curitibanos	BRAZIL	2022	ACG 800-T
159 ANHUI LIUAN YEJI LIREN WOOD INDUSTRY	Liuan city, Anhui Province	P.R.C.	2021	ACG 800-T
158 TANGXIAN HUIYIN WOOD INDUSTRY	Baoding city, Hebei province	P.R.C.	2021	ACG 800-T
157 BAZHONG JIANFENG NEW MATERIAL	Bazhong city, Sichuan province	P.R.C.	2021	ACG 800-T
156 BAZHONG JIANFENG NEW MATERIAL	Bazhong city, Sichuan province	P.R.C.	2021	ACG 800-T
155 TABLEROS HISPANOS	Lugo	SPAIN	2021	ACG 800-T
154 LAOHEKOU DINGFENG WOOD	Laohekou city, Xiangyang, Hubei	P.R.C.	2021	ACG 800-T
153 LAOHEKOU DINGFENG WOOD	Laohekou city, Xiangyang, Hubei	P.R.C.	2021	ACG 800-T
152 LAOHEKOU DINGFENG WOOD	Laohekou city, Xiangyang, Hubei	P.R.C.	2021	ACG 800-T
151 ANSHAN ZHONGYUAN MDF PLANT	Anshan city, Liaoning province	P.R.C.	2021	ACG 800-T
150 TABLEROS HISPANOS	Lugo	SPAIN	2020	ACG 600-T
149 TABLEROS HISPANOS	Lugo	SPAIN	2020	ACG 600-T
148 SHANGQIU DINGFENG WOOD	Shangqiu city, Henan province	P.R.C.	2020	ACG 800-T
147 BAZHONG JIANFENG NEW MATERIAL	Bazhong city, Sichuan province	P.R.C.	2020	ACG 800-T
146 BAZHONG JIANFENG NEW MATERIAL	Bazhong city, Sichuan province	P.R.C.	2020	ACG 800-T



SEPARATORI DINAMICI
HEAVY PARTICLE SEPARATORS

Pos. Cliente	Località	Paese	Anno	Codice Globus
Item Customer	Town	Country	Year	Globus code
145 BAZHONG JIANFENG NEW MATERIAL	Bazhong city, Sichuan province	P.R.C.	2020	ACG 800-T
144 CHENGDE SENXI WOOD INDUSTRY	Chengde city, Hebei province	P.R.C.	2020	ACG 600-T
143 CHENGDE SENXI WOOD INDUSTRY	Chengde city, Hebei province	P.R.C.	2020	ACG 800-T
142 CHENGDE SENXI WOOD INDUSTRY	Chengde city, Hebei province	P.R.C.	2020	ACG 800-T
141 CHENGDE SENXI WOOD INDUSTRY	Chengde city, Hebei province	P.R.C.	2020	ACG 800-T
140 LIAONING NIER KEDA ENVIRONMENTAL	Tieling city, Liaoning province	P.R.C.	2020	ACG 800-T
139 LIAONING NIER KEDA ENVIRONMENTAL	Tieling city, Liaoning province	P.R.C.	2020	ACG 800-T
138 LIAONING NIER KEDA ENVIRONMENTAL	Tieling city, Liaoning province	P.R.C.	2020	ACG 800-T
137 LIUAN DONGDUN WOOD INDUSTRY	Lu'an city, Anhui province	P.R.C.	2020	ACG 800-T
136 ANSHAN ZHONGYUAN MDF PLANT	Anshan city, Liaoning province	P.R.C.	2020	ACG 800-T
135 YAAN HUILONG NEW MATERIALS	YaAn industry zone, Sichuan province	P.R.C.	2020	ACG 800-T
134 YAAN HUILONG NEW MATERIALS	YaAn industry zone, Sichuan province	P.R.C.	2020	ACG 800-T
133 YAAN HUILONG NEW MATERIALS	YaAn industry zone, Sichuan province	P.R.C.	2020	ACG 800-T
132 YAAN HUILONG NEW MATERIALS	YaAn industry zone, Sichuan province	P.R.C.	2020	ACG 800-T
131 RIZHAO OSBONE DECORATION MATERIAL	Rizhao city, Shandong province	P.R.C.	2020	ACG 800-T
130 RIZHAO OSBONE DECORATION MATERIAL	Rizhao city, Shandong province	P.R.C.	2020	ACG 800-T
129 TANGXIAN HUIYIN WOOD INDUSTRY	Baoding city, Hebei province	P.R.C.	2019	ACG 800-T
128 NORBORD EUROPE Ltd.	Genk	BELGIUM	2019	ACG 800-T
127 INDUNOR S.A.	La Escondida - Chaco	ARGENTINA	2019	ACG 600-T
126 INDUNOR S.A.	La Escondida - Chaco	ARGENTINA	2019	ACG 600-T
125 SONAE ARAUCO SA	Estación Linares-Baeza (Jaen)	SPAIN	2019	ACG 800-T
124 HEBEI SHENGAOSONG WOOD INDUSTRY	LuanNan county, Hebei province	P.R.C.	2019	ACG 800-T
123 HEBEI SHENGAOSONG WOOD INDUSTRY	LuanNan county, Hebei province	P.R.C.	2019	ACG 800-T
122 HEBEI SHENGAOSONG WOOD INDUSTRY	LuanNan county, Hebei province	P.R.C.	2019	ACG 800-T
121 OKURA INDUSTRIAL	Mitoyo-shi, Kagawa-ken	JAPAN	2019	ACG 800-T
120 OKURA INDUSTRIAL	Mitoyo-shi, Kagawa-ken	JAPAN	2019	ACG 800-T
119 LINYI XINGANG	Linyi city, Shandong province	P.R.C.	2018	ACG 800-T
118 SHANDONG FENGYUAN	Zaozhuang city, Shandong province	P.R.C.	2018	ACG 800-T
117 SHANDONG FENGYUAN	Zaozhuang city, Shandong province	P.R.C.	2018	ACG 800-T
116 SHANDONG FENGYUAN	Zaozhuang city, Shandong province	P.R.C.	2018	ACG 800-T
115 JIANGSU XINDONGFANG PANEL BOARD	Changsu City, Jiangsu province	P.R.C.	2018	ACG 800-T
114 FINSA	Cella Teruel	SPAIN	2018	ACG 800-T
113 WANHUA ECOBOARD	Beijing city, Beijing province	P.R.C.	2018	ACG 600-T
112 WANHUA ECOBOARD	Beijing city, Beijing province	P.R.C.	2018	ACG 600-T
111 WANHUA ECOBOARD	Beijing city, Beijing province	P.R.C.	2018	ACG 600-T
110 WANHUA ECOBOARD	Beijing city, Beijing province	P.R.C.	2018	ACG 600-T
109 WANHUA ECOBOARD (XINYANG)	Xinyang city, Henan province	P.R.C.	2018	ACG 600-T
108 WANHUA ECOBOARD (XINYANG)	Xinyang city, Henan province	P.R.C.	2018	ACG 600-T
107 LIUAN DONGDUN WOOD INDUSTRY	Lu'an city, Anhui province	P.R.C.	2018	ACG 800-T
106 LIUAN DONGDUN WOOD INDUSTRY	Lu'an city, Anhui province	P.R.C.	2018	ACG 800-T
105 LIUAN DONGDUN WOOD INDUSTRY	Lu'an city, Anhui province	P.R.C.	2018	ACG 800-T
104 UNIBOARD PARTICLEBOARD DIVISION	Val d'Or	CANADA	2018	ACG 600-T
103 UNIBOARD PARTICLEBOARD DIVISION	Val d'Or	CANADA	2018	ACG 600-T
102 KRONOSPAN LLC	Eastaboga, AL	U.S.A.	2018	ACG 800-T
101 KRONOSPAN LLC	Eastaboga, AL	U.S.A.	2018	ACG 800-T
100 KRONOSPAN LLC	Eastaboga, AL	U.S.A.	2018	ACG 800-T
99 KRONOSPAN LLC	Eastaboga, AL	U.S.A.	2018	ACG 800-T



SEPARATORI DINAMICI
HEAVY PARTICLE SEPARATORS

Pos. Cliente	Località	Paese	Anno	Codice Globus
Item Customer	Town	Country	Year	Globus code
98 KRONOSPAN LLC	Eastaboga, AL	U.S.A.	2018	ACG 800-T
97 KRONOSPAN LLC	Eastaboga, AL	U.S.A.	2018	ACG 800-T
96 KRONOSPAN LLC	Eastaboga, AL	U.S.A.	2018	ACG 600-T
95 KRONOSPAN LLC	Eastaboga, AL	U.S.A.	2018	ACG 600-T
94 KRONOSPAN LLC	Eastaboga, AL	U.S.A.	2018	ACG 600-T
93 NOVOPAN DEL ECUADOR	Itulcachi	ECUADOR	2017	ACG 600-T
92 NOVOPAN DEL ECUADOR	Itulcachi	ECUADOR	2017	ACG 600-T
91 SADEPAN LATINOAMERICANA S.A.	Concepción	ARGENTINA	2017	ACG 600-T
90 SADEPAN LATINOAMERICANA S.A.	Concepción	ARGENTINA	2017	ACG 600-T
89 EGGER HOLZWERKSTOFFE WISMAR	Wismar	GERMANY	2017	ACG 800-T
88 SHANDONG HEZE MAOSHENG WOOD	Heze City, Shandong province	CHINA	2017	ACG 800-T
87 HENAN GALLOWAY WOOD IND.	Zumadian city, Henan province	P.R.C.	2017	ACG 800-T
86 BORG MANUFACTURING Pty Ltd.	Oberon	AUSTRALIA	2017	ACG 600-T
85 BORG MANUFACTURING Pty Ltd.	Oberon	AUSTRALIA	2017	ACG 600-T
84 BORG MANUFACTURING Pty Ltd.	Oberon	AUSTRALIA	2017	ACG 800-T
83 BORG MANUFACTURING Pty Ltd.	Oberon	AUSTRALIA	2017	ACG 800-T
82 BORG MANUFACTURING Pty Ltd.	Oberon	AUSTRALIA	2017	ACG 800-T
81 BORG MANUFACTURING Pty Ltd.	Oberon	AUSTRALIA	2017	ACG 800-T
80 BORG MANUFACTURING Pty Ltd.	Oberon	AUSTRALIA	2017	ACG 800-T
79 ALLGREEN TIMBER PRODUCTS	Segamat Johor	MALAYSIA	2017	ACG 600-T
78 ALLGREEN TIMBER PRODUCTS	Segamat Johor	MALAYSIA	2017	ACG 800-T
77 ALLGREEN TIMBER PRODUCTS	Segamat Johor	MALAYSIA	2017	ACG 800-T
76 WANHUA (XINYANG) ECOBOARD	Xinyang city, Henan province	P.R.C.	2017	ACG 600-T
75 WANHUA (XINYANG) ECOBOARD	Xinyang city, Henan province	P.R.C.	2017	ACG 600-T
74 WANHUA (XINYANG) ECOBOARD	Xinyang city, Henan province	P.R.C.	2017	ACG 800-T
73 WANHUA (XINYANG) ECOBOARD	Xinyang city, Henan province	P.R.C.	2017	ACG 800-T
72 WANHUA (XINYANG) ECOBOARD	Xinyang city, Henan province	P.R.C.	2017	ACG 800-T
71 HOTOLI GROUP ZHANJIANG RUNBAO	Zhanjiang city, Guandong province	P.R.C.	2016	ACG 800-T
70 HOTOLI GROUP ZHANJIANG RUNBAO	Zhanjiang city, Guandong province	P.R.C.	2016	ACG 800-T
69 HOTOLI GROUP ZHANJIANG RUNBAO	Zhanjiang city, Guandong province	P.R.C.	2016	ACG 800-T
68 HUANING KELIN WOOD IND.	Anqing city, Anhui province	P.R.C.	2016	ACG 800-T
67 HUANING KELIN WOOD IND.	Anqing city, Anhui province	P.R.C.	2016	ACG 800-T
66 HUANING KELIN WOOD IND.	Anqing city, Anhui province	P.R.C.	2016	ACG 800-T
65 UNILIN DIVISION PANELS - SPANO	Oostrozebeke	BELGIUM	2016	ACG 800-T
64 UNILIN DIVISION PANELS - SPANO	Oostrozebeke	BELGIUM	2016	ACG 800-T
63 XIANGHE TIANYA WOOD IND.	Langang city, Hebei province	P.R.C.	2016	ACG 600-T
62 XIANGHE TIANYA WOOD IND.	Langang city, Hebei province	P.R.C.	2016	ACG 800-T
61 XIANGHE TIANYA WOOD IND.	Langang city, Hebei province	P.R.C.	2016	ACG 800-T
60 XIANGHE TIANYA WOOD IND.	Langang city, Hebei province	P.R.C.	2016	ACG 800-T
59 HENAN GALLOWAY WOOD IND.	Zumadian city, Henan province	P.R.C.	2016	ACG 800-T
58 HENAN GALLOWAY WOOD IND.	Zumadian city, Henan province	P.R.C.	2016	ACG 800-T
57 HENAN GALLOWAY WOOD IND.	Zumadian city, Henan province	P.R.C.	2016	ACG 800-T
56 NOVOPAN DEL ECUADOR	Itulcachi	ECUADOR	2016	ACG 800-T
55 FABRYKI MEBLI "FORTE" S.A.	Ostrow Mazowiecka	POLAND	2016	ACG 600-T
54 FABRYKI MEBLI "FORTE" S.A.	Ostrow Mazowiecka	POLAND	2016	ACG 800-T
53 FABRYKI MEBLI "FORTE" S.A.	Ostrow Mazowiecka	POLAND	2016	ACG 800-T
52 FABRYKI MEBLI "FORTE" S.A.	Ostrow Mazowiecka	POLAND	2016	ACG 800-T



SEPARATORI DINAMICI
HEAVY PARTICLE SEPARATORS

Pos. Item	Cliente Customer	Località Town	Paese Country	Anno Year	Codice Globus Globus code
51	FABRYKI MEBLI "FORTE" S.A.	Ostrow Mazowiecka	POLAND	2016	ACG 800-T
50	FABRYKI MEBLI "FORTE" S.A.	Ostrow Mazowiecka	POLAND	2016	ACG 800-T
49	PG BISON	Piet Retief	SOUTH AFRICA	2016	ACG 600-T
48	SIT - Mauro Saviola Group	Mortara	ITALY	2016	ACG 600-T
47	HEVEABOARD BERHAD	Gemas	MALAYSIA	2015	ACG 800-T
46	HEVEABOARD BERHAD	Gemas	MALAYSIA	2015	ACG 800-T
45	HEVEABOARD BERHAD	Gemas	MALAYSIA	2015	ACG 800-T
44	ALLGREEN TIMBER PRODUCTS	Segamat Johor	MALAYSIA	2015	ACG 600-T
43	ALLGREEN TIMBER PRODUCTS	Segamat Johor	MALAYSIA	2015	ACG 800-T
42	ALLGREEN TIMBER PRODUCTS	Segamat Johor	MALAYSIA	2015	ACG 800-T
41	NORBORD EUROPE Ltd.	Inverness	SCOTLAND	2015	ACG 800-T
40	HEVEABOARD BERHAD	Gemas	MALAYSIA	2015	ACG 800-T
39	TABLEROS LOSAN	Soria	SPAIN	2015	ACG 800-T
38	D&R HENDERSON	Benalla	AUSTRALIA	2014	ACG 800-T
37	KRONOSPAN OSB	Strezelce Opolskie	POLAND	2014	ACG 600-T
36	KRONOSPAN OSB	Strezelce Opolskie	POLAND	2014	ACG 600-T
35	STAR PARTICLE BOARD	Narayangonj	BANGLADESH	2014	ACG 600-T
34	UNILIN DIVISION PANELS - CHIPBOARDS	Wielsbeke	BELGIUM	2014	ACG 800-T
33	UNILIN DIVISION PANELS - CHIPBOARDS	Wielsbeke	BELGIUM	2014	ACG 800-T
32	MODUL SYSTEME	Laufen	GERMANY	2013	ACG 600-T
31	KASTAMONU BULGARIA AD	Gorno Sahrane	BULGARIA	2013	ACG 800-T
30	KASTAMONU BULGARIA AD	Gorno Sahrane	BULGARIA	2013	ACG 800-T
29	KRONOSPAN Bolderaja	Bolderaja	LATVIA	2013	ACG 800-T
28	KRONOSPAN GmbH	Sandebeck	GERMANY	2013	ACG 800-T
27	KRONOSPAN GmbH	Sandebeck	GERMANY	2013	ACG 800-T
26	SUNLIGHT	Karachi	PAKISTAN	2013	ACG 600-T
25	K SERVICES ITALY	Cremona	ITALY	2013	ACG 400-T
24	UNILIN DIVISION PANELS - CHIPBOARDS	Wielsbeke	BELGIUM	2013	ACG 800-T
23	SUNGCHANG	Ulsan	KOREA	2013	ACG 800-T
22	SUNGCHANG	Ulsan	KOREA	2013	ACG 800-T
21	PAL	Ponte di Piave	ITALY	2012	SDG 110.60
20	PAL	Ponte di Piave	ITALY	2012	SDG 15/600
19	MODUL SYSTEME	Laufen	GERMANY	2011	SDG 200.1000
18	NOVOPAN DEL ECUADOR	Itulcachi	ECUADOR	2011	SDG 150.400
17	NOVOPAN DEL ECUADOR	Itulcachi	ECUADOR	2011	SDG 150.600
16	MODUL SYSTEME	Laufen	GERMANY	2010	SDG 150.400
15	MODUL SYSTEME	Laufen	GERMANY	2010	SDG 150.400
14	MODUL SYSTEME	Laufen	GERMANY	2010	SDG 150.400
13	MODUL SYSTEME	Laufen	GERMANY	2010	ACG 1600-C
12	EO2 Ingènerie	Malakoff	FRANCE	2009	ACG 1600-C
11	MODUL SYSTEME	Laufen	GERMANY	2009	ACG 1600C
10	MODUL SYSTEME	Laufen	GERMANY	2008	ACG 600-T
9	MODUL SYSTEME	Laufen	GERMANY	2008	ACG 400 T
8	K-SERVICE	Mulheim	GERMANY	2008	ACG 400 T
7	K-SERVICE	Mulheim	GERMANY	2008	ACG 400T
6	DRAMA	Nevrokopi	GREECE	2008	ACG 600T
5	MODUL SYSTEME	Laufen	GERMANY	2008	ACG 600T



SEPARATORI DINAMICI
HEAVY PARTICLE SEPARATORS

Pos. Cliente	Località	Paese	Anno	Codice Globus
Item Customer	Town	Country	Year	Globus code
4 CIOP	Vicoforte	ITALY	2007	ACG 800-T
3 MODUL SYSTEME	Laufen	GERMANY	2007	ACG 800-T
2 KLINKERT	Doubai	UAE	2005	ACG 400T
1 ATC	Moncure	USA	2005	ACG 400T



TRASPORTATORI A CATENA
CHAIN CONVEYORS

Pos.	Cliente	Località	Paese	Anno	Codice Globus
Item	Customer	Town	Country	Year	Globus code
28	TABLEROS HISPANOS	Lugo	SPAIN	2022	TCG 40.150-4
27	TABLEROS HISPANOS	Lugo	SPAIN	2022	TCG 40.090-4
26	TABLEROS HISPANOS	Lugo	SPAIN	2021	LCG 12.100-3+SW
25	CITADEL INTL Trading LLC	Dubai Media City	DUBAI, UAE	2020	LCG 14.110-4
24	FABRYKI MEBLI "FORTE" S.A.	Ostrow Mazowiecka	POLAND	2016	TCG 40.130-3
23	FABRYKI MEBLI "FORTE" S.A.	Ostrow Mazowiecka	POLAND	2016	TCG 40.060-3
22	FABRYKI MEBLI "FORTE" S.A.	Ostrow Mazowiecka	POLAND	2016	TCG 10.130-3+1OS
21	WOODRIMBIO	Chungbuk	KOREA	2015	TCG 40-105-4
20	WOODRIMBIO	Chungbuk	KOREA	2015	TCG 40-060-4
19	WOODRIMBIO	Chungbuk	KOREA	2015	TCG 10-100-3+1OS
18	WOOD RUBBER GROUP	Quang Tri	VIETNAM	2014	TCG 40.150-4
17	WOOD RUBBER GROUP	Quang Tri	VIETNAM	2014	TCG 40.130-4
16	WOOD RUBBER GROUP	Quang Tri	VIETNAM	2014	TCG 40-060-4
15	WOOD RUBBER GROUP	Quang Tri	VIETNAM	2014	TCG 40-060-4
14	ROQUETTE	Beinheim	FRANCE	2010	12.17.080.2T
13	ROQUETTE	Beinheim	FRANCE	2010	TCG 90.60-6
12	ROQUETTE	Beinheim	FRANCE	2010	TCG 90.100-6
11	ROQUETTE	Beinheim	FRANCE	2010	TCG 12.15.080-2T
10	ROQUETTE	Beinheim	FRANCE	2010	TCG 60.060-5
9	ROQUETTE	Beinheim	FRANCE	2010	TCG 60.100-5
8	ZIGNAGO POWER	Fossalta di Portogruaro	ITALY	2010	TCG 40.050-5
7	ZIGNAGO POWER	Fossalta di Portogruaro	ITALY	2010	TCG 40.125-5
6	WILLIAM TELL	Johannesburg	SOUTH AFRICA	2007	TCG 25.080-3
5	WILLIAM TELL	Johannesburg	SOUTH AFRICA	2007	TCG 25.40-3
4	ABINSK	San Damaso	ITALY	2007	TCG 25.100-3
3	ABINSK	San Damaso	ITALY	2007	TCG 25.60-3
2	PT. KUTAI TIMBER INDONESIA	Probolinggo	INDONESIA	2006	OCG 35.80
1	PT. KUTAI TIMBER INDONESIA	Probolinggo	INDONESIA	2006	TCG 25.7



TRASPORTATORI A NASTRO

BELT CONVEYORS

Pos. Cliente	Località	Paese	Anno	Codice Globus
Item Customer	Town	Country	Year	Globus code
111 GIR D.O.O.	Kraljevo	SERBIA	2024	NTL 10.12-050 MD
110 GRANS DEL LLUÇANÈS, S.L.	Sant Martí d'Albars	SPAIN	2024	NTL 14.09-085 TC BP
109 YILDIZ ENTEGRE A.Ş.	Uzunbey, Kartepe - Kocaeli	TURKEY	2023	NTL 02.1
108 PT. RIMBA PARTIKEL INDONESIA	Kendal, Central Java	INDONESIA	2023	NTL 10.07-040
107 GREENLAM	Andhra Pradesh	INDIA	2022	NTL 02.1
106 GREENLAM	Andhra Pradesh	INDIA	2022	NTL 02.1
105 GREENLAM	Andhra Pradesh	INDIA	2022	NTL 02.2
104 GREENLAM	Andhra Pradesh	INDIA	2022	NTL 02.2
103 GREENLAM	Andhra Pradesh	INDIA	2022	NTL 02.2
102 GREENLAM	Andhra Pradesh	INDIA	2022	NTL 12.16-060
101 LAMINEX GROUP PTY LTD	Dardanup	AUSTRALIA	2022	NTL 02.1
100 BERNECK S.A.	Curitiba	BRAZIL	2022	NTL 02.1
99 BERNECK S.A.	Curitiba	BRAZIL	2022	NTL 02.1
98 BERNECK S.A.	Curitiba	BRAZIL	2022	NTL 02.2
97 BERNECK S.A.	Curitiba	BRAZIL	2022	NTL 02.2
96 BERNECK S.A.	Curitiba	BRAZIL	2022	NTL 02.2
95 BERNECK S.A.	Curitiba	BRAZIL	2022	NTL 02.2
94 BAAHU PANELS (GREENPLY GROUP)	Sherpura	INDIA	2021	NTL 12.12-060
93 TABLEROS HISPANOS	Lugo	SPAIN	2021	NTL 12.12-085 TC
92 TABLEROS HISPANOS	Lugo	SPAIN	2021	NTL 02.2
91 TABLEROS HISPANOS	Lugo	SPAIN	2020	NTL 02.1
90 TABLEROS HISPANOS	Lugo	SPAIN	2020	NTL 02.1
89 CITADEL INTL Trading LLC	Dubai Media City	DUBAI, UAE	2020	NTL 14.10-100 TC
88 SONAE ARAUCO PORTUGAL SA	Mangualde	PORTUGAL	2019	NTHL 14.14-085
87 SONAE ARAUCO SA	Estación Linares-Baeza (Jaen)	SPAIN	2019	NTL 02.2
86 OKURA INDUSTRIAL Co., Ltd.	Mitoyo-shi, Kagawa-ken	JAPAN	2019	NTL 02.2
85 OKURA INDUSTRIAL Co., Ltd.	Mitoyo-shi, Kagawa-ken	JAPAN	2019	NTL 02.2
84 FICAP	Pomacle	FRANCE	2019	NTL 10.12-050 TC
83 SHANDONG FENGYUAN	Zaozhuang city, Shandong province	P.R.C.	2018	NTL 02.2
82 SHANDONG FENGYUAN	Zaozhuang city, Shandong province	P.R.C.	2018	NTL 02.2
81 SHANDONG FENGYUAN	Zaozhuang city, Shandong province	P.R.C.	2018	NTL 02.2
80 ENDESA-BOTROSA	Quito	ECUADOR	2018	NTL 10.10-050+PR
79 ENDESA-BOTROSA	Quito	ECUADOR	2018	NTL 10.10-050+PR
78 FINSA	Cella Teruel	SPAIN	2018	NTL 02.2
77 KRONOSPAN LLC	Eastaboga, AL	U.S.A.	2018	NTL 02.2
76 KRONOSPAN LLC	Eastaboga, AL	U.S.A.	2018	NTL 02.2
75 KRONOSPAN LLC	Eastaboga, AL	U.S.A.	2018	NTL 02.2
74 KRONOSPAN LLC	Eastaboga, AL	U.S.A.	2018	NTL 02.2
73 KRONOSPAN LLC	Eastaboga, AL	U.S.A.	2018	NTL 02.2
72 KRONOSPAN LLC	Eastaboga, AL	U.S.A.	2018	NTL 02.2
71 KRONOSPAN LLC	Eastaboga, AL	U.S.A.	2018	NTL 02.1
70 KRONOSPAN LLC	Eastaboga, AL	U.S.A.	2018	NTL 02.1
69 KRONOSPAN LLC	Eastaboga, AL	U.S.A.	2018	NTL 02.1
68 NOVOPAN DEL ECUADOR	Itulcachi	ECUADOR	2017	NTL 02.1
67 NOVOPAN DEL ECUADOR	Itulcachi	ECUADOR	2017	NTL 02.1
66 SHANDONG HEZE MAOSHENG WOOD	Heze city, Shandong province	CHINA	2017	NTL 02.2
65 THANH THANH DAT LIMITED COMPANYY	Son Tho Commune	VIETNAM	2017	NTHL 10.18-050 TC
64 HENAN GALLOWAY WOOD IND.	Zumadian city, Henan province	P.R.C.	2017	NTL 02.2
63 BORG MANUFACTURING Pty Ltd.	Oberon	AUSTRALIA	2017	NTL 16.14-100 TC
62 BORG MANUFACTURING Pty Ltd.	Oberon	AUSTRALIA	2017	NTL 02.2
61 BORG MANUFACTURING Pty Ltd.	Oberon	AUSTRALIA	2017	NTL 02.2
60 BORG MANUFACTURING Pty Ltd.	Oberon	AUSTRALIA	2017	NTL 02.2



TRASPORTATORI A NASTRO

BELT CONVEYORS

Pos.	Cliente	Località	Paese	Anno	Codice Globus
Item	Customer	Town	Country	Year	Globus code
59	BORG MANUFACTURING Pty Ltd.	Oberon	AUSTRALIA	2017	NTL 02.2
58	BORG MANUFACTURING Pty Ltd.	Oberon	AUSTRALIA	2017	NTL 02.2
57	BORG MANUFACTURING Pty Ltd.	Oberon	AUSTRALIA	2017	NTL 02.1
56	BORG MANUFACTURING Pty Ltd.	Oberon	AUSTRALIA	2017	NTL 02.1
55	ALLGREEN TIMBER PRODUCTS	Segamat Johor	MALAYSIA	2017	NTL 02.1
54	ALLGREEN TIMBER PRODUCTS	Segamat Johor	MALAYSIA	2017	NTL 02.2
53	ALLGREEN TIMBER PRODUCTS	Segamat Johor	MALAYSIA	2017	NTL 02.2
52	HOTOLI GROUP ZHANJIANG RUNBAO	Zhanjiang city, Guandong province	P.R.C.	2016	NTL 02.2
51	HOTOLI GROUP ZHANJIANG RUNBAO	Zhanjiang city, Guandong province	P.R.C.	2016	NTL 02.2
50	HOTOLI GROUP ZHANJIANG RUNBAO	Zhanjiang city, Guandong province	P.R.C.	2016	NTL 02.2
49	HUANING KELIN WOOD IND.	Anqing city, Anhui province	P.R.C.	2016	NTL 02.2
48	HUANING KELIN WOOD IND.	Anqing city, Anhui province	P.R.C.	2016	NTL 02.2
47	HUANING KELIN WOOD IND.	Anqing city, Anhui province	P.R.C.	2016	NTL 02.2
46	UNILIN DIVISION PANELS - SPANO	Oostrozebeke	BELGIUM	2016	NTL 02.2
45	UNILIN DIVISION PANELS - SPANO	Oostrozebeke	BELGIUM	2016	NTL 02.2
44	METRO PANEL CO LTD	Bangkok	THAILAND	2016	NTL 12.10-060
43	METRO PARTICLE CO LTD	Bangkok	THAILAND	2016	NTL 08.04-060+PR
42	HENAN GALLOWAY WOOD IND.	Zumadian city, Henan province	P.R.C.	2016	NTL 02.2
41	HENAN GALLOWAY WOOD IND.	Zumadian city, Henan province	P.R.C.	2016	NTL 02.2
40	HENAN GALLOWAY WOOD IND.	Zumadian city, Henan province	P.R.C.	2016	NTL 02.2
39	HANWHA Corp./ SY ENERGY	Chungbuk	KOREA	2016	NTL 12.08-050 TC
38	HANWHA Corp./ SY ENERGY	Chungbuk	KOREA	2016	NTL 05.06-030
37	FABRYKI MEBLI "FORTE" S.A.	Ostrow Mazowiecka	POLAND	2016	NTL 02.1
36	FABRYKI MEBLI "FORTE" S.A.	Ostrow Mazowiecka	POLAND	2016	NTL 02.2
35	FABRYKI MEBLI "FORTE" S.A.	Ostrow Mazowiecka	POLAND	2016	NTL 02.2
34	FABRYKI MEBLI "FORTE" S.A.	Ostrow Mazowiecka	POLAND	2016	NTL 02.2
33	FABRYKI MEBLI "FORTE" S.A.	Ostrow Mazowiecka	POLAND	2016	NTL 02.2
32	FABRYKI MEBLI "FORTE" S.A.	Ostrow Mazowiecka	POLAND	2016	NTL 02.2
31	FABRYKI MEBLI "FORTE" S.A.	Ostrow Mazowiecka	POLAND	2016	NTL 10.19-050+10S TC
30	HEVEABOARD BERHAD	Gemas	MALAYSIA	2015	NTL 02.2
29	HEVEABOARD BERHAD	Gemas	MALAYSIA	2015	NTL 02.2
28	HEVEABOARD BERHAD	Gemas	MALAYSIA	2015	NTL 02.2
27	ALLGREEN TIMBER PRODUCTS	Segamat Johor	MALAYSIA	2015	NTL 02.1
26	ALLGREEN TIMBER PRODUCTS	Segamat Johor	MALAYSIA	2015	NTL 02.2
25	ALLGREEN TIMBER PRODUCTS	Segamat Johor	MALAYSIA	2015	NTL 02.2
24	HEVEABOARD BERHAD	Gemas	MALAYSIA	2015	NTL 02.2
23	WOODRIMBIO	Chungbuk	KOREA	2015	NTL 10.10-040
22	D&R HENDERSON	Benalla	AUSTRALIA	2014	NTL 02.2
21	WOOD RUBBER GROUP	Quang Tri	VIETNAM	2014	NTHL 10.18-060
20	GLUNZ	Nettgau	GERMANY	2014	NTL 18.14-100
19	SANAYE KIMIA CHOOB GOLESTAN	Gorgan	IRAN	2012	NTL 08.08-040
18	SANAYE KIMIA CHOOB GOLESTAN	Gorgan	IRAN	2012	NTL 08.08-040
17	YILDIZ SUNTA	Kartade	TURKEY	2011	NTL 16.10-070
16	YILDIZ ENTEGRE	Koaeli	TURKEY	2011	NTL 16.10-070
15	NOVOPAN DEL ECUADOR	Itulcachi	ECUADOR	2010	NTL 08.08-040
14	AGLOMERADOS COTOPAXI	Cotopaxi	ECUADOR	2010	NTL 08.06-040
13	ZIGNAGO POWER	Fossalta	ITALY	2010	NTHL 12.16-050
12	ROQUETTE	Beinheim	FRANCE	2010	NTHL 12.15-080
11	VITEBSKDREV	Vitebsk	BIELORUSSIA	2010	NTL 10.12-060
10	CEB	Castellavazzo	ITALY	2009	NTHL 10.11-060
9	EUCATEX	Saito	BRAZIL	2009	NTL 05.06-020
8	ALFAWOOD BULGARIA	Dolni Chiflick	BULGARIA	2007	NTHL 08.10-040



TRASPORTATORI A NASTRO
BELT CONVEYORS

Pos. Cliente	Località	Paese	Anno	Codice Globus
Item Customer	Town	Country	Year	Globus code
7 WILLIAM TELL	Johannesburg	SOUTH AFRICA	2007	NTHL 09.06-050
6 IMAL	San Damaso	ITALY	2007	NTHL 08.10-040
5 PT. KUTAI TIMBER INDONESIA	Probolinggo	INDONESIA	2006	NTL 06.08-030
4 PT. KUTAI TIMBER INDONESIA	Probolinggo	INDONESIA	2006	NTH 10.07-050
3 ALFAWOOD	Pindos	GREECE	2006	NTHL 10.05-060
2 ALFAWOOD	Pindos	GREECE	2006	NTL 10.16-050
1 ALFAWOOD	Pindos	GREECE	2006	NTL 05.04-030



TRUCIOLATORI CENTRIFUGHI
KNIFE RING FLAKERS

Pos.	Cliente	Località	Paese	Anno	Codice Globus
Item	Customer	Town	Country	Year	Globus code
296	FUREN GROUP FORESTRY INDUSTRY CO.	Shaowu City, Nanping City	P.R.C.	2024	SRC 14.690-EVO4
295	COMPLY INDUSTRIES LTD.	Nakuru	KENYA	2024	SRC 14.490-EVO4
294	JIANGSU HUABAN NEW MATERIAL TECHNOLOGY CO.	Suqian City, Jiangsu Province	P.R.C.	2024	SRC 14.690-EVO4
293	JIANGSU HUABAN NEW MATERIAL TECHNOLOGY CO.	Suqian City, Jiangsu Province	P.R.C.	2024	SRC 14.690-EVO4
292	JIANGSU HUABAN NEW MATERIAL TECHNOLOGY CO.	Suqian City, Jiangsu Province	P.R.C.	2024	SRC 14.690-EVO4
291	JIANGSU HUABAN NEW MATERIAL TECHNOLOGY CO.	Suqian City, Jiangsu Province	P.R.C.	2024	SRC 14.690-EVO4
290	JIANGSU HUABAN NEW MATERIAL TECHNOLOGY CO.	Suqian City, Jiangsu Province	P.R.C.	2024	SRC 14.690-EVO4
289	YAAN HUILONG NEW MATERIALS	YaAn industry Zone, Sichuan prov	P.R.C.	2023	SRC 14.690-EVO4
288	YAAN HUILONG NEW MATERIALS	YaAn industry Zone, Sichuan prov	P.R.C.	2023	SRC 14.690-EVO4
287	YAAN HUILONG NEW MATERIALS	YaAn industry Zone, Sichuan prov	P.R.C.	2023	SRC 14.690-EVO4
286	YAAN HUILONG NEW MATERIALS	YaAn industry Zone, Sichuan prov	P.R.C.	2023	SRC 14.690-EVO4
285	YAAN HUILONG NEW MATERIALS	YaAn industry Zone, Sichuan prov	P.R.C.	2023	SRC 14.690-EVO4
284	YAAN HUILONG NEW MATERIALS	YaAn industry Zone, Sichuan prov	P.R.C.	2023	SRC 14.690-EVO4
283	YAAN HUILONG NEW MATERIALS	YaAn industry Zone, Sichuan prov	P.R.C.	2023	SRC 14.690-EVO4
282	YAAN HUILONG NEW MATERIALS	YaAn industry Zone, Sichuan prov	P.R.C.	2023	SRC 14.690-EVO4
281	HUBEI NINGFENG NEW MATERIAL TECNOLOGY CO.	HuangGang city, Hubei province	P.R.C.	2023	SRC 14.690-EVO4
280	HUBEI NINGFENG NEW MATERIAL TECNOLOGY CO.	HuangGang city, Hubei province	P.R.C.	2023	SRC 14.690-EVO4
279	HUBEI NINGFENG NEW MATERIAL TECNOLOGY CO.	HuangGang city, Hubei province	P.R.C.	2023	SRC 14.690-EVO4
278	HUBEI NINGFENG NEW MATERIAL TECNOLOGY CO.	HuangGang city, Hubei province	P.R.C.	2023	SRC 14.690-EVO4
277	HUBEI NINGFENG NEW MATERIAL TECNOLOGY CO.	HuangGang city, Hubei province	P.R.C.	2023	SRC 14.690-EVO4
276	HUBEI NINGFENG NEW MATERIAL TECNOLOGY CO.	HuangGang city, Hubei province	P.R.C.	2023	SRC 14.690-EVO4
275	HUBEI NINGFENG NEW MATERIAL TECNOLOGY CO.	HuangGang city, Hubei province	P.R.C.	2023	SRC 14.690-EVO4
274	HUBEI NINGFENG NEW MATERIAL TECNOLOGY CO.	HuangGang city, Hubei province	P.R.C.	2023	SRC 14.690-EVO4
273	HUBEI NINGFENG NEW MATERIAL TECNOLOGY CO.	HuangGang city, Hubei province	P.R.C.	2023	SRC 14.690-EVO4
272	HUBEI NINGFENG NEW MATERIAL TECNOLOGY CO.	HuangGang city, Hubei province	P.R.C.	2023	SRC 14.690-EVO4
271	XILOPAN S.P.A.	Cigognola	ITALY	2023	SRC 14.690-EVO4
270	JINGDE BAISHIDA NEW MATERIAL CO	Xuancheng City, AnHui Province	P.R.C.	2023	SRC 14.690-EVO4
269	JINGDE BAISHIDA NEW MATERIAL CO	Xuancheng City, AnHui Province	P.R.C.	2023	SRC 14.690-EVO4
268	JINGDE BAISHIDA NEW MATERIAL CO	Xuancheng City, AnHui Province	P.R.C.	2023	SRC 14.690-EVO4
267	JINGDE BAISHIDA NEW MATERIAL CO	Xuancheng City, AnHui Province	P.R.C.	2023	SRC 14.690-EVO4
266	JINGDE BAISHIDA NEW MATERIAL CO	Xuancheng City, AnHui Province	P.R.C.	2023	SRC 14.690-EVO4
265	JINGDE BAISHIDA NEW MATERIAL CO	Xuancheng City, AnHui Province	P.R.C.	2023	SRC 14.690-EVO4
264	JINGDE BAISHIDA NEW MATERIAL CO	Xuancheng City, AnHui Province	P.R.C.	2023	SRC 14.690-EVO4
263	JINGDE BAISHIDA NEW MATERIAL CO	Xuancheng City, AnHui Province	P.R.C.	2023	SRC 14.690-EVO4
262	JINGDE BAISHIDA NEW MATERIAL CO	Xuancheng City, AnHui Province	P.R.C.	2023	SRC 14.690-EVO4
261	JINGDE BAISHIDA NEW MATERIAL CO	Xuancheng City, AnHui Province	P.R.C.	2023	SRC 14.690-EVO4
260	GUANGXI KAILI NEW MATERIAL	Hechi city, Guangxi Province	P.R.C.	2023	SRC 14.690-EVO4
259	GUANGXI KAILI NEW MATERIAL	Hechi city, Guangxi Province	P.R.C.	2023	SRC 14.690-EVO4
258	GUANGXI KAILI NEW MATERIAL	Hechi city, Guangxi Province	P.R.C.	2023	SRC 14.690-EVO4
257	ANSHAN ZHONGYUAN MDF PLANT	Anshan city, Liaoning province	P.R.C.	2023	SRC 14.690-EVO4
256	ANSHAN ZHONGYUAN MDF PLANT	Anshan city, Liaoning province	P.R.C.	2023	SRC 14.690-EVO4
255	ANSHAN ZHONGYUAN MDF PLANT	Anshan city, Liaoning province	P.R.C.	2023	SRC 14.690-EVO4
254	ANSHAN ZHONGYUAN MDF PLANT	Anshan city, Liaoning province	P.R.C.	2023	SRC 14.690-EVO4
253	ANHUI JINGXUAN NEW MATERIAL	Suzhou city, Anhui province	P.R.C.	2023	SRC 14.690-EVO4
252	ANHUI JINGXUAN NEW MATERIAL	Suzhou city, Anhui province	P.R.C.	2023	SRC 14.690-EVO4
251	ANHUI JINGXUAN NEW MATERIAL	Suzhou city, Anhui province	P.R.C.	2023	SRC 14.690-EVO4
250	ANHUI JINGXUAN NEW MATERIAL	Suzhou city, Anhui province	P.R.C.	2023	SRC 14.690-EVO4
249	ANHUI JINGXUAN NEW MATERIAL	Suzhou city, Anhui province	P.R.C.	2023	SRC 14.690-EVO4
248	ANHUI JINGXUAN NEW MATERIAL	Suzhou city, Anhui province	P.R.C.	2023	SRC 14.690-EVO4
247	ANHUI JINGXUAN NEW MATERIAL	Suzhou city, Anhui province	P.R.C.	2023	SRC 14.690-EVO4
246	ANHUI JINGXUAN NEW MATERIAL	Suzhou city, Anhui province	P.R.C.	2023	SRC 14.690-EVO4
245	SHANDONG NUOBODE NEW MATERIAL	Linyi city, Shandong province	P.R.C.	2023	SRC 14.690-EVO4



TRUCIOLATORI CENTRIFUGHI
KNIFE RING FLAKERS

Pos.	Cliente	Località	Paese	Anno	Codice Globus
Item	Customer	Town	Country	Year	Globus code
244	SHANDONG NUOBODE NEW MATERIAL	Linyi city, Shandong province	P.R.C.	2023	SRC 14.690-EVO4
243	SHANDONG NUOBODE NEW MATERIAL	Linyi city, Shandong province	P.R.C.	2023	SRC 14.690-EVO4
242	NEARKUDOS (TIELING) HIGH-TECH MATERIALS	Tieling city, Liaoning province	P.R.C.	2023	SRC 14.690-EVO4
241	NEARKUDOS (TIELING) HIGH-TECH MATERIALS	Tieling city, Liaoning province	P.R.C.	2023	SRC 14.690-EVO4
240	NEARKUDOS (TIELING) HIGH-TECH MATERIALS	Tieling city, Liaoning province	P.R.C.	2023	SRC 14.690-EVO4
239	NEARKUDOS (TIELING) HIGH-TECH MATERIALS	Tieling city, Liaoning province	P.R.C.	2023	SRC 14.690-EVO4
238	GUANGXI QUNYI NEW MATERIAL	Laibin city, Guangxi province	P.R.C.	2023	SRC 14.690-EVO4
237	GUANGXI QUNYI NEW MATERIAL	Laibin city, Guangxi province	P.R.C.	2023	SRC 14.690-EVO4
236	GUANGXI QUNYI NEW MATERIAL	Laibin city, Guangxi province	P.R.C.	2023	SRC 14.690-EVO4
235	GUANGXI QUNYI NEW MATERIAL	Laibin city, Guangxi province	P.R.C.	2023	SRC 14.690-EVO4
234	GUANGXI QUNYI NEW MATERIAL	Laibin city, Guangxi province	P.R.C.	2023	SRC 14.690-EVO4
233	JINMU MEIJIA	Tangshan city, Hebei province	P.R.C.	2023	SRC 14.690-EVO4
232	JINMU MEIJIA	Tangshan city, Hebei province	P.R.C.	2023	SRC 14.690-EVO4
231	JINMU MEIJIA	Tangshan city, Hebei province	P.R.C.	2023	SRC 14.690-EVO4
230	YUNJING FEILIN	Yunnan province	P.R.C.	2023	SRC 14.690-EVO4
229	YUNJING FEILIN	Yunnan province	P.R.C.	2023	SRC 14.690-EVO4
228	YUNJING FEILIN	Yunnan province	P.R.C.	2023	SRC 14.690-EVO4
227	YUNJING FEILIN	Yunnan province	P.R.C.	2023	SRC 14.690-EVO4
226	CHENGDE SENXI WOOD INDUSTRY	Chengde city, Hebei province	P.R.C.	2022	SRC 14.690-EVO4
225	TAIHE DONGDUN WOOD INDUSTRY	Fuyang city, Anhui province	P.R.C.	2022	SRC 14.690-EVO4
224	TAIHE DONGDUN WOOD INDUSTRY	Fuyang city, Anhui province	P.R.C.	2022	SRC 14.690-EVO4
223	HUBEI DONGLIN NEW MATERIAL	Xiaogan city, Hubei province	P.R.C.	2022	SRC 14.690-EVO4
222	HUBEI DONGLIN NEW MATERIAL	Xiaogan city, Hubei province	P.R.C.	2022	SRC 14.690-EVO4
221	HUBEI DONGLIN NEW MATERIAL	Xiaogan city, Hubei province	P.R.C.	2022	SRC 14.690-EVO4
220	HUBEI DONGLIN NEW MATERIAL	Xiaogan city, Hubei province	P.R.C.	2022	SRC 14.690-EVO4
219	HUBEI DONGLIN NEW MATERIAL	Xiaogan city, Hubei province	P.R.C.	2022	SRC 14.690-EVO4
218	HUBEI DONGLIN NEW MATERIAL	Xiaogan city, Hubei province	P.R.C.	2022	SRC 14.690-EVO4
217	GUANGXI YUANFENG NEW MATERIAL	Nanning city, Guangxi province	P.R.C.	2022	SRC 14.690-EVO4
216	GUANGXI YUANFENG NEW MATERIAL	Nanning city, Guangxi province	P.R.C.	2022	SRC 14.690-EVO4
215	GUANGXI YUANFENG NEW MATERIAL	Nanning city, Guangxi province	P.R.C.	2022	SRC 14.690-EVO4
214	HEBEI JIANFENG WOOD INDUSTRY	Tangshan city, Hebei province	P.R.C.	2022	SRC 14.690-EVO4
213	HEBEI JIANFENG WOOD INDUSTRY	Tangshan city, Hebei province	P.R.C.	2022	SRC 14.690-EVO4
212	HEBEI JIANFENG WOOD INDUSTRY	Tangshan city, Hebei province	P.R.C.	2022	SRC 14.690-EVO4
211	HEBEI JIANFENG WOOD INDUSTRY	Tangshan city, Hebei province	P.R.C.	2022	SRC 14.690-EVO4
210	SANHUAN HUALAN	Chibi city, Hubei province	P.R.C.	2022	SRC 14.690-EVO4
209	SANHUAN HUALAN	Chibi city, Hubei province	P.R.C.	2022	SRC 14.690-EVO4
208	YAAN HUILONG NEW MATERIALS	YaAn industry zone, Sichuan prov	P.R.C.	2022	SRC 14.690-EVO4
207	JINYU TIAN TAN	Tangshan city, Hebei province	P.R.C.	2022	SRC 14.690-EVO4
206	JINYU TIAN TAN	Tangshan city, Hebei province	P.R.C.	2022	SRC 14.690-EVO4
205	GREENLAM	Andhra Pradesh	INDIA	2022	SRC 14.690-EVO4
204	GREENLAM	Andhra Pradesh	INDIA	2022	SRC 14.690-EVO4
203	GREENLAM	Andhra Pradesh	INDIA	2022	SRC 14.690-EVO4
202	HUBEI NINGFENG	HuangGang city, Hubei province	P.R.C.	2022	SRC 14.690-EVO4
201	HUBEI NINGFENG	HuangGang city, Hubei province	P.R.C.	2022	SRC 14.690-EVO4
200	HUBEI NINGFENG	HuangGang city, Hubei province	P.R.C.	2022	SRC 14.690-EVO4
199	HUBEI NINGFENG	HuangGang city, Hubei province	P.R.C.	2022	SRC 14.690-EVO4
198	HUBEI NINGFENG	HuangGang city, Hubei province	P.R.C.	2022	SRC 14.690-EVO4
197	HUBEI NINGFENG	HuangGang city, Hubei province	P.R.C.	2022	SRC 14.690-EVO4
196	HUBEI NINGFENG	HuangGang city, Hubei province	P.R.C.	2022	SRC 14.690-EVO4
195	HUBEI NINGFENG	HuangGang city, Hubei province	P.R.C.	2022	SRC 14.690-EVO4
194	HUBEI NINGFENG	HuangGang city, Hubei province	P.R.C.	2022	SRC 14.690-EVO4
193	HUBEI NINGFENG	HuangGang city, Hubei province	P.R.C.	2022	SRC 14.690-EVO4



TRUCIOLATORI CENTRIFUGHI
KNIFE RING FLAKERS

Pos.	Cliente	Località	Paese	Anno	Codice Globus
Item	Customer	Town	Country	Year	Globus code
192	ANHUI WANQING BAMBOO INDUSTRY	Liuan city, Anhui province	P.R.C.	2022	SRC 14.690-EVO4
191	GUANGXI LUBANG NEW MATERIAL	Laibin city, Guangxi province	P.R.C.	2022	SRC 14.690-EVO4
190	GUANGXI LUBANG NEW MATERIAL	Laibin city, Guangxi province	P.R.C.	2022	SRC 14.690-EVO4
189	GUANGXI LUBANG NEW MATERIAL	Laibin city, Guangxi province	P.R.C.	2022	SRC 14.690-EVO4
188	GUANGXI LUBANG NEW MATERIAL	Laibin city, Guangxi province	P.R.C.	2022	SRC 14.690-EVO4
187	PT. KUTAI TIMBER INDONESIA	Probolinggo	INDONESIA	2022	SRC 14.490-EVO4
186	GALLOWAY GROUP (DINGYUAN)	Dingyuan, Anhui province	P.R.C.	2022	SRC 14.690-EVO4
185	GALLOWAY GROUP (DINGYUAN)	Dingyuan, Anhui province	P.R.C.	2022	SRC 14.690-EVO4
184	GALLOWAY GROUP (DINGYUAN)	Dingyuan, Anhui province	P.R.C.	2022	SRC 14.690-EVO4
183	GALLOWAY GROUP (DINGYUAN)	Dingyuan, Anhui province	P.R.C.	2022	SRC 14.690-EVO4
182	GALLOWAY GROUP (DINGYUAN)	Dingyuan, Anhui province	P.R.C.	2022	SRC 14.690-EVO4
181	GALLOWAY GROUP (DINGYUAN)	Zumadian city, Henan province	P.R.C.	2022	SRC 14.690-EVO4
180	GALLOWAY GROUP (DINGYUAN)	Zumadian city, Henan province	P.R.C.	2022	SRC 14.690-EVO4
179	GALLOWAY GROUP (DINGYUAN)	Zumadian city, Henan province	P.R.C.	2022	SRC 14.690-EVO4
178	GALLOWAY GROUP (DINGYUAN)	Zumadian city, Henan province	P.R.C.	2022	SRC 14.690-EVO4
177	GALLOWAY GROUP (DINGYUAN)	Zumadian city, Henan province	P.R.C.	2022	SRC 14.690-EVO4
176	LUONING SANHUAN	Luoyang city, Henan province	P.R.C.	2022	SRC 14.690-EVO4
175	ANSHAN ZHONGYUAN MDF PLANT	Anshan city, Liaoning province	P.R.C.	2022	SRC 14.690-EVO4
174	BERNECK S.A.	Curitiba	BRAZIL	2022	SRC 14.690-EVO4
173	BERNECK S.A.	Curitiba	BRAZIL	2022	SRC 14.690-EVO4
172	BERNECK S.A.	Curitiba	BRAZIL	2022	SRC 14.690-EVO4
171	BERNECK S.A.	Curitiba	BRAZIL	2022	SRC 14.690-EVO4
170	ANHUI LIUAN YEJI LIREN WOOD INDUSTRY	Liuan city, Anhui province	P.R.C.	2021	SRC 14.690-EVO4
169	TANGXIAN HUIYIN WOOD INDUSTRY	Baoding city, Hebei province	P.R.C.	2021	SRC 14.690-EVO4
168	BAZHONG JIANFENG NEW MATERIAL	Bazhong city, Sichuan province	P.R.C.	2021	SRC 14.690-EVO4
167	BAZHONG JIANFENG NEW MATERIAL	Bazhong city, Sichuan province	P.R.C.	2021	SRC 14.690-EVO4
166	TABLEROS HISPANOS	Lugo	SPAIN	2021	SRC 14.690-EVO4
165	LAOHEKOU DINGFENG WOOD	Laohekou city, Xiangyang, Hubei	P.R.C.	2021	SRC 14.690-EVO4
164	LAOHEKOU DINGFENG WOOD	Laohekou city, Xiangyang, Hubei	P.R.C.	2021	SRC 14.690-EVO4
163	LAOHEKOU DINGFENG WOOD	Laohekou city, Xiangyang, Hubei	P.R.C.	2021	SRC 14.690-EVO4
162	ANSHAN ZHONGYUAN MDF PLANT	Anshan city, Liaoning province	P.R.C.	2021	SRC 14.690-EVO4
161	SHANGQIU DINGFENG WOOD	Shangqiu city, Henan province	P.R.C.	2020	SRC 14.690-EVO4
160	BAZHONG JIANFENG NEW MATERIAL	Bazhong city, Sichuan province	P.R.C.	2020	SRC 14.690-EVO4
159	BAZHONG JIANFENG NEW MATERIAL	Bazhong city, Sichuan province	P.R.C.	2020	SRC 14.690-EVO4
158	BAZHONG JIANFENG NEW MATERIAL	Bazhong city, Sichuan province	P.R.C.	2020	SRC 14.690-EVO4
157	CHENGDE SENXI WOOD INDUSTRY	Chengde city, Hebei province	P.R.C.	2020	SRC 14.690-EVO4
156	CHENGDE SENXI WOOD INDUSTRY	Chengde city, Hebei province	P.R.C.	2020	SRC 14.690-EVO4
155	CHENGDE SENXI WOOD INDUSTRY	Chengde city, Hebei province	P.R.C.	2020	SRC 14.690-EVO4
154	LIAONING NIER KEDA ENVIRONMENTAL	Tieling city, Liaoning province	P.R.C.	2020	SRC 14.690-EVO4
153	LIAONING NIER KEDA ENVIRONMENTAL	Tieling city, Liaoning province	P.R.C.	2020	SRC 14.690-EVO4
152	LIAONING NIER KEDA ENVIRONMENTAL	Tieling city, Liaoning province	P.R.C.	2020	SRC 14.690-EVO4
151	LIUAN DONGDUN WOOD INDUSTRY	Lu'an city, Anhui province	P.R.C.	2020	SRC 14.690-EVO4
150	ANSHAN ZHONGYUAN MDF PLANT	Anshan city, Liaoning province	P.R.C.	2020	SRC 14.690-EVO4
149	YAAN HUILONG NEW MATERIALS	YaAn industry Zone, Sichuan prov	P.R.C.	2020	SRC 14.690-EVO4
148	YAAN HUILONG NEW MATERIALS	YaAn industry Zone, Sichuan prov	P.R.C.	2020	SRC 14.690-EVO4
147	YAAN HUILONG NEW MATERIALS	YaAn industry Zone, Sichuan prov	P.R.C.	2020	SRC 14.690-EVO4
146	YAAN HUILONG NEW MATERIALS	YaAn industry Zone, Sichuan prov	P.R.C.	2020	SRC 14.690-EVO4
145	RIZHAO OSBONE DECORATION MATERIAL	Rizhao city, Shandong province	P.R.C.	2020	SRC 14.690-EVO4
144	RIZHAO OSBONE DECORATION MATERIAL	Rizhao city, Shandong province	P.R.C.	2020	SRC 14.690-EVO4
143	TANGXIAN HUIYIN WOOD INDUSTRY	Baoding city, Hebei province	P.R.C.	2019	SRC 14.690-EVO4
142	NORBORD EUROPE	Genk	BELGIUM	2019	RSG 14.690-GT
141	SONAE ARAUCO SA	Estación Linares-Baeza (Jaen)	SPAIN	2019	SRC 14.690-EVO4



TRUCIOLATORI CENTRIFUGHI
KNIFE RING FLAKERS

Pos.	Cliente	Località	Paese	Anno	Codice Globus
Item	Customer	Town	Country	Year	Globus code
140	HEBEI SHENGAOSONG WOOD INDUSTRY	LuanNan county, Hebei province	P.R.C.	2019	SRC 14.690-EVO4
139	HEBEI SHENGAOSONG WOOD INDUSTRY	LuanNan county, Hebei province	P.R.C.	2019	SRC 14.690-EVO4
138	HEBEI SHENGAOSONG WOOD INDUSTRY	LuanNan county, Hebei province	P.R.C.	2019	SRC 14.690-EVO4
137	OKURA INDUSTRIAL	Mitoyo-shi, Kagawa-ken	JAPAN	2019	SRC 14.690-EVO4
136	OKURA INDUSTRIAL	Mitoyo-shi, Kagawa-ken	JAPAN	2019	SRC 14.690-EVO4
135	LINYI XINGANG	Linyi city, Shandong province	P.R.C.	2018	SRC 14.690-EVO4
134	SHANDONG FENGYUAN	Zaozhuang city, Shandong provin	P.R.C.	2018	RSG 14.690-GT
133	SHANDONG FENGYUAN	Zaozhuang city, Shandong provin	P.R.C.	2018	RSG 14.690-GT
132	SHANDONG FENGYUAN	Zaozhuang city, Shandong provin	P.R.C.	2018	RSG 14.690-GT
131	FINSA	Cella Teruel	SPAIN	2018	SRC 14.690-EVO4
130	LIUAN DONGDUN WOOD INDUSTRY	Lu'an city, Anhui province	P.R.C.	2018	SRC 14.690-EVO4
129	LIUAN DONGDUN WOOD INDUSTRY	Lu'an city, Anhui province	P.R.C.	2018	SRC 14.690-EVO4
128	LIUAN DONGDUN WOOD INDUSTRY	Lu'an city, Anhui province	P.R.C.	2018	SRC 14.690-EVO4
127	KRONOSPAN LLC	Eastaboga, AL	U.S.A.	2018	SRC 14.690-EVO4
126	KRONOSPAN LLC	Eastaboga, AL	U.S.A.	2018	SRC 14.690-EVO4
125	KRONOSPAN LLC	Eastaboga, AL	U.S.A.	2018	SRC 14.690-EVO4
124	KRONOSPAN LLC	Eastaboga, AL	U.S.A.	2018	SRC 14.690-EVO4
123	KRONOSPAN LLC	Eastaboga, AL	U.S.A.	2018	SRC 14.690-EVO4
122	KRONOSPAN LLC	Eastaboga, AL	U.S.A.	2018	SRC 14.690-EVO4
121	SADEPAN LATINOAMERICANA S.A.	Concepción	ARGENTINA	2017	SRC 14.490-EVO4
120	EGGER HOLZWERKSTOFFE WISMAR	Wismar	GERMANY	2017	RSG 14.690-GT
119	SHANDONG HEZE MAOSHENG WOOD	Heze city, Shandong province	P.R.C.	2017	SRC 14.690-EVO4
118	HENAN GALLOWAY WOOD IND.	Zumadian city, Henan province	P.R.C.	2017	SRC 14.690-EVO4
117	BORG MANUFACTURING Pty Ltd.	Oberon	AUSTRALIA	2017	SRC 14.690-EVO4
116	BORG MANUFACTURING Pty Ltd.	Oberon	AUSTRALIA	2017	SRC 14.690-EVO4
115	BORG MANUFACTURING Pty Ltd.	Oberon	AUSTRALIA	2017	SRC 14.690-EVO4
114	BORG MANUFACTURING Pty Ltd.	Oberon	AUSTRALIA	2017	SRC 14.690-EVO4
113	BORG MANUFACTURING Pty Ltd.	Oberon	AUSTRALIA	2017	SRC 14.690-EVO4
112	ALLGREEN TIMBER PRODUCTS	Segamat Johor	MALAYSIA	2017	SRC 14.690-EVO4
111	ALLGREEN TIMBER PRODUCTS	Segamat Johor	MALAYSIA	2017	SRC 14.690-EVO4
110	WANHUA (XINYANG) ECOBOARD	Xinyang city, Henan province	P.R.C.	2017	SRC 14.690-EVO4
109	WANHUA (XINYANG) ECOBOARD	Xinyang city, Henan province	P.R.C.	2017	SRC 14.690-EVO4
108	WANHUA (XINYANG) ECOBOARD	Xinyang city, Henan province	P.R.C.	2017	SRC 14.690-EVO4
107	HOTOLI GROUP ZHANJIANG RUNBAO	Zhanjiang city, Guandong provinc	P.R.C.	2016	SRC 14.690-EVO4
106	HOTOLI GROUP ZHANJIANG RUNBAO	Zhanjiang city, Guandong provinc	P.R.C.	2016	SRC 14.690-EVO4
105	HOTOLI GROUP ZHANJIANG RUNBAO	Zhanjiang city, Guandong provinc	P.R.C.	2016	SRC 14.690-EVO4
104	HUANING KELIN WOOD IND.	Anqing city, Anhui province	P.R.C.	2016	SRC 14.690-EVO4
103	HUANING KELIN WOOD IND.	Anqing city, Anhui province	P.R.C.	2016	SRC 14.690-EVO4
102	HUANING KELIN WOOD IND.	Anqing city, Anhui province	P.R.C.	2016	SRC 14.690-EVO4
101	UNILIN DIVISION PANELS - SPANO	Oostrozebeke	BELGIUM	2016	SRC 14.690-EVO4
100	UNILIN DIVISION PANELS - SPANO	Oostrozebeke	BELGIUM	2016	SRC 14.690-EVO4
99	XIANGHE TIANYA WOOD IND.	Langang city, Hebei province	P.R.C.	2016	SRC 14.690-EVO4
98	XIANGHE TIANYA WOOD IND.	Langang city, Hebei province	P.R.C.	2016	SRC 14.690-EVO4
97	XIANGHE TIANYA WOOD IND.	Langang city, Hebei province	P.R.C.	2016	SRC 14.690-EVO4
96	HENAN GALLOWAY WOOD IND.	Zumadian city, Henan province	P.R.C.	2016	SRC 14.690-EVO4
95	HENAN GALLOWAY WOOD IND.	Zumadian city, Henan province	P.R.C.	2016	SRC 14.690-EVO4
94	HENAN GALLOWAY WOOD IND.	Zumadian city, Henan province	P.R.C.	2016	SRC 14.690-EVO4
93	NOVOPAN DEL ECUADOR	Itulcachi	ECUADOR	2016	SRC 14.490-EVO4
92	FABRYKI MEBLI "FORTE" S.A.	Ostrow Mazowiecka	POLAND	2016	SRC 14.690-EVO4
91	FABRYKI MEBLI "FORTE" S.A.	Ostrow Mazowiecka	POLAND	2016	SRC 14.690-EVO4
90	FABRYKI MEBLI "FORTE" S.A.	Ostrow Mazowiecka	POLAND	2016	SRC 14.690-EVO4
89	FABRYKI MEBLI "FORTE" S.A.	Ostrow Mazowiecka	POLAND	2016	SRC 14.690-EVO4



TRUCIOLATORI CENTRIFUGHI
KNIFE RING FLAKERS

Pos.	Cliente	Località	Paese	Anno	Codice Globus
Item	Customer	Town	Country	Year	Globus code
88	FABRYKI MEBLI "FORTE" S.A.	Ostrow Mazowiecka	POLAND	2016	SRC 14.690-EVO4
87	HEVEABOARD BERHAD	Gemas	MALAYSIA	2015	SRC 14.690-EVO4
86	HEVEABOARD BERHAD	Gemas	MALAYSIA	2015	SRC 14.690-EVO4
85	HEVEABOARD BERHAD	Gemas	MALAYSIA	2015	SRC 14.690-EVO4
84	ALLGREEN TIMBER PRODUCTS	Segamat Johor	MALAYSIA	2015	SRC 14.690-EVO4
83	ALLGREEN TIMBER PRODUCTS	Segamat Johor	MALAYSIA	2015	SRC 14.690-EVO4
82	NORBORD EUROPE Ltd.	Inverness	SCOTLAND	2015	RSG 14.690-48C
81	HEVEABOARD BERHAD	Gemas	MALAYSIA	2015	SRC 14.690-EVO4
80	TABLEROS LOSAN	Soria	SPAIN	2015	SRC 14.690-EVO4
79	D&R HENDERSON	Benalla	AUSTRALIA	2014	SRC 14.690-EVO4
78	UNILIN DIVISION PANELS - CHIPBOARDS	Wielsbeke	BELGIUM	2014	SRC 14.690 AR-54C
77	UNILIN DIVISION PANELS - CHIPBOARDS	Wielsbeke	BELGIUM	2014	SRC 14.690 AR-54C
76	KASTAMONU BULGARIA AD	Gorno Sahrane	BULGARIA	2013	SRC 14.690 AR-54C
75	KASTAMONU BULGARIA AD	Gorno Sahrane	BULGARIA	2013	SRC 14.690 AR-54C
74	KRONOSPAN Bolderaja	Bolderaja	LATVIA	2013	SRC 14.690 AR-54C
73	KRONOSPAN GmbH	Sandebek	GERMANY	2013	SRC 14.690 AR-54C
72	KRONOSPAN GmbH	Sandebek	GERMANY	2013	SRC 14.690 AR-54C
71	UNILIN DIVISION PANELS - CHIPBOARDS	Wielsbeke	BELGIUM	2013	SRC 14.690 AR-54C
70	SUNGCHANG	Ulsan	KOREA	2013	SRC 14.690 AR-54C
69	SUNGCHANG	Ulsan	KOREA	2013	SRC 14.690 AR-54C
68	SANAYE KIMIA CHOOB GOLESTAN	Gorgan	IRAN	2012	SRC 1400-AR-54C
67	SANAYE KIMIA CHOOB GOLESTAN	Gorgan	IRAN	2012	SRC 1400-AR-54C
66	SADEPAN LATINOAMERICANA	Conception d. U.	ARGENTINA	2012	SRC 1400-AR-48C
65	SADEPAN LATINOAMERICANA	Conception d. U.	ARGENTINA	2012	SRC 1400-AR-48C
64	KRONOSPAN SEBES SA	Sebes	ROMANIA	2012	SRC 1400-AR-54C
63	KRONOSPAN SEBES SA	Sebes	ROMANIA	2012	SRC 1400-AR-54C
62	KRONOSPAN SEBES SA	Sebes	ROMANIA	2012	SRC 1400-AR-54C
61	IP ALIMOV	Novosibirsk	RUSSIA	2011	SRC 1400-AR-54C
60	IP ALIMOV	Novosibirsk	RUSSIA	2011	SRC 1400-AR-54C
59	IP ALIMOV	Novosibirsk	RUSSIA	2011	SRC 1400-AR-54C
58	KRONOSPAN SEBES SA	Sebes	ROMANIA	2011	SRC 1400-AR-48C
57	NOVOPAN DEL ECUADOR	Itulcachi	ECUADOR	2010	SRC 1400-AR-54C
56	NOVOPAN DEL ECUADOR	Itulcachi	ECUADOR	2010	SRC 1400-AR-54C
55	STAR PANEL BOARD	Malur	INDIA	2010	SRC 1400-AR-54C
54	STAR PANEL BOARD	Malur	INDIA	2010	SRC 1400-AR-54C
53	STAR PANEL BOARD	Malur	INDIA	2010	SRC 1400-AR-54C
52	STAR PANEL BOARD	Malur	INDIA	2010	SRC 1400-AR-54C
51	STAR PANEL BOARD	Malur	INDIA	2010	SRC 1400-AR-54C
50	STAR PANEL BOARD	Malur	INDIA	2010	SRC 1400-AR-54C
49	KS-ALMUS	Tashkent	UZBEKISTAN	2009	SRC 1400-AR-54C
48	KS-ALMUS	Tashkent	UZBEKISTAN	2009	SRC 1400-AR-54C
47	ALFAWOOD BULGARIA	Dolni Chiflick	BULGARIA	2008	SRC 1400-AR-54C
46	ALFAWOOD BULGARIA	Dolni Chiflick	BULGARIA	2008	SRC 1400-AR-54C
45	WILLIAM TELL	Johannesburg	SOUTH AFRICA	2008	SRC 1400-AR-54C
44	WILLIAM TELL	Johannesburg	SOUTH AFRICA	2008	SRC 1400-AR-54C
43	MODUL SYSTEME	Laufen	GERMANY	2008	RCG 1200-R
42	KUPELILER OTOMOTIV	Eskisehir	TURKEY	2007	RCG 1600-R/600
41	TEVERPAN	Cerkezkoy	TURKEY	2006	SRC 1400-AR-54C
40	PT. KUTAI TIMBER INDONESIA	Probolinggo	INDONESIA	2006	SRC 1400-AR-54C
39	PT. KUTAI TIMBER INDONESIA	Probolinggo	INDONESIA	2006	RCG 1200
38	PT. KUTAI TIMBER INDONESIA	Probolinggo	INDONESIA	2006	SRC 1400-AR-54C
37	DOK	Cherkassy	UCRAINA	2006	SRC 1400-AR-54C



TRUCIOLATORI CENTRIFUGHI
KNIFE RING FLAKERS

Pos.	Cliente	Località	Paese	Anno	Codice Globus
Item	Customer	Town	Country	Year	Globus code
36	K-SERVICE/SHIRDI INDUSTRIES	Mumbai	INDIA	2006	SRC 1400-AR-54C
35	SUNLIGHT WOOD PRODUCTS	Karachi	PAKISTAN	2006	SRC 1400-AR-54C
34	DOK	Cherkassy	UCRAINA	2006	RCG 1400-AR-54C
33	KLINKERT/SINO-PANEL	Hong Kong	HONG KONG	2005	RCG 1200-R
32	KLINKERT/SINO-PANEL	Hong Kong	HONG KONG	2005	RCG 1200-R
31	KLINKERT/SINO-PANEL	Hong Kong	HONG KONG	2005	RCG 1200-R
30	INVERNIZZI	Solarolo Rainerio	ITALY	2005	SRC 1400-AR-54C
29	SADEPAN LATINOAMERICANA	Conception d. U.	ARGENTINA	2003	SRC 1400-AR-54C
28	KLINKERT-EVERGREEN	Parit Raja	MALESIA	2002	RCG 1200-R
27	KLINKERT-EVERGREEN	Parit Raja	MALESIA	2002	RCG 1200-R
26	BALKAN EXPORT	Thessaloniki-Veria	GREECE	2002	SRC 1400-AR.54C
25	KLINKERT	Altheim	AUSTRIA	2001	RCG 1400
24	DEVREKTAS	Devrek	TURKEY	2000	RCG 1200-R/300
23	DEVREKTAS	Devrek	TURKEY	2000	RCG 1200-R/300
22	SADEPAN LATINOAMERICANA	Conception d. U.	ARGENTINA	2000	RCG 1400
21	SADEPAN LATINOAMERICANA	Conception d. U.	ARGENTINA	2000	RCG 1400
20	VERNEA	Vinovo	ITALY	1998	RCG 1400
19	PANDA	Villafranca	ITALY	1997	SRC 1400-AR
18	PANDA	Villafranca	ITALY	1996	SRC 1400-AR
17	LIMBA KAYU UTAMA	Jambi	INDONESIA	1995	RCG 1200-R/300
16	LIMBA KAYU UTAMA	Jambi	INDONESIA	1995	RCG 1200-R/300
15	VERNEA	Vinovo	ITALY	1994	RCG 1400
14	VERNEA	Vinovo	ITALY	1993	RCG 1400
13	VERNEA	Vinovo	ITALY	1993	RCG 1400
12	IPAS	Solarolo	ITALY	1992	RCG 1000
11	KLINKERT / DAIICHI	Nonhaburi / BKK	THAILAND	1991	RCG 1400
10	KLINKERT / DAIICHI	Nonhaburi / BKK	THAILAND	1991	RCG 1400
9	PANDA	Villafranca	ITALY	1991	SRC 1400-AR
8	PANDA	Villafranca	ITALY	1991	SRC 1400-AR
7	HELI ENGINEERING / CHIPBOARD	Umtata	SOUTH AFRICA	1990	RCG 1400
6	HELI ENGINEERING / CHIPBOARD	Umtata	SOUTH AFRICA	1990	RCG 1400
5	SILLA	Sustinente	ITALY	1990	RCG 1400
4	MADONNINA	Borgoforte	ITALY	1989	RCG 1400
3	MADONNINA	Borgoforte	ITALY	1989	RCG 1400
2	SIA	Viadana	ITALY	1988	RCG 1400
1	SACIC LEGNO	Mortara	ITALY	1988	RCG 1400



MULINI CENTRIFUGHI

DOUBLE STREAM MILLS

Pos.	Cliente	Località	Paese	Anno	Codice Globus
Item	Customer	Town	Country	Year	Globus code
88	YILDIZ ENTEGRE A.Ş.	Uzunbey, Kartepe - Kocaeli	TURKEY	2023	MSG 1500-760 EVO4
87	SAIB	Caorso	ITALY	2023	MSG 1500-760 EVO4
86	GREENLAM	Andhra Pradesh	INDIA	2022	MSG 1500-760-EVO4
85	GREENLAM	Andhra Pradesh	INDIA	2022	MSG 1500-760-EVO4
84	GALLOWAY GROUP (DINGYUAN)	Dingyuan, Anhui province	P.R.C.	2022	MSG 1500-760-EVO4
83	GALLOWAY GROUP (DINGYUAN)	Dingyuan, Anhui province	P.R.C.	2022	MSG 1500-760-EVO4
82	GALLOWAY GROUP (DINGYUAN)	Dingyuan, Anhui province	P.R.C.	2022	MSG 1500-760-EVO4
81	LAMINEX GROUP PTY LTD	Dardanup	AUSTRALIA	2022	MSG 1500-760-EVO4
80	BERNECK S.A.	Curitiba	BRAZIL	2022	MSG 1500-760-EVO4
79	BERNECK S.A.	Curitiba	BRAZIL	2022	MSG 1500-760-EVO4
78	TABLEROS HISPANOS	Lugo	SPAIN	2020	MSG 1500-760-EVO4
77	TABLEROS HISPANOS	Lugo	SPAIN	2020	MSG 1500-760-EVO4
76	CHENGDE SENXI WOOD INDUSTRY	Chengde city, Hebei province	P.R.C.	2020	MSG 1500-760-EVO4
75	INDUNOR S.A.	La Escondida - Chaco	ARGENTINA	2019	MSG 1500-760-EVO3
74	INDUNOR S.A.	La Escondida - Chaco	ARGENTINA	2019	MSG 1500-760-EVO3
73	WANHUA ECOBOARD	Beijing city, Beijing province	P.R.C.	2018	MSG 1500-760-EVO3
72	WANHUA ECOBOARD	Beijing city, Beijing province	P.R.C.	2018	MSG 1500-760-EVO3
71	WANHUA ECOBOARD	Beijing city, Beijing province	P.R.C.	2018	MSG 1500-760-EVO3
70	WANHUA ECOBOARD	Beijing city, Beijing province	P.R.C.	2018	MSG 1500-760-EVO3
69	WANHUA ECOBOARD (XINYANG)	Xinyang city, Henan province	P.R.C.	2018	MSG 1500-760-EVO3
68	WANHUA ECOBOARD (XINYANG)	Xinyang city, Henan province	P.R.C.	2018	MSG 1500-760-EVO3
67	UNIBOARD PARTICLEBOARD DIVISION	Val d'Or	CANADA	2018	MSG 1500-760-EVO3
66	UNIBOARD PARTICLEBOARD DIVISION	Val d'Or	CANADA	2018	MSG 1500-760-EVO3
65	KRONOSPAN LLC	Eastaboga, AL	U.S.A.	2018	MSG 1500-760-EVO3
64	KRONOSPAN LLC	Eastaboga, AL	U.S.A.	2018	MSG 1500-760-EVO3
63	KRONOSPAN LLC	Eastaboga, AL	U.S.A.	2018	MSG 1500-760-EVO3
62	NOVOPAN DEL ECUADOR	Itulcachi	ECUADOR	2017	MSG 1500-760
61	NOVOPAN DEL ECUADOR	Itulcachi	ECUADOR	2017	MSG 1500-760
60	SADEPAN LATINOAMERICANA S.A.	Concepción	ARGENTINA	2017	MSG 1500-760
59	BORG MANUFACTURING Pty Ltd.	Oberon	AUSTRALIA	2017	MSG 1500-760
58	BORG MANUFACTURING Pty Ltd.	Oberon	AUSTRALIA	2017	MSG 1500-760
57	ALLGREEN TIMBER PRODUCTS	Segamat Johor	MALAYSIA	2017	MSG 1500-760
56	WANHUA ECOBOARD (XINYANG)	Xinyang city, Henan province	P.R.C.	2017	MSG 1500-760
55	WANHUA ECOBOARD (XINYANG)	Xinyang city, Henan province	P.R.C.	2017	MSG 1500-760
54	SAIB	Caorso	ITALY	2017	MSG 1500-760
53	XIANGHE TIANYA WOOD IND.	Langang city, Hebei province	P.R.C.	2016	MSG 1500-760
52	FABRYKI MEBLI "FORTE" S.A.	Ostrow Mazowiecka	POLAND	2016	MSG 1500-760
51	PG BISON	Piet Retief	SOUTH AFRICA	2016	MSG 1500-760
50	SIT - Mauro Saviola Group	Mortara	ITALY	2016	MSG 1500-760
49	ALLGREEN TIMBER PRODUCTS	Segamat Johor	MALAYSIA	2015	MSG 1500-760
48	STAR PARTICLE BOARD	Narayanganj	BANGLADESH	2014	MCG 510
47	KRONOSPAN OSB	Strezelce Opolskie	POLAND	2014	MSG 1500-760
46	KRONOSPAN OSB	Strezelce Opolskie	POLAND	2014	MSG 1500-760
45	NOVOPAN DEL ECUADOR	Itulcachi	ECUADOR	2012	MSG 1500-760
44	EUCATEX	Salto	BRAZIL	2010	MCG 710
43	EUCATEX	Salto	BRAZIL	2010	MCG 710
42	STAR PANEL BOARD	Malur	INDIA	2010	MCG 760
41	STAR PANEL BOARD	Malur	INDIA	2010	MCG 760
40	STAR PANEL BOARD	Malur	INDIA	2010	MCG 760



MULINI CENTRIFUGHI
DOUBLE STREAM MILLS

Pos.	Cliente	Località	Paese	Anno	Codice Globus
Item	Customer	Town	Country	Year	Globus code
39	SAIB	Caorso	ITALY	2010	MCG 710
38	MODUL SYSTEME	Laufen	GERMANY	2009	MCG 760
37	STAR PANEL	Karnataka	INDIA	2009	MCG 720
36	STAR PANEL	Karnataka	INDIA	2009	MCG 720
35	STAR PANEL	Karnataka	INDIA	2009	MSG 1500-760
34	MODUL SYSTEME	Laufen	GERMANY	2008	MCG 760*
33	MODUL SYSTEME	Laufen	GERMANY	2008	MCG 760*
32	WILLIAM TELL	Johannesburg	SOUTH AFRICA	2008	MCG 640
31	K-SERVICE / PENZA	Novosybirsk	RUSSIA	2008	MCG 640
30	AGROHIMLES COMPANY	Pskov	RUSSIA	2007	MCG 610
29	NOVOPAN DEL ECUADOR	Quito	ECUADOR	2006	MCG 710
28	PT. KUTAI TIMBER INDONESIA	Probolinggo	INDONESIA	2006	MSG 1500-760
27	INDUSTRIA CALCE CASERTANA	Casagiove	ITALY	2006	MSG 1500-760
26	KLINKERT/SINO PANEL	Hong Kong	HONG KONG	2005	MCG 711
25	KLINKERT/SINO PANEL	Hong Kong	HONG KONG	2005	MCG 711
24	SAIB	Caorso	ITALY	2004	MCG 711
23	FALCO	Pomposa	ITALY	2003	MSG 1500-760
22	FALCO	Pomposa	ITALY	2003	MCG 760*
21	METSO / KRASNYY OKTJABR	Tyumen	RUSSIA	2003	MCG 760
20	P.G. BISON	Mpumalanga	SOUTH AFRICA	2003	MCG 640
19	SIT -Mauro Saviola Group	Mortara	ITALY	2002	MSG 590
18	TAFISA SONAE	White River	SOUTH AFRICA	2001	MCG 711
17	SAIB	Caorso	ITALY	2001	MCG 711
16	XILOPAN	Cigognola	ITALY	2001	MSG 720
15	XILOPAN	Cigognola	ITALY	2001	MSG 720
14	SILLA	Sustinente	ITALY	2000	MCG 720*
13	SILLA	Sustinente	ITALY	2000	MCG 720*
12	SILLA	Sustinente	ITALY	2000	MCG 720*
11	SADEPAN LATINOAMERICANA S.A.	Concepción	ARGENTINA	2000	MCG 760
10	SIT -Mauro Saviola Group	Mortara	ITALY	1999	MCG 720*
9	SIT -Mauro Saviola Group	Mortara	ITALY	1999	MCG 720*
8	SIT -Mauro Saviola Group	Mortara	ITALY	1999	MCG 720*
7	SAIB	Caorso	ITALY	1998	MCG 711
6	SAIB	Caorso	ITALY	1998	MCG 711
5	SACIC LEGNO	Mortara	ITALY	1997	MCG 760
4	MEDASPAN	Airuno	ITALY	1997	MCG 640*
3	VERNEA	Vinovo	ITALY	1996	MCG 640
2	HELI ENGINEERING / CHIPBOARD	Umtata	SOUTH AFRICA	1996	MCG 760
1	SIT	Mortara	ITALY	1995	MCG 720*



MULINI A MARTELLI
HAMMER MILLS

Pos.	Cliente	Località	Paese	Anno	Codice Globus
Item	Customer	Town	Country	Year	Globus code
33	CMP	Bondeno	ITALY	2012	SHM 07.10
32	CMP	Bondeno	ITALY	2012	SHM 07.10
31	CMP	Bondeno	ITALY	2012	SHM 07.10
30	CMP	Bondeno	ITALY	2012	SHM 07.10
29	CMP	Bondeno	ITALY	2012	SHM 07.10
28	CMP	Bondeno	ITALY	2012	SHM 07.10
27	SAIB	Caorso	ITALY	2008	MMG 12.16
26	EO2	Malakoff	FRANCE	2008	MMG 14.15*
25	PFLIEDERER	Grajevo	POLAND	2008	MMG 16.16
24	DRAMA	Nevrokopi	GREECE	2008	MMG 12.16
23	CIOP	Vicoforte	ITALY	2007	MMG 10.12
22	LATERAN	Vinkovci	UNGHERIA	2007	MMG 16.16
21	MODUL SYSTEME	Laufen	GERMANIA	2007	MMG 16.16
20	AGROHIMLES COMPANY	Pskov	RUSSIA	2007	MMG 16.16
19	FORNACI CALCE GRIGOLIN	Ponte della Priula	ITALY	2007	MMG 16.16
18	BRAGA	Casalmaggiore	ITALY	2006	MMG 10.10
17	AMICO DREVO	Oravsky Podzamok	SLOVACCHIA	2006	MMG 10.10
16	BRAGA	Casalmaggiore	ITALY	2006	MMG 10.10
15	BRAGA	Casalmaggiore	ITALY	2006	MMG 10.10
14	BRAGA	Casalmaggiore	ITALY	2005	MMG 10.10
13	SAIB	Caorso	ITALY	2005	MMG 12.16
12	CHRIS RANDLE	Melbourne	AUSTRALIA	2004	MMG 14.16*
11	KLINKERT	St. Peter Port	UK	2004	MMG 14.18
10	BRAGA	Casalmaggiore	ITALY	2004	MMG 10.10
9	RAFOS	Braila	ROMANIA	2004	MMG 10.10
8	SUNLIGHT WOOD PRODUCTS	Karachi	PAKISTAN	2001	MMG 12.14
7	VERPAN	Villafranca	ITALY	2000	MMG 16.16
6	VERPAN	Vinovo	ITALY	2000	MMG 16.16
5	KLINKERT	Waldkraiburg	GERMANY	1999	MMG 12.14
4	KLINKERT	Waldkraiburg	GERMANY	1999	MMG 12.14
3	KLINKERT	Waldkraiburg	GERMANY	1999	MMG 12.14
2	KLINKERT	Waldkraiburg	GERMANY	1998	MMG 10.12
1	KLINKERT	Waldkraiburg	GERMANY	1998	MMG 10.12



KNIFE SHARPENING SYSTEM - ASR
WASHING MACHINE - WMG

Pos.	Cliente	Località	Paese	Anno	Codice Globus
Item	Customer	Town	Country	Year	Globus code
9	BERNECK S.A.	Curitibanos	BRAZIL	2022	ASR 690
8	BERNECK S.A.	Curitibanos	BRAZIL	2022	WMG 690
7	IKEA INDUSTRY HULTSFREDAB	Hultsfred	SWEDEN	2020	WMG KL 14.585
6	KRONOSPAN LLC	Eastaboga, AL	U.S.A.	2018	ASR 690
5	KRONOSPAN LLC	Eastaboga, AL	U.S.A.	2018	WMG 690
4	BORG MANUFACTURING Pty Ltd.	Oberon	AUSTRALIA	2017	ASR 690
3	BORG MANUFACTURING Pty Ltd.	Oberon	AUSTRALIA	2017	WMG 690
2	FABRYKI MEBLI "FORTE" S.A.	Ostrow Mazowiecka	POLAND	2016	ASR 690
1	FABRYKI MEBLI "FORTE" S.A.	Ostrow Mazowiecka	POLAND	2016	WMG 690



AFFILATRICI
GRINDING MACHINES

Pos.	Cliente	Località	Paese	Anno	Codice Globus
Item	Customer	Town	Country	Year	Globus code
5	CITADEL INTL Trading LLC	Dubai Media City	DUBAI, UAE	2020	SMG 3600
4	KRONOSPAN LLC	Eastaboga, AL	U.S.A.	2018	SMG 6200
3	BORG MANUFACTURING Pty Ltd.	Oberon	AUSTRALIA	2017	SMG 3600
2	HEVEABOARD BERHAD	Gemas	MALAYSIA	2017	SMG 6200
1	WOODRIMBIO	Chungbuk	KOREA	2015	SMG 3600



CAM CLEANERS

Pos.	Cliente	Località	Paese	Anno	Codice Globus
Item	Customer	Town	Country	Year	Globus code
4	TABLEROS HISPANOS	Lugo	SPAIN	2021	CSC 12.33-7R
3	CITADEL INTL Trading LLC	Dubai Media City	DUBAI, UAE	2020	CSC 14.33-7R
2	FABRYKI MEBLI "FORTE" S.A.	Ostrow Mazowiecka	POLAND	2016	CSC 10.26-7R
1	ROQUETTE	Beinhim	FRANCE	2010	CSC 12.26-7R